

Wear Mei



Collection Première	4
Classique	20
Couture	46
Fashion Uniforms	82
Warm up & Activewear	114
Men & Boys	134
Shoes & Tights	164
Accessories	214
More Color Choice	224
Your Logo Your Way	226
Size Chart	228

Wear Mei
Collection PREMIÈRE



« Made by dancers,
for dancers »



Collection PREMIÈRE

Microfiber



CONCERTO



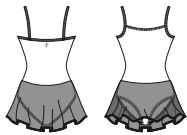
Children : 2/4 - 4/6 - 6/8 - 8/10 - 10/12 - 12/14
Ladies : XS - S - M - L - XL

This classic camisole leotard features a classic scoop neck in front and back, with a ballet cut legline. We offer this timeless silhouette in a vast array of colors. Simple, classic and refined: it is perfect as the basis of a uniform. Our microfiber offers optimum comfort: it is soft, breathable and durable and offers a superior fit.

Microfiber - Front lining



BAGATELLE



Children : 2/4 - 4/6 - 6/8 - 8/10 - 10/12 - 12/14
Ladies : XS - S - M - L - XL

This classic skirted leotard with a camisole top features a traditional scoop neck in front and back, with a ballet cut legline. The attached matching tulle skirt creates the perfect classical dance look. Our microfiber offers optimum comfort: it is soft, breathable and durable and offers a superior fit.

Microfiber - Stretch tulle - Front lining



CABRIOLE



Children : 2/4 - 4/6 - 6/8 - 8/10 - 10/12 - 12/14
Ladies : XS - S - M - L - XL

This classic tank leotard features a high scoop neck in front and back. We offer this timeless silhouette in a vast array of colors. Our microfiber offers optimum comfort: it is soft, breathable and durable and offers a superior fit.

Microfiber - Front lining



FANTASIE



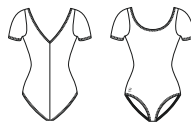
Children : 2/4 - 4/6 - 6/8 - 8/10 - 10/12 - 12/14

This classic skirted leotard with a long-sleeved top features a traditional scoop neck in front and back, with a ballet cut legline. The attached matching tulle skirt creates the perfect classical dance look for little girls! The skirt length is medium. Our microfiber offers optimum comfort: it is soft, breathable and durable and offers a superior fit.

Microfiber - Stretch tulle - Front lining



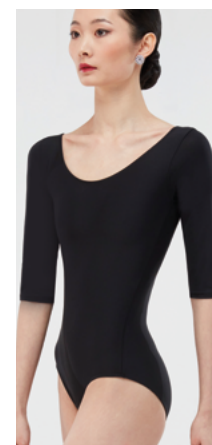
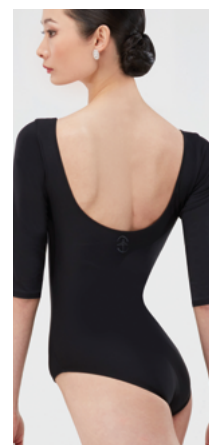
PIROUETTE



Children : 2/4 - 4/6 - 6/8 - 8/10 - 10/12 - 12/14
Ladies : XS - S - M - L - XL

This classic short-sleeved leotard features a classic scoop neck in front and back, with a ballet cut legline. The comfortable short sleeves provide coverage while the legline allows for a versatile aesthetic. Our microfiber offers optimum comfort: it is soft, breathable and durable and offers a superior fit.

Microfiber - Front lining



ARABESQUE



Children : 2/4 - 4/6 - 6/8 - 8/10 - 10/12 - 12/14
Ladies : XS - S - M - L - XL

This classic 3/4 length-sleeved leotard is designed with a round neckline and a ballet cut legline. It's a timeless piece that creates a classic ballet style silhouette. Our microfiber offers optimum comfort: it is soft, breathable and durable and offers a superior fit.

Microfiber - Front lining



Collection PREMIÈRE

Cotton



PRELUDE 

Children : 2/4 - 4/6 - 6/8 - 8/10 - 10/12 - 12/14
Ladies : XS - S - M - L - XL

This classic camisole leotard features a traditional scoop neckline and a ballet cut legline. It has smooth, discreet double-stitched seams to ensure long-lasting wear. The combination of cotton and elastane makes for an extremely comfortable fabric that is soft, durable and fits perfectly.

Cotton - Elastane - Front lining

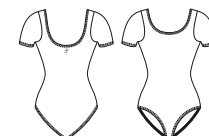


OPERA 

Children : 2/4 - 4/6 - 6/8 - 8/10 - 10/12 - 12/14
Ladies : XS - S - M - L - XL

This classic short-sleeved leotard features a traditional scoop neck shape in front and back, with a ballet cut legline. This is a great-looking basic silhouette for studio work. The combination of cotton and elastane makes for an extremely comfortable fabric that is soft, durable and fits perfectly.

Cotton - Elastane - Front lining



SARABANDE 

Children : 2/4 - 4/6 - 6/8 - 8/10 - 10/12 - 12/14
Ladies : XS - S - M - L - XL

**** Only available in child sizes**

This classic long-sleeved leotard features a scoop neckline, a traditional, modest back, with a ballet cut legline. The long sleeves provide protection and coverage on cold days in the studio. The combination of cotton and elastane makes for an extremely comfortable fabric that is soft, durable and fits perfectly.

Cotton - Elastane - Front lining

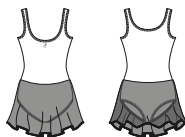




ENTRECHÂT

Children : 2/4 - 4/6 - 6/8 - 8/10 - 10/12 - 12/14

This classic skirted leotard with a tank top features a modestly scooped neckline and a ballet cut legline. The attached matching tulle skirt creates the perfect classical dance look for little girls! The skirt length is medium. The combination of cotton and elastane makes for an extremely comfortable fabric that is soft, durable and fits perfectly.



Cotton - Elastane - Stretch tulle - Front lining



ADAGE

Children : 2/4 - 4/6 - 6/8 - 8/10 - 10/12 - 12/14

This classic skirted leotard with a short-sleeved top features a scoop neck in front and back, with a ballet cut legline. The attached matching tulle skirt creates the perfect classical dance look for little girls! The skirt length is medium. The combination of cotton and elastane makes for an extremely comfortable fabric that is soft, durable and fits perfectly.



Cotton - Elastane - Stretch tulle - Front lining



ETUDE

Children : 2/4 - 4/6 - 6/8 - 8/10 - 10/12 - 12/14
Ladies : XS - S - M - L - XL

This classic tank leotard features a scoop neck in the front and a modest scoop in back, with a ballet cut legline. It has smooth, discreet double-stitched seams to ensure long-lasting wear. The combination of cotton and elastane makes for an extremely comfortable fabric that is soft, durable and fits perfectly.



Cotton - Elastane - Front lining





PAVANE

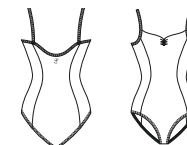
Ladies : XS - S - M - L - XL

This classic camisole leotard features a pinched sweetheart neckline with three flattering princess seams on the sides and a moderate legline. It has smooth, discreet double-stitched seams to ensure long-lasting wear. The combination of cotton and elastane makes for an extremely comfortable fabric that is soft, durable and fits perfectly.

Cotton - Elastane - Front lining



NAVY BLACK



GLISSADE

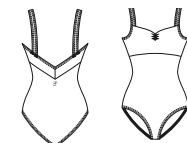
Ladies : XS - S - M - L - XL

This classic leotard with wide straps features a sweetheart neckline with a pinched front, princess seams in front, a beautiful empire waist tank-style cut and a moderate legline. This style offers great support and expertly highlights the dancer's silhouette, with the gorgeous V-cut in the back.

Cotton - Elastane - Front lining



NAVY BLACK



REVERENCE

Ladies : XS - S - M - L - XL

This classic short-sleeved leotard features a gorgeous square cut neckline, flattering princess seams in front and back, with a moderate legline. It has smooth, discreet double-stitched seams to ensure long-lasting wear. The combination of cotton and elastane makes for an extremely comfortable fabric that is soft, durable and fits perfectly.

Cotton - Elastane - Front lining



NAVY BLACK



Collection PREMIÈRE

Knitwear



MENUET

Children : 4/6 - 6/8 - 8/10 - 10/12
Ladies : XS - S - M - L - XL

This classic knitted full-sleeved wrap-around top secures with adjustable self-ties for a snug fit. This is a must-have piece in the studio: layer the wrap-around top over your favorite leotard before you warm up. Our soft knitted fabric delivers maximum comfort and a perfect fit.

Knitted acrylic elastane



SONATE

Children : 4/6 - 6/8 - 8/10 - 10/12
Ladies : XS - S - M - L - XL

* Only available in adult sizes

** Only available in child sizes

These soft and cozy shorts fit snugly with a ribbed, fold-over waistband. They add warmth and texture to your rehearsal outfits. This piece is specially designed to retain its elasticity over time! Our soft knitted fabric delivers maximum comfort and a perfect fit.

Knitted acrylic elastane



ATTITUDE

Children : 4/8 - 8/12
Ladies : XS/S - M/L

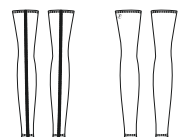
* Only available in adult sizes

** Only available in child sizes

At the barre or in the air, your legs will be cozy in these classic leg warmers. The soft elastic cuff around the thighs helps keep them in place, even during your most intense rehearsals. Our soft knitted fabric delivers maximum comfort and a perfect fit.

Attitude child: 12'' - 30 cm
Attitude adult: 18'' - 45 cm

Knitted acrylic elastane





PREMIERE FOOTED TIGHTS - DIM24

Children : 4/8 - 8/12 - 12/14
Ladies : S/M - L/XL

Dance to your heart's content in our Premiere footed tights! This must-have features a soft, comfortable microfiber waistband. Super-stretchy, our semi-opaque ballet tights' construction offers unrivaled fit and performance. It holds shapes and washes well without shrinking or fading. Perfect for class, rehearsal, and performance.

Microfiber - 50 denier



WHITE LIGHT PINK



PREMIERE CONVERTIBLE TIGHTS - DIM23

Children : 12/14
Ladies : S/M - L/XL

Dance to your heart's content in our Premiere convertible tights! This must-have features a soft comfortable microfiber waistband. Super-stretchy, the construction of our semi-opaque ballet tights offers unrivaled fit and performance. A bottom opening at the foot allows you to transition easily from footed tights to footless tights, for quick and easy changes. It holds shapes and washes well, without shrinking or fading. Perfect for class, rehearsal, and performance.

Microfiber - 50 denier



LIGHT PINK DARK PINK WALNUT



Collection PREMIÈRE Tights



Wear **Mai**
Designed in France
CLASSIQUE

« Made by dancers,
for dancers »

Collection CLASSIQUE

Leotards



ABBIE



Children : 4/6 - 6/8 - 8/10 - 10/12 - 12/14
Ladies : XS - S - M - L - XL ** - XXL** - XXXL***
* Not available in sizes 4/6 and 6/8
** Available in Black, Navy and Burgundy only
*** Available in Black, Navy and Burgundy only

Basic, simple and elegant camisole leotard with a mid-back profile and front pinch. Available in 25 colors.

Microfiber- Front lining

WHITE	PEACH	PINK	LILAC	PACIFIC	MINT	SKY	LIGHT GREY
DARK GREY *	ROSE	RED	FUSHIA	FRENCH BLUE	PURPLE	FOREST GREEN	BURGUNDY *
PRUNE *	ROYAL BLUE	NAVY	BLACK	CORAL	AZUR BLUE	MIMOSA	EMERALD
MOKA							



THALIA



Children : 4/6 - 6/8 - 8/10 - 10/12 - 12/14
Ladies : XS - S - M - L
* Not available in sizes 4/6 and 6/8

Basic camisole leotard with a V-back and back seam. Available in 16 colors.

Microfiber- Front lining

WHITE	PEACH	PINK	LILAC	PACIFIC	MINT	SKY	LIGHT GREY
ROSE	RED	FUSHIA	FRENCH BLUE	BURGUNDY *	ROYAL BLUE	NAVY *	BLACK *



GALATE

Children : 4/6 - 6/8 - 8/10 - 10/12 - 12/14
Ladies : XS - S - M - L

* Not available in sizes 4/6 and 6/8



Elegant pinch front tank leotard with under bust detail made with soft microfiber.
Microfiber- Front lining



EMERAUDE

Children : 4/6 - 6/8 - 8/10 - 10/12 - 12/14
Ladies : XS - S - M - L

* Not available in sizes 4/6 and 6/8



Basic square front tank style leotard. Available in 16 colors.
Microfiber- Front lining





FAUSTINE

Children : 4/6 - 6/8 - 8/10 - 10/12 - 12/14
 Ladies : XS - S - M - L - XL** - XXL** - XXXL***
 * Not available in sizes 4/6 and 6/8
 ** Available in Black, Navy and Burgundy only
 *** Available in Black, Navy and Burgundy only

Microfiber basic tank leotard with front
 pinch. U-cut back. Available in 25 colors.
 Microfiber- Front lining

WHITE	PEACH	PINK	LILAC	PACIFIC	MINT	SKY
LIGHT GREY	DARK GREY	ROSE	RED	FUSHIA	FRENCH BLUE	PURPLE
FOREST GREEN	BURGUNDY	PRUNE	ROYAL BLUE	NAVY	BLACK	CORAL
AZUR BLUE	MIMOSA	EMERALD	MOKA			





CANDIDE



Children : 2/4 - 4/6 - 6/8 - 8/10 - 10/12 - 12/14

Ladies : XS - S - M - L - XL** - XXL**

* Not available in sizes 2/4, 4/6 and 6/8

** Available in Black, Navy and Burgundy only

Classic short sleeve leotard with gathered scoop neckline and scoop back.
Microfiber - Front lining



LOVINA



Children : 8/10 - 10/12 - 12/14

Ladies : XS - S - M - L - XL** - XXL**

** Available in Black, Navy, and Burgundy only

Classic long sleeve leotard with gathered scoop neckline and scoop back.
Microfiber - Front lining



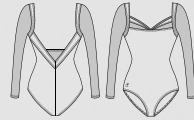
CANDIDE



LAVANDE

Ladies : XS - S - M - L - XL - XXL

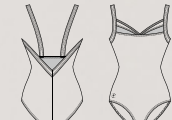
Long-sleeved microfiber leotard detailed with sheer stretch tulle, beautifully revealing parts of the arms, upper neckline, and middle-back. Deep open back. Microfiber - Stretch Tulle - Front lining



CYPRES

Children : 8/10 - 10/12 - 12/14
Ladies : XS - S - M - L

Microfiber camisole leotard detailed with sheer stretch tulle, revealing skin on the upper neckline and middle back through a small triangle cut-out. Deep open back. Microfiber- Stretch Tulle- Front lining





ANGELIQUE

Children : 8/10 - 10/12 - 12/14

Ladies : XS - S - M - L

** Available in adult size only*



This camisole leotard strikes the perfect balance between simplicity and originality. The unadorned front is made in a solid color with a classic pinch. Meanwhile, the original back design features interlacing straps to ensure great hold. It's made from elastane microfiber for optimal comfort.

Microfiber - Front lining



MELISSE

Children : 8/10 - 10/12 - 12/14

Ladies : XS - S - M - L

** Available in adult size only*



This ballet leotard has camisole straps and a classic pinch in the middle of the neckline. This design plays up the contrast between a classic leotard in front and a sportier look at back. The back is adorned with a band of transparent tulle held in place by interlacing straps to give this women's leotard a sporty appeal. This product is made from elastane microfiber and solid colored transparent stretch tulle.

Microfiber- Stretch Tulle - Front lining

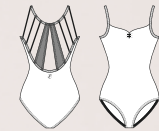


GENTIANE

Ladies : XS - S - M - L

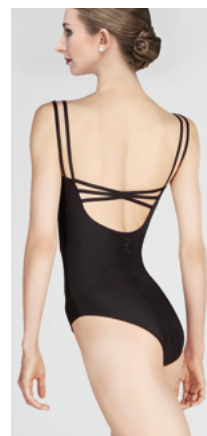
This leotard owes its elegance to the blend of a demure front with an original back. This camisole leotard has a pretty pinch feature in front. Meanwhile, the plunging back is decorated with several thin straps and tulle panels running along its length. This product is crafted in elastane microfiber and transparent stretch tulle to give you a greater range of movement.

Microfiber- Stretch Tulle- Front lining





MARIE



MAUVE



Children : 8/10 - 10/12 - 12/14

Ladies : XS - S - M - L

* Available in adult size only

A new take on uniforms, Mauve features fashion straps on the back, and all business on the front. The best of two worlds combined in this basic/fashion piece. Pinched front, strappy back.

Microfiber- Front lining



WHITE



BURGUNDY



NAVY



BLACK



MARIE



Ladies : XS - S - M - L

A beautiful timeless look created by this basic/fashion leotard. Fun crisscross straps on the back with medium U-drop back. Pinched front.

Microfiber- Front lining



BURGUNDY



NAVY



BLACK



CAPRICE



Children : 8/10 - 10/12 - 12/14

Ladies : XS - S - M - L

* Available in adult size only

Camisole strapped leotard with a clean front and a mesh back featuring thin straps plated on it.

Microfiber- Stretch Tulle- Front lining



WHITE



BURGUNDY



BLACK

Collection CLASSIQUE

Dresses & Skirts

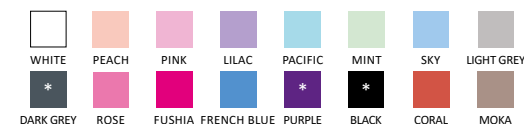


BALLERINE

Children : 4/6 - 6/8 - 8/10 - 10/12 - 12/14
Ladies : XS - S - M - L
* Not available in sizes 4/6 and 6/8



Microfiber basic, simple and elegant camisole dress, with a mid-back profile, front pinch and attached four-way stretch tulle skirt. Available in 20 colors.
Microfiber- Stretch Tulle- Front lining



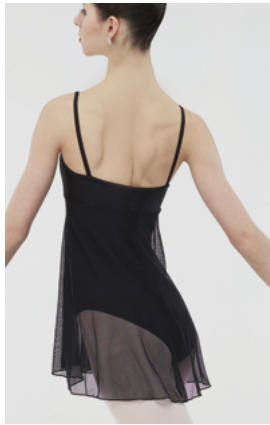
BALKALA

Children : 4/6 - 6/8 - 8/10 - 10/12 - 12/14
Ladies : XS - S - M - L
* Not available in sizes 4/6 and 6/8



Microfiber basic tank dress with front pinch. U-cut back and attached four-way stretch tulle skirt. Available in 16 colors.
Microfiber- Stretch Tulle- Front lining





AZUREA



Children : 6/8 - 8/10 - 10/12 - 12/14
Ladies : XS - S - M - L

This thin-strapped camisole dress, with empire mesh tulle overlay is perfect for the studio and will look absolutely dazzling on stage.
Microfiber- Stretch Tulle- Front lining



DOLLY

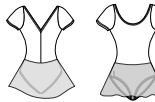


Children : 4/8 - 8/12
Ladies : XS/S - M/L

This classic length faux wrap skirt is made from four-way stretch mesh with exclusive Wear Moi hem.
Stretch Tulle



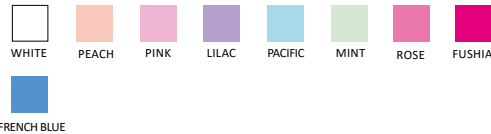
ARDESIA



Children : 4/6 - 6/8 - 8/10 - 10/12 - 12/14
Ladies : XS - S - M - L

** Not available in sizes 4/6 and 6/8*

Short sleeve microfiber basic dress, featuring a modest, high back-cut and an attached four-way stretch tulle skirt. Available in 11 colors
Microfiber- Stretch Tulle- Front lining



DELIA



Children : 4/8 - 8/12
Ladies : XS/S - M/L

A longer style faux wrap skirt. Beautiful four-way stretch mesh and signature Wear Moi hem.
Stretch Tulle



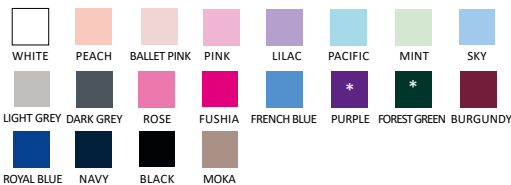
DAPHNE



Children : 4/8 - 8/12
Ladies : XS/S - M/L

** Not available in sizes 4/8*

Sheer four-way stretch tulle pull on skirt features a color-matched elastic waistband. Length of the skirt depends on size.
Stretch Tulle



ALEGRO



Children : 4/8 - 8/12
Ladies : XS/S - M/L - XL/XXL**

*** Available in Black only*

Sheer four-way stretch tulle wrap skirt, featuring a stretch waistband and beautiful hem. Ideal for uniforms.
Stretch Tulle





APOLO

Ladies : XS/S - M/L

A long wrap skirt for ladies, constructed of beautiful four-way stretch mesh and a flexible waist band. Perfect for adults and teachers. Stretch Tulle



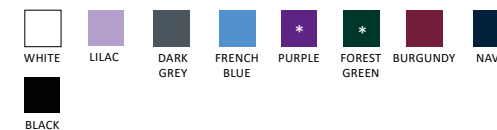
MAGDA

Children : 4/8 - 8/12

Ladies : XS/S - M/L

* Not available in sizes 4/8

A 6cm addition to our most popular skirt, Daphne, makes this four-way stretch mesh pull on skirt a must have. Stretch Tulle



FADO

Children : 8/10 - 10/12

Ladies : XS/S - M/L

Below the knee character skirt. Soft microfiber full circle skirt with an elastic waistband. Microfiber



MELINA

Children : 8/12

Ladies : XS/S - M/L - XL/XXL

This long skirt falls just below the knees, making it the perfect addition to your rehearsal outfit. It is made from transparent stretch tulle and features an elastic waistband in solid-color microfiber. This generous skirt moves elegantly and smoothly for gorgeous lines.

Stretch Tulle- Microfiber





SHORT AND UNDIES



GIPSY 



Children : 4/6 - 6/8 - 8/10 - 10/12

Ladies : XS - S - M - L - XL** - XXL**

* Not available in sizes 4/6 and 6/8

** Available in black only

Gipsy short features soft microfiber elastane fabric and a comfortable elastic waistband. Microfiber



WHITE



LILAC



PACIFIC



RED



FUSHIA



BURGUNDY



ROYAL
BLUE



BLACK



MACARON 



Children : 6/8 - 8/10 - 10/12

Ladies : XS - S - M - L

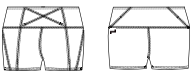
These hotpant shorts provide a flattering silhouette in the studio or on stage. Microfiber



BLACK



ARIELLE 



Children : 6/8 - 8/10 - 10/12

Ladies : XS - S - M - L

Booty shorts that fit at the natural waistline. Perfect for any dance style. Microfiber



BLACK



AZTEC

Children : 8/10 - 10/12
Ladies : XS - S - M - L

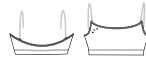
Un-lined camisole undergarment, designed to provide additional coverage and support. Equipped with clear, detachable straps. Cotton-lined gusset. Soft Microfiber



ALIAS

Children : 8/10 - 10/12
Ladies : XS - S - M - L

Nude pull-on athletic bra, with detachable clear straps. Soft Microfiber



ADELA

Children : 8/10 - 10/12 - 12/14
Ladies : XS - S - M - L

Comfortable high-waisted brief with soft elastic at the waist and elastic finishes on the thighs. Cotton-lined gusset. Soft Microfiber



AKIRA

Ladies : XS - S - M - L

Dance bra, featuring stretch mesh detail, and clear convertible straps. Soft Microfiber - Stretch Tulle



ANDESITE

Children : 8/10 - 10/12
Ladies : XS - S - M - L

Basic microfiber short undergarment, offering a gusset for maximum flexibility. Soft Microfiber



AELIS

Ladies : XS - S - M - L

Comfortable thong for dancers, thin four-way stretch mesh and soft microfiber help this undergarment disappear under any leotard or costume piece. Cotton-lined gusset. Soft Microfiber - Stretch Tulle



DIV117

Children : 4/6 - 6/8 - 8/10 - 10/12 - 12/14

Ladies : XS/S - M/L

Accentuate your waistline with our stretchy microfiber belt! With 28 colors to choose from, you are sure to find the right belt to match your favorite dance outfit. It's the perfect accessory to showcase your silhouette with style. Microfiber.





« Made by dancers,
for dancers »

Wear Mei
COUTURE
Designed in France

Collection Damasco

*Each leotard tells you a story from afar, where
every dance step transports you to distant lands.*





BELLE - MELINA

BELLE



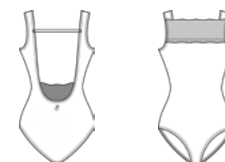
NEW



Ladies : XS - S - M - L

Our exquisite BELLE tank leotard features a captivating design: it combines geometric strap detailing on the back with delicate embroidered tulle, resulting in a truly unique and bold aesthetic. This two-fabric leotard has a boat neckline, accentuated by a wide scalloped edge of embroidered tulle. Its deep backline, highlighted by embroidery, enhances the dancer's back arch. Each motif and thread color combination is thoughtfully chosen to enhance the overall design. BELLE is available in a selection of five rich tones.

Microfiber - Embroidered Stretch Tulle - Front lining



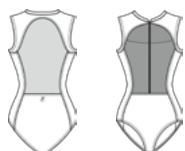
MEGARA



Ladies : XS - S - M - L

Our exquisite MEGARA cap-sleeved leotard combines delicacy and originality, thanks to its mock neck emphasized by a zipper. The front consists of a bustier and princess seams, enhanced by embroidered tulle on top, while transparently revealing the upper bust. This gracefully crafted and haute couture leotard is elevated by its whimsical transparent cutouts on the back. Each motif and thread color combination is thoughtfully chosen to enhance the overall design. Ideal for both training and performance. MEGARA is available in a selection of three rich tones.

Microfiber- Embroidered Stretch Tulle- Front lining



ROYAL BLUE BURGUNDY BLACK



MEGARA

NEW

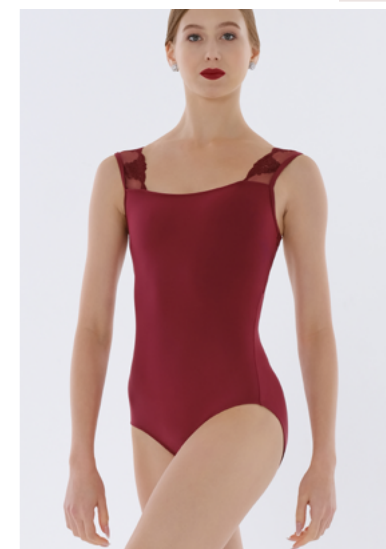
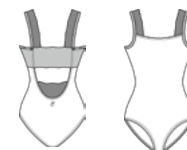


AMINA

Ladies : XS - S - M - L

Between beauty and support, experience the versatility of our beautiful AMINA wide straps leotard! This two-fabric leotard features a modest neckline in the front, as well as a deep V-neck in the back. It is adorned with tone-on-tone embroidered tulle inserts, which give a very couture look to this leotard. Each motif and thread color combination is thoughtfully chosen to enhance the overall design. Ideal for both training and performance. AMINA is available in a selection of five rich tones.

Microfiber- Embroidered Stretch Tulle- Front lining



Damasco



AMINA - DAPHNE



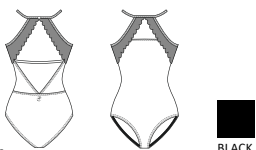
Collection Sublime



AEGLOS

Ladies : XS - S - M - L

This ballet leotard is made from microfiber and stretch tulle. Its halter-top style has a thin strip around the neck to suggest a dainty necklace. The leotard has a button closure at the neck in the back. The top of the bust is adorned with embroidered stretch tulle to suggest the wings of the black swan in «Swan Lake». The geometric back has two triangles separated by a horizontal strap that joins the two sides. Part geometric, part bird, this style hugs your figure like a second skin molded to your body while allowing you total freedom of movement. Microfiber- Embroidered Stretch Tulle- Front lining



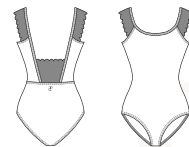


PEYA

Ladies : XS - S - M - L

This leotard in elastane microfiber and embroidered stretch tulle boasts a unique design. It has transparent tulle sleeves that call to mind the wings of the black swan in «Swan Lake». The deep backline is accentuated with a tulle trapezoid panel featuring scalloped edges. This women's leotard will fit you like a second skin so you can dance to your heart's content. Whether «Swan Lake» is your favorite ballet or not, this ballet leotard will become your favorite dance outfit!

Microfiber- Embroidered Stretch Tulle- Front lining



Sublime

Collection Ecrin Bleu



JASMIN



Ladies : XS - S - M - L

This camisole leotard has two embroidered tulle panels decorated with sea flowers. One panel is on the back and the other above the sweetheart neckline to play up the fabric's transparency. Two additional stretch tulle panels are placed on the sides in the back and supported by a thin horizontal strap that complements the waistline in the rear. This leotard, cut from our elastane microfiber and paired with embroidered stretch tulle that sits transparently over the skin, is the pinnacle of grace. The front in microfiber to ensure optimal comfort.

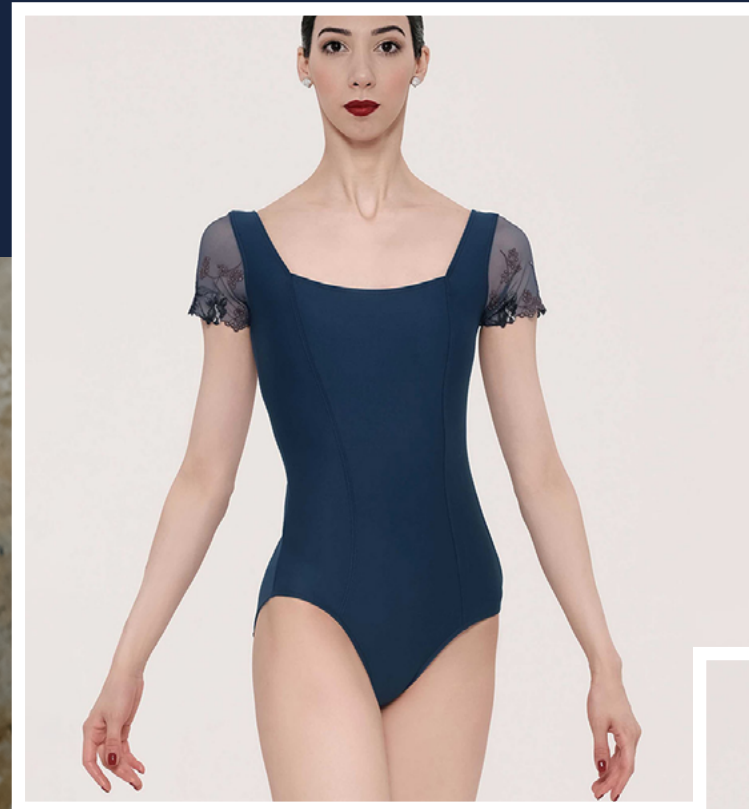
Microfiber- Embroidered Stretch Tulle- Stretch Tulle- Front lining



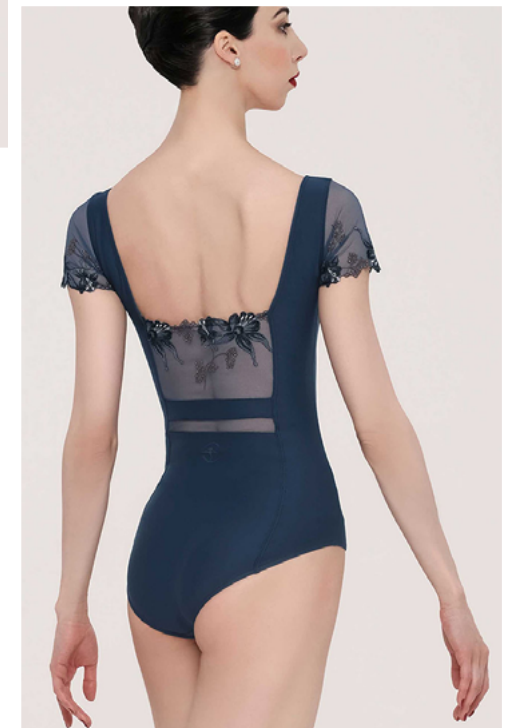
NAVY
NIGHTBLUE



JASMIN



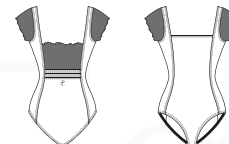
LISERON



Ladies : XS - S - M - L

This short-sleeved leotard is made from elastane microfiber and embroidered stretch tulle to reveal glimpses of skin. The embroidered tulle placed in the back and on the shoulders in the form of cap sleeves plays up the transparency of the fabric. The waist is also accentuated with a small band of transparent stretch tulle. These materials combine with the leotard's square neckline in front and back to showcase the dancer's body. This structured, contemporary style fuses lingerie, sea flowers and sport to convey grace, elegance, stability and freedom of movement for a long and lean silhouette. Bonus feature: The vertical sculpt elongate your silhouette!

Microfiber - Embroidered Stretch Tulle - Stretch Tulle- Front lining



NAVY
NIGHTBLUE

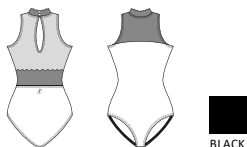
AKARSO



Ladies : XS - S - M - L

Ballet leotard with halter top and a dainty stand-up collar with scalloped edges. The neck closes with two small buttons in the back. The back is made from three different fabrics, one of which is fully transparent with a teardrop opening so you can easily slip on the leotard. The waist is also accentuated with the same embroidered tulle as the bust and the collar. This style is made from elastane microfiber, embroidered stretch tulle and transparent stretch tulle. This leotard is even more comfortable than it is refined.

Microfiber- Embroidered Stretch Tulle-
Stretch Tulle- Front lining



Collection Ruban



AKARSO

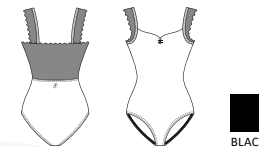


SWEETPEA

Ladies : XS - S - M - L

This leotard is cut from elastane microfiber paired with embroidered stretch tulle. It has wide straps and a decorative tulle back to show off your shoulders and back. The edges feature a scallop finish. This ballet leotard has a pinch in the bustline. The haute couture look brings grace and support without sacrificing your comfort when you wear it.

Microfiber- Embroidered Stretch Tulle- Front lining



*Opt for refined
arabesques*

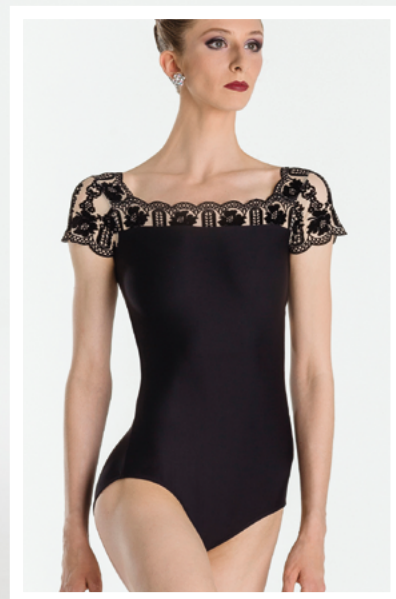
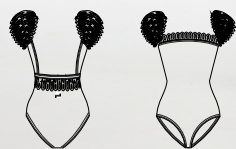




EMMA

Ladies : XS - S - M - L

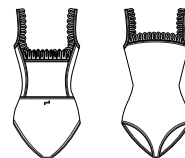
Chic, elegant and stylish. This gorgeous cap sleeve leotard features flocked light beige mesh in a truly unique pattern. Open square mid-back with lace like panel on lower back. This piece is sure to catch your eye. Wear Moi classic ballet leg cut. Microfiber - Flocked Stretch Tulle - Front lining



ARLETTY

Ladies : XS - S - M - L

This tank style fashion leotard shows off the chic detail of the lace-like flocked mesh. Beautiful detail on the back provides extra support and helps to hide a nude support bra if needed. Open lower back creates an unforgettable look on this one of a kind piece. Microfiber - Flocked Stretch Tulle - Front lining



*On-trend pieces in oriental floral
patterns invite you on a journey*



FELICITE

Ladies : XS - S - M - L

Fancy high-neck long-sleeved leotard with front zipper. Sheer back, sleeves, and shoulders reveal the skin and contour the body with large flowers, like a tattoo.

Microfiber - Flocked Stretch Tulle
- Front lining



BLACK

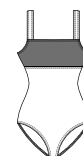
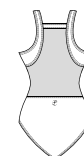


FELICITE



Ladies : XS - S - M - L

Fancy wide strap leotard cut-out along the bust, detailed with rose pattern flocked tulle front yoke. The back of the leotard is made of sheer stretch tulle, attached by solid color microfiber bands.
Microfiber- Flocked Stretch Tulle- Front lining



BLACK

LAIKA





« Made by dancers,
for dancers »

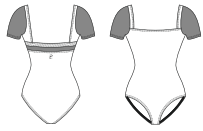
Wear Mei
Designed in France
FASHION UNIFORMS

ACANTE

Children : 4/6 - 6/8 - 8/10 - 10/12 - 12/14
Ladies : XS - S - M - L

This short-sleeved leotard has a straight neckline in front and in back. It is cut from extra-soft microfiber featuring a whimsical floral print and transparent stretch tulle. The tulle adorns the sleeves and a thin border in the back. This ballet leotard creates a curved silhouette.

Printed Microfiber - Stretch Tulle - Front lining



COLCHIC

Children : 4/6 - 6/8 - 8/10 - 10/12 - 12/14
Ladies : XS - S - M - L

This ballet leotard in extra-soft microfiber will be a valuable addition to your wardrobe. The leotard features a floral print and a classic cut in the front with a band of transparent stretch tulle along the top on the back side. The camisole style and cut will shape your silhouette.

Printed Microfiber - Stretch Tulle- Front lining





Eclat

CAMELIA

Children : 4/6 - 6/8 - 8/10 - 10/12 - 12/14
Ladies : XS - S - M - L

This printed microfiber style delivers a comfortable fit and a shapely silhouette. The transparent stretch tulle panel along the backline and the camisole straps lend the style even more elegance. The Camelia skirted leotard will be a hit in your dance class and its floral pattern will remind you of a lush garden of anemones.

Printed Microfiber- Stretch Tulle- Front lining

PINK

LILAC

PACIFIC

LIGHT GREY

BLACK

de Fleurs

FRESIA

Ladies : XS - S - M - L

Fresia is a long-sleeved leotard with a wide neckline in front and at the back. Its printed microfiber delicately evokes a magnificent anemone garden. You will cut an elegant silhouette without sacrificing comfort, even when you train in cold temperatures. The backline and the sleeves of this leotard are made of transparent stretch tulle to highlight every last detail of your movements. Printed Microfiber - Stretch Tulle - Front lining



LONICERA

Ladies : XS/S - M/L

Lonicera is a microfiber skirt with a floral pattern. It will inject some whimsy into your dance ensemble! It is medium length, but longer at the back than in front. The skirt has finished edges at the waist and a pretty little bow in the middle of the waistband at the back. This pull-on skirt is soft and comfortable. Printed Microfiber





CIRNUM

Children : 6/8 - 8/10 - 10/12 - 12/14

Ladies : XS - S - M - L

This floral patterned leotard is very graceful. The tulle-covered microfiber panel over the breast creates an empire cut with several pinches for a delicate effect. The panel creates effective support for the bust. This camisole leotard is made from our elastane microfiber and embroidered stretch tulle. The back features tulle all the way to the waistline to reveal your skin.

Bonus feature: Our empire cut gives your bust reliable support!
Microfiber- Embroidered Stretch Tulle- Front lining





LOBELIA

Children : 4/8 - 8/12

Ladies : XS/S - M/L

This short ballet skirt in stretch tulle features embroidered floral motifs and a fully elasticized waistband. It perfectly complements the leotards in the line, but would also contrast beautifully with a solid leotard in the same color as the embroidery.

Bonus feature: Save precious time with this pull-on skirt!

Embroidered Stretch Tulle



MIOSOTIS

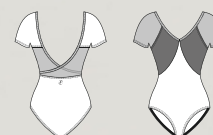
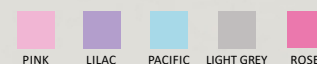
Children : 6/8 - 8/10 - 10/12 - 12/14

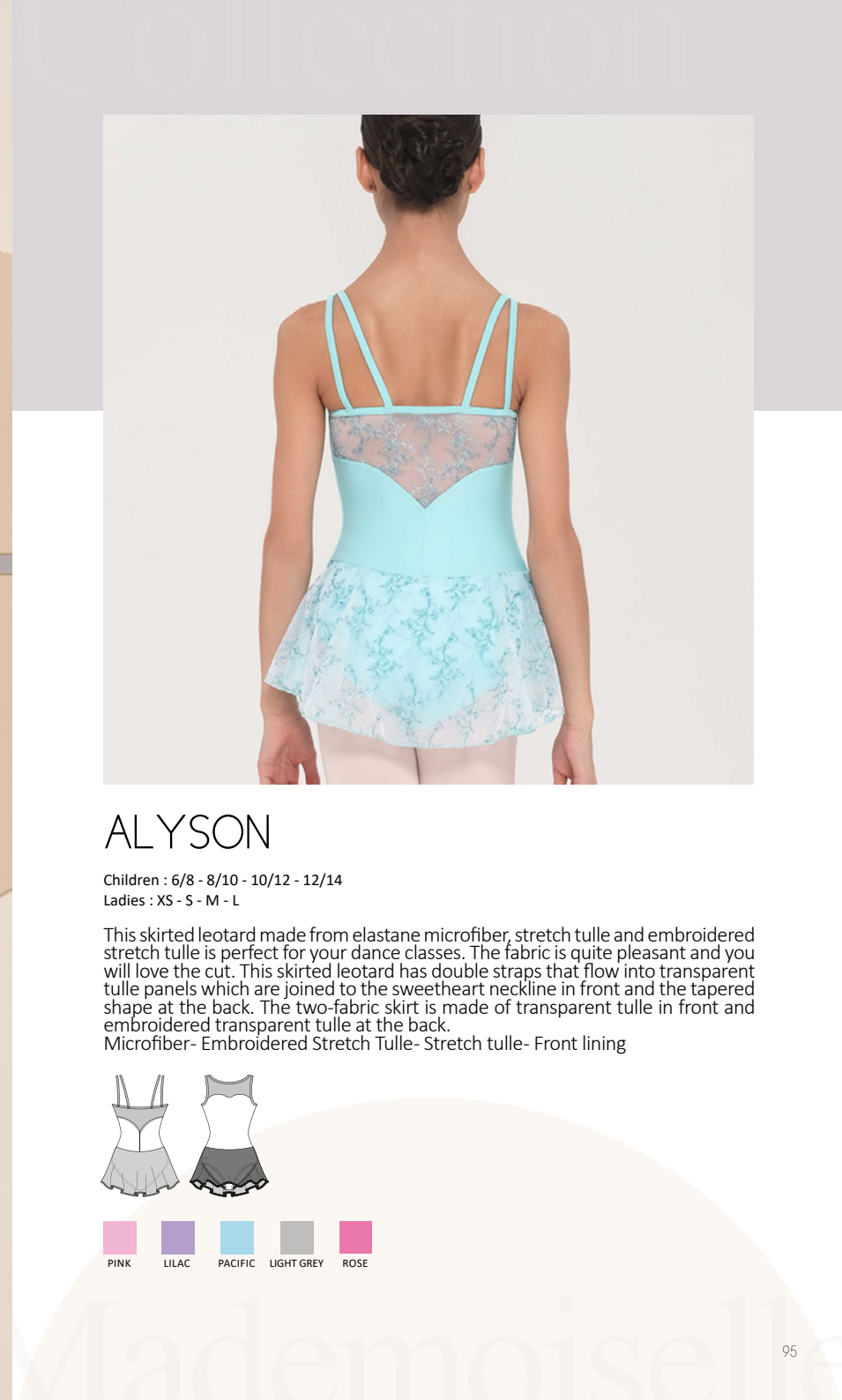
Ladies : XS - S - M - L

This short-sleeved leotard features a lovely V-shape in the front and back. A transparent tulle panel laid in crossover creates a sophisticated impression. The front, the backs of the sleeves, the lower panel and the bottom of the leotard are made of solid-colored elastane microfiber. Embroidered tulle is layered over the microfiber on the bust and is used on its own for a transparent effect on the fronts of the sleeves.

This ballet leotard embodies the grace of a ballerina with the delicateness of its colors, the tulle and the floral pattern.

Microfiber- Embroidered Stretch Tulle- Front lining





ALYSON

Children : 6/8 - 8/10 - 10/12 - 12/14

Ladies : XS - S - M - L

This skirted leotard made from elastane microfiber, stretch tulle and embroidered stretch tulle is perfect for your dance classes. The fabric is quite pleasant and you will love the cut. This skirted leotard has double straps that flow into transparent tulle panels which are joined to the sweetheart neckline in front and the tapered shape at the back. The two-fabric skirt is made of transparent tulle in front and embroidered transparent tulle at the back.

Microfiber- Embroidered Stretch Tulle- Stretch tulle- Front lining





CYPELLA

Ladies : XS/S - M/L

This asymmetrical ballet skirt is short in front and medium length at the back. The pull-on style is made from stretch tulle that has been embroidered all over with tiny flowers for a stunning effect. It has a finished waistband with a tiny bow sewn at the center at the back. This style will be great with a leotard from the same line or a solid leotard that matches the embroidery or contrast trim at the waist.

Bonus feature: Save precious time with this pull-on skirt!

Microfiber - Embroidered Stretch Tulle



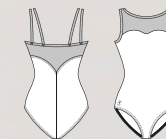
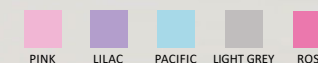
BELMINE

Children : 6/8 - 8/10 - 10/12 - 12/14

Ladies : XS - S - M - L

This extremely elegant double strapped camisole leotard lives somewhere between lingerie and fashion. Transparent embroidered tulle connects the straps to the sweetheart neckline in front and to the top of the backline. The back is further accentuated by the tapered tulle panel. This leotard is cut from our elastane microfiber and paired with embroidered stretch tulle whose transparency creates a contrast with your skin.

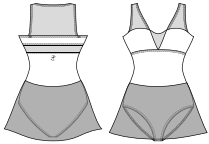
Microfiber - Embroidered Stretch Tulle - Front lining



SORAIA

Children : 6/8 - 8/10 - 10/12 - 12/14
Ladies : XS - S - M - L

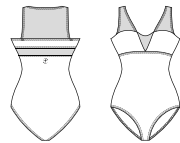
Fancy 3-fabric leotard-skirt combo. Solid color microfiber and flocked sheer stretch tulle yokes crossing on the upper body. Heart-shaped neckline. Sheer tulle skirt. Microfiber - Flocked Stretch Tulle - Stretch Tulle - Front lining



HESTIA

Children : 6/8 - 8/10 - 10/12 - 12/14
Ladies : XS - S - M - L

Fancy 2-fabric leotard. Solid color microfiber and flocked stretch tulle yokes crossing on the upper body. Heart-shaped neckline. Microfiber - Flocked Stretch Tulle - Front lining

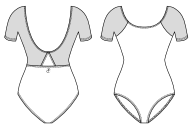




ZENON

Children : 6/8 - 8/10 - 10/12 - 12/14
Ladies : XS - S - M - L

2-fabric short sleeve leotard. Raglan-sleeve, no armhole or shoulder seam. Small triangle solid color microfiber yoke in the back.
Microfiber- Flocked Stretch Tulle- Front lining



TINA

Children : 4/8 - 8/12
Ladies : XS/S - M/L

Short skirt in fancy sheer stretch tulle with flocked flower-pattern. Black microfiber elastic waist, detailed with a small bow in the middle of the back.
Microfiber- Flocked Stretch Tulle





DRYADES

Ladies : XS/S - M/L

Medium-length skirt in fancy sheer stretch tulle with flocked flower-pattern. Black microfiber elastic waist, detailed with a small bow in the middle of the back. Microfiber - Flocked Stretch Tulle





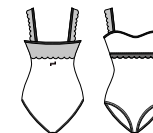


ERINE

Children : 6/8 - 8/10 - 10/12 - 12/14
Ladies : XS - S - M - L

Tank leotard with a scalloped trim lace overlay.

Microfiber - Stretch Lace - Front lining



WHITE



PINK



LILAC



PACIFIC



LIGHT GREY



BLACK

EVIDENCE

Children : 6/8 - 8/10 - 10/12 - 12/14
Ladies : XS - S - M - L

A tank-style camisole leotard with plunging V-shaped back, with a delicate lace trim. Microfiber - Stretch Lace - Front lining



WHITE



PINK



LILAC



PACIFIC



LIGHT GREY



BLACK





ETINCELLE

Children : 6/8 - 8/10 - 10/12 - 12/14

Ladies : XS - S - M - L

A tank-style dress featuring the elegant scalloped lace trim overlay and four-way stretch tulle skirt.

Microfiber- Stretch Lace- Stretch Tulle- Chest lining



WHITE



PINK



LILAC



PACIFIC



LIGHT GREY



BLACK

TUTUS





NUAGE

Children : 2/4 - 4/6 - 6/8 - 8/10 - 10/12 - 12/14

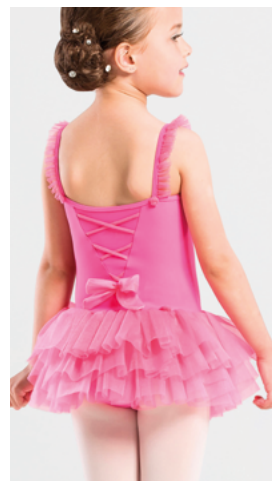
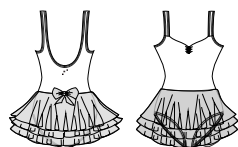
Beautiful pull-over children's tutu with three layers of tulle and a bow decal.
Microfiber- Glittering Tulle



NOISETTE

Children : 2/4 - 4/6 - 6/8 - 8/10 - 10/12 - 12/14

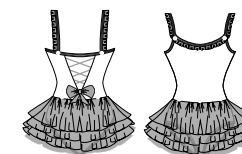
A pinch-front children's tutu dress with three layers of tulle and bow accent. This beautiful dress is perfect for the youngest dancer.
Microfiber- Glittering Tulle- Front lining



PRALINE

Children : 2/4 - 4/6 - 6/8 - 8/10 - 10/12 - 12/14

Tutu-cute, a stylish and classy take on a kid's fashion. This four-layer tutu dress offers soft ruffle, mini roses and crisscross detail. Any little ballerina would love this dress.
Microfiber- Glittering Tulle- Front lining



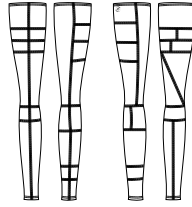


Wear Mei
Designed in France
WARM UP & ACTIVE WEAR

« Made by dancers,
for dancers »



SUPERBE



COLOR 6
BLACK
GREY
WHITE



COLOR 7
PEACOCK BLUE
OCEAN
WHITE



COLOR 8
BLACK
AMETHISTE
BYZANTINE

Children : 8/12
Ladies : XS/S - M/L

Eye-catching patchwork design that offers extreme comfort. These leg warmers are sure to become a favorite.
Knitted Acrylic Elasthan



TULIPE



COLOR 6
BLACK
GREY
WHITE



COLOR 7
PEACOCK BLUE
OCEAN
WHITE



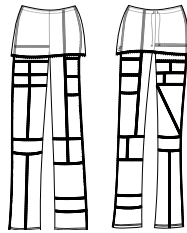
COLOR 8
BLACK
AMETHISTE
BYZANTINE

Children : 8/10 - 10/12
Ladies : XS - S - M - L

Stylish stretch knit crop-top featuring comfortable patchwork design and scoop neckline.
Knitted Acrylic Elasthan



SYRMA



COLOR 6
BLACK
GREY
WHITE



COLOR 7
PEACOCK BLUE
OCEAN
WHITE



COLOR 8
BLACK
AMETHISTE
BYZANTINE

Children : 8/10 - 10/12
Ladies : XS - S - M - L

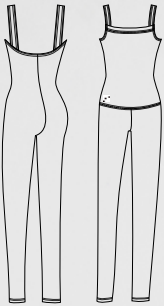
Eye-catching patchwork design that offers extreme comfort and stretch. These fold-over boot-cut pants are perfect from street to studio.
Knitted Acrylic Elasthan



CAPELLA

Children : 8/10 - 10/12
Ladies : XS - S - M - L

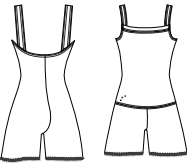
This warm up knit ankle length romper will keep you warm and comfortable in dance class.
Knitted Acrylic Elasthan



ALOES

Children : 8/10 - 10/12
Ladies : XS - S - M - L

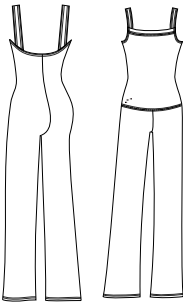
Our knitted romper is a versatile garment that can also be rolled down to the waist and worn as shorts.
Knitted Acrylic Elasthan



CALOU

Children : 8/10 - 10/12
Ladies : XS - S - M - L

Our knit boot-leg pant romper is a perfect addition to your class apparel.
Knitted Acrylic Elasthan





NAYA 

Children : 8/10 - 10/12

Ladies : XS - S - M - L

Short sleeve crop top sweater with an eye-catching design and comfortable cut.
Knitted Acrylic Elasthan



SALMON



GREY



BLACK



TIARA

Children : 8/10 - 10/12
Ladies : XS - S - M - L

Gorgeous, warm and comfortable fold over shorts including a waist drawstring with a rolled hem. Knitted Acrylic Elasthan



CEYLAN

Children : 8/10 - 10/12
Ladies : XS - S - M - L

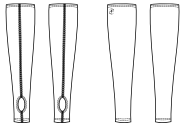
Acrylic warm-up shorts. Elastic on the waist for a secure fit. Knitted Acrylic Elasthan



IZALIA

Children : 8/12
Ladies : XS/S - M/L

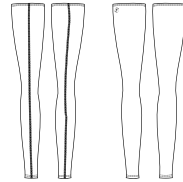
Short stirrup leg warmers.
Knitted Acrylic Elasthan



CRISTAL

Children : 8/12
Ladies : XS/S - M/L

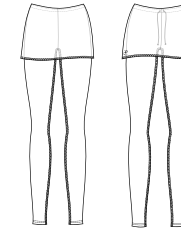
Full length skinny fit leg warmers.
Soft and comfortable.
Knitted Acrylic Elasthan



CRYSALIDE

Children : 8/10 - 10/12
Ladies : XS - S - M - L

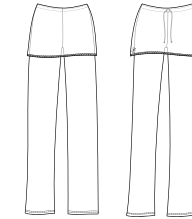
A unique and flattering sweater
waistband folds over these warm
tights with a drawstring waist.
Knitted Acrylic Elasthan



UTAMI

Children : 8/10 - 10/12
Ladies : XS - S - M - L

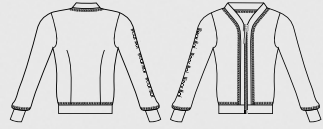
These warm up pants feature a
boot cut style with a fold over
waistband.
Knitted Acrylic Elasthan



PATIENCE

Ladies : XS - S - M - L

Fitted jacket with zippered front, embellished with silver serigraphy on the right arm. Unlined. Double Viscose Elasthan Jersey



BLACK



PIVOINE

Ladies : XS - S - M - L



Soft hooded jacket with front zipper, embellished with a silkscreen print on the right arm and patch pockets on the lower center front. Unlined. Double Viscose Elasthan Jersey



BLACK



PALOMINO

Ladies : XS - S - M - L



Straight cut pants with front and back hip yokes, wide elastic waistband, and a drawstring waist for greater comfort. Topstitched hem finish at the bottom and silkscreen print on the entire side of the right leg. Double Viscose Elasthan Jersey



BLACK



PANDORE

Ladies : XS - S - M - L



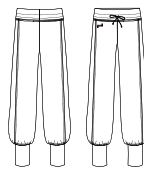
Wide jogging pants tightened at the ankles, finished with a lapel band at the waist, crossed by a drawstring, with silkscreen print centered on the right leg. Double Viscose Elasthan Jersey



BLACK



OPUS



Children : 6/8 - 8/10 - 10/12 - 12/14
Ladies : XS - S - M - L

Four-way stretch warm-up pants with fitted ankle and a drawstring for secure fit. Perfect for a dancer that wants to stay warm or can be used as a team uniform warm-up. Pair with Iliade jacket for a complete look. Double Viscose Elasthan Jersey



NAVY BLACK



PENELOPE



Children : 6/8 - 8/10 - 10/12 - 12/14
Ladies : XS - S - M - L

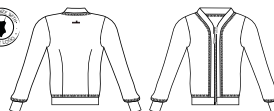
Warm-up pants with elastic waist band and drawstring. Wide leg for a more relaxed and comfortable fit. Double Viscose Elasthan Jersey



NAVY BLACK



ILIADE



Children : 6/8 - 8/10 - 10/12 - 12/14
Ladies : XS - S - M - L

Ladies cut four-way stretch warm-up jacket with a front zip and double dart seams. This jacket is perfect for staying warm between rehearsals, or for use as a team uniform warm-up. Pair with Opus pants for a complete look. Double Viscose Elasthan Jersey



NAVY BLACK



ILIADE



GIPSY



Children : 4/6 - 6/8 - 8/10 - 10/12
Ladies : XS - S - M - L - XL** - XXL**
* Not available in sizes 4/6 and 6/8
** Available in black only

Gipsy short features soft microfiber elastane fabric and a comfortable elastic waistband.
Microfiber



MACARON



Children : 6/8 - 8/10 - 10/12
Ladies : XS - S - M - L

These hotpant shorts provide a flattering silhouette in the studio or on stage.
Microfiber



ARIELLE



Children : 6/8 - 8/10 - 10/12
Ladies : XS - S - M - L

Booty shorts that fit at the natural waistline. Perfect for any dance style.
Microfiber



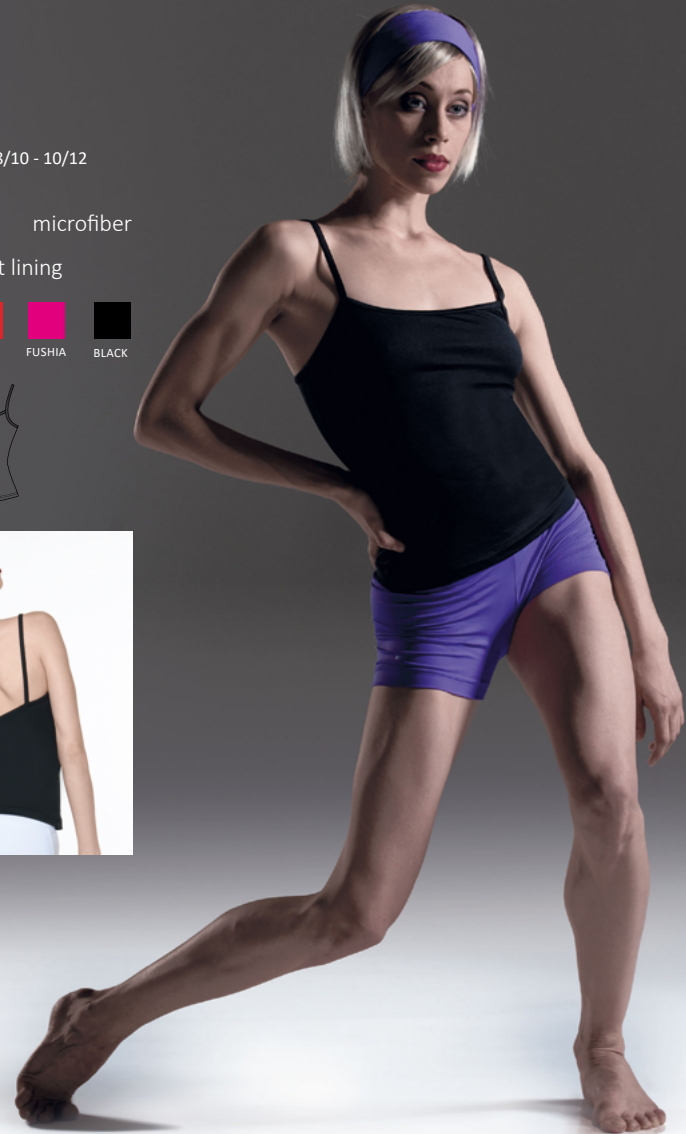
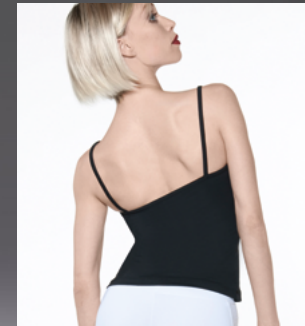
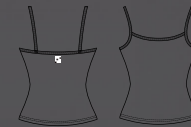
ACTIVE WEAR

ANA



Children : 4/6 - 6/8 - 8/10 - 10/12
Ladies : XS - S - M - L

Simple, soft, microfiber
camisole.
Microfiber - Front lining





IKITA

Children : 4/6 - 6/8 - 8/10 - 10/12
Ladies : XS - S - M - L

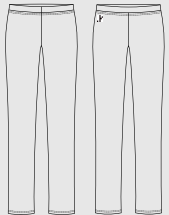
Simple, elegant, classic short
camisole top with comfortable
waistband.
Microfiber- Front lining



IRIS

Children : 4/6 - 6/8 - 8/10 - 10/12
Ladies : XS - S - M - L

Classic U-cut jazz pants.
Comfortable elastic waist
band and soft microfiber.
Microfiber





Wear **M&I**
Designed in France
MEN & BOYS

« Made by dancers,
for dancers »





SOLO

Children : 4/6 - 6/8 - 8/10 - 10/12
Men : XS - S - M - L - XL

Heavyweight men footed tights with a ballet-style high waist.
Cotton Elasthan



WHITE



GREY



BLACK



ORION

Children : 4/6 - 6/8 - 8/10 - 10/12
Men : XS - S - M - L - XL

Heavy weight microfiber men's footed tights and a ballet waist.
Microfiber



WHITE



GREY



BLACK



HIDALGO

Children : 10/12
Men : XS - S - M - L - XL

These heavyweight elastane convertible tights for men are the perfect answer to a male dancer's needs. A side opening at the foot allows an easy transition from footed tights to footless tights.
Microfiber



WHITE



GREY



BURGUNDY



NAVY



BLACK

ALBAN

Children : 4/6 - 6/8 - 8/10 - 10/12
Men : XS - S - M - L - XL

Men's heavyweight elastane footless tights with reinforced inseam gusset.
Microfiber



WHITE



GREY



BURGUNDY



NAVY



BLACK



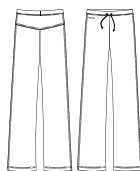
ALBAN



PRESTON

Children : 6/8 - 8/10 - 10/12 - 12/14
Men : XS - S - M - L

Men's warm-up pants with elastic waist band and drawstring. Wide leg for a more relaxed and comfortable fit.
Double Viscose Elasthan Jersey



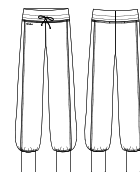
NAVY BLACK



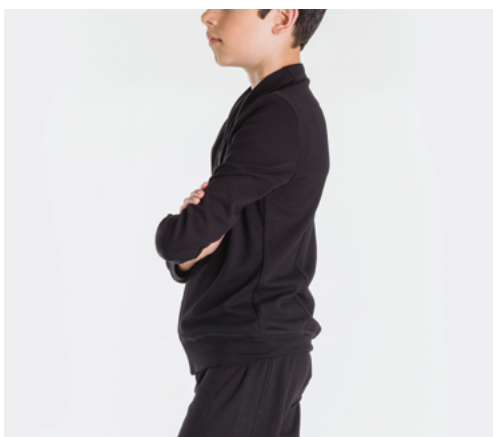
BELEM

Children : 6/8 - 8/10 - 10/12 - 12/14
Men : XS - S - M - L

Men's cut four-way stretch warm-up pants with fitted ankles and a drawstring for secure fit. Perfect for a dancer that wants to stay warm as well as travel uniform for your team or school. Pair with Malone jacket for a complete look.
Double Viscose Elasthan Jersey



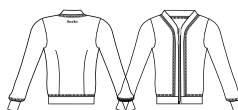
NAVY BLACK



MALONE

Children : 6/8 - 8/10 - 10/12 - 12/14
Men : XS - S - M - L

Men's cut four-way stretch warm jacket with a front zip and double dart seams. Perfect for a dancer that wants to stay warm or can be used as a team uniform warm-up. Pair with Belem pants for a complete look.
Double Viscose Elasthan Jersey



NAVY BLACK



ALCYONE

Men : XS - S - M - L

Men's wide elastic 12,50cm waistband. Offering effortless support and a fitted silhouette.
Elastic Elasthan



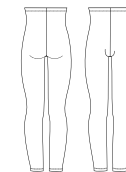
BLACK DARK BEIGE



HAMADA

Children : 4/6 - 6/8 - 8/10 - 10/12
Men : XS - S - M - L - XL

This heavyweight footless tight for men features a ballet style high waist that can be rolled down, or worn with suspenders for class or performance.
Cotton Elasthan



WHITE GREY BLACK



CLOVIS

Children : 4/6 - 6/8 - 8/10 - 10/12
Men : XS - S - M - L

These convertible tights for men are the perfect answer to a male dancer's needs. A comfortable opening under the arch and not across the foot, helps to stay comfortable and not have any seams under the foot.
Cotton Elasthan



WHITE GREY BLACK



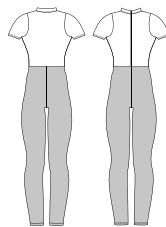




ELAN

Children : 6/8 - 8/10 - 10/12
Men : XS - S - M - L - XL

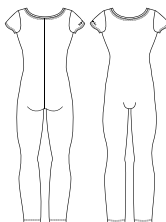
Men's two-tone footless unitard. High neck with zipper front.
Cotton Elasthan



ATLAS

Children : 8/10 - 10/12 - 12/14
Men : XS - S - M - L - XL

Cap sleeved men's unitard with a wide neckline in front and back.
Microfiber





CENTAUR

Children : 4/6 - 6/8 - 8/10 - 10/12 - 12/14
Men : XS - S - M - L - XL



This short-sleeved leotard with a V-neck checks all the boxes for ballet dancers. Designed with no cup in front, this men's leotard has a thong back so that it disappears under your tights. This product is cut from our elastane microfiber so it fits you like a second skin and gives you more range of motion.
Bonus feature: This leotard is invisible under your tights!
Microfiber



WHITE



BLACK



LUPIN

Children : 4/6 - 6/8 - 8/10 - 10/12 - 12/14
Men : XS - S - M - L - XL



This short-sleeved leotard features a round neckline with subtle slits at the collar. It is a must-have for ballet class. It is made from elastane microfiber to give you maximum comfort. This men ballet leotard becomes a second skin, hugging your body to give you total freedom of movement. This product does not have a cup in front and it designed with a thong back so that it is imperceptible under your tights.
Bonus feature: This leotard will not create any lines under your tights!
Microfiber



WHITE



DARK GREY



BURGUNDY



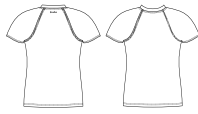
NAVY



BLACK



ALPIN



Children : 4/6 - 6/8 - 8/10 - 10/12 - 12/14
Men : XS - S - M - L - XL

Raglan sleeves scoop neckline t-shirt, fits tight and close to the body.
Microfiber



CONRAD



Children : 4/6 - 6/8 - 8/10 - 10/12 - 12/14
Men : XS - S - M - L

An ideal uniform staple, this crewneck cap sleeve men microfiber shirt is anything but basic.
Microfiber



HAXO



Children : 4/6 - 6/8 - 8/10 - 10/12 - 12/14
Men : XS - S - M - L - XL

This soft microfiber, short sleeve, V-neck T-shirt is classic and exceptionally comfortable.
Microfiber

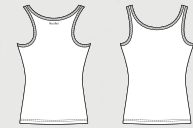
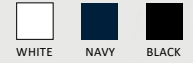


MERCURY



Children : 4/6 - 6/8 - 8/10 - 10/12 - 12/14
Men : XS - S - M - L - XL

This sleeveless tank top with a slightly low-cut rounded neckline is one of the essentials for your dance classes. In a swimmer style with wide openings at the back and tone-on-tone stitching. The tapered fit guarantees maximum comfort for more freedom of movement.
Elastane Microfiber.





IGOR

Children : 4/6 - 6/8 - 8/10 - 10/12 - 12/14
Men : XS - S - M - L



Wide neck men's leotard with cap sleeves. Full seat bottom without front padding. Microfiber



WHITE

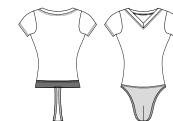


BLACK



IVAN

Children : 6/8 - 8/10 - 10/12
Men : XS - S - M - L - XL



Short sleeve V-neck cotton leotard features a built in fully front padded dance belt with thong back. An ideal uniform piece for all ages. Cotton Elasthan



WHITE



BLACK



ALTAN

Children : 4/6 - 6/8 - 8/10 - 10/12
Men : XS - S - M - L



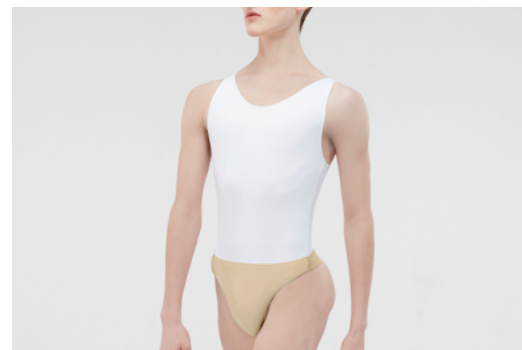
Men's full seat leotard. V-front cotton shirt, attached front padded full seat dance belt. Cotton Elasthan



WHITE



BLACK



VERSAO

Children : 6/8 - 8/10 - 10/12 - 12/14
Men : XS - S - M - L



Microfiber basic men's full tank leotard with attached thong back dance belt. Microfiber



WHITE

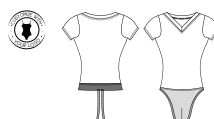


BLACK



HORACIO

Children : 6/8 - 8/10 - 10/12 - 12/14
Men : XS - S - M - L - XL



One of the most requested items, full microfiber shirt and attached microfiber dance belt combination. An ideal uniform piece for all ages, perfect for class and stage. Microfiber



WHITE



DARK GREY

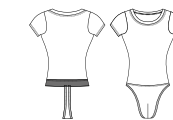


BLACK



JASON

Children : 6/8 - 8/10 - 10/12 - 12/14
Men : XS - S - M - L - XL



Short sleeve leotard with wide front and back scoop neck and built in dancebelt with thong back. Microfiber



WHITE



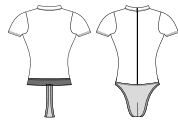
NAVY



BLACK



OBERON



Children : 6/8 - 8/10 - 10/12 - 12/14
Men : XS - S - M - L - XL

Short sleeve leotard with zippered front mock turtleneck and built in dancebelt with thong back.
Microfiber



WHITE



DARK GREY



NAVY

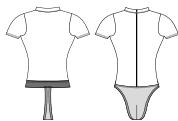


BURGUNDY



BLACK

CONDOR



Children : 6/8 - 8/10 - 10/12
Men : XS - S - M - L - XL

Perfect for ballroom and ballet, this short sleeve mock turtleneck leotard with functional low zip front features a built-in fully padded dance belt with a thong back.
Cotton Elasthan



WHITE

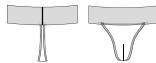


BLACK





DANCE BELT EXTRA WIDE



Men : XS - S - M - L - XL

Cotton elastane fully padded dance belt featuring a thong back and 12,5cm comfortable extra-wide elastic for added support.
Cotton Elasthan



DARK BEIGE BLACK



DANCE BELT FULL SEAT



Children : 4/6 - 6/8 - 8/10 - 10/12 - 12/14

Men : XS - S - M - L - XL

Boys/Men's full back dance belt. Features 4cm elastic waistband, contoured front shaped to the male anatomy and full front padding.
Cotton Elasthan



DARK BEIGE WALNUT



DANCE BELT NARROW



Children : 8/10 - 10/12 - 12/14

Men : XS - S - M - L - XL

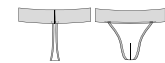
Cotton elastane fully padded dance belt features a thong back and 4cm soft touch elastic for comfort. Runs true to size.
Cotton Elasthan



DARK BEIGE WALNUT BLACK



DANCE BELT WIDE



Men : XS - S - M - L - XL

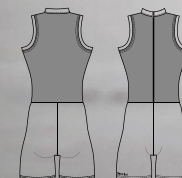
Cotton elastane fully padded dance belt features a thong back and 7,2cm soft touch elastic for comfort. Runs true to size.
Cotton Elasthan



DARK BEIGE WALNUT BLACK

Men : XS - S - M - L

Men's mock turtleneck, sleeveless
biketard featuring a soft front zipper
edging detail and a men's leg cut.
Microfiber

BLACK
NAVYBLACK
CHOCOLATETANGO 

Children : 8/10 - 10/12

Men : XS - S - M - L

This men's microfiber, racerback,
tank, biketard with men's leg cut
features shorter leg length and is
great fitting for men.
Microfiber



BLACK





ROMEO

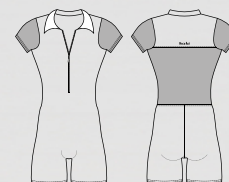
Men : XS - S - M - L

This unique men's fashion unitard incorporates the perfect blend of microfiber and four-way stretch mesh sleeves and back panel. Polo collar with front zip. No front seam.

Microfiber- Stretch tulle

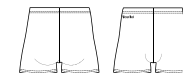


DARK GREY BLACK NAVY





MARCEAU



Children : 6/8 - 8/10 - 10/12
Men : XS - S - M - L

Basic men's fitted dance short with four-way stretch.
Microfiber



BEIGE DARK GREY BURGUNDY BLACK



PACO



Children : 6/8 - 8/10 - 10/12
Men : XS - S - M - L

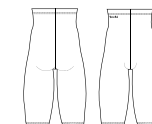
Men's leg cut, cotton shorter length shorts that include a comfortable elastic waistband.
Cotton Elasthan



BLACK



ODEON



Children : 4/6 - 6/8 - 8/10 - 10/12
Men : XS - S - M - L

This men's microfiber over-the-knee dance pants is a perfect uniform option. Reinforced inseam gusset and secure waist elastic.
Microfiber



LIGHT GREY DARK GREY BURGUNDY ROYAL BLUE NAVY BLACK



LORCA



Children : 4/6 - 6/8 - 8/10 - 10/12
Men : XS - S - M - L

Men's athletic short with a thin waistband, loose fit and maximum flexibility.
Microfiber



BLACK

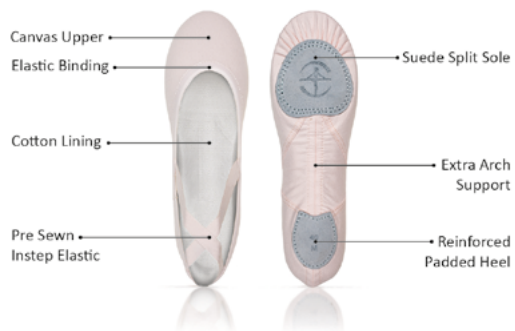


« Made by dancers,
for dancers »

Wear Mei
Designed in France
SHOES & TIGHTS



PREMIUM STRETCH CANVAS



All sizes are unisex.

VESTA

Split-sole stretch canvas ballet shoe. Full stretch canvas is handmade and machine stitched. No drawstring binding, which provides unsurpassed comfort and flexibility. This premium shoe also offers flat stitch pleats that prevent bunching and bulging under the toes and the sole of the foot. Lower vamp shows off the arch of the foot while the stretch canvas material will hug the dancer's foot and provide a sleek and professional look. Available in three widths.

We suggest opting for two sizes larger than your regular fit. If you want more support, sticking to your usual size or going one size up would be ideal.

NARROW : Size 26 to 46

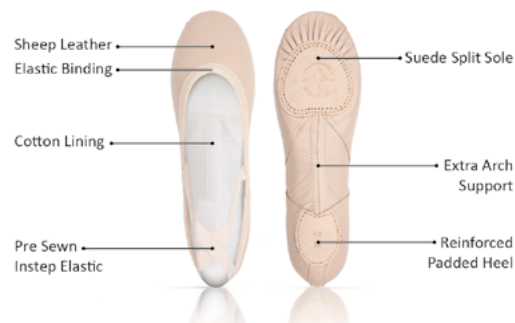
MEDIUM : Size 24 to 50 - up to size 46 in LIGHT PINK

WIDE : Size 33 to 50 - not available in LIGHT PINK

No Half Size



PREMIUM STRETCH LEATHER



All sizes are unisex.

PLUTON

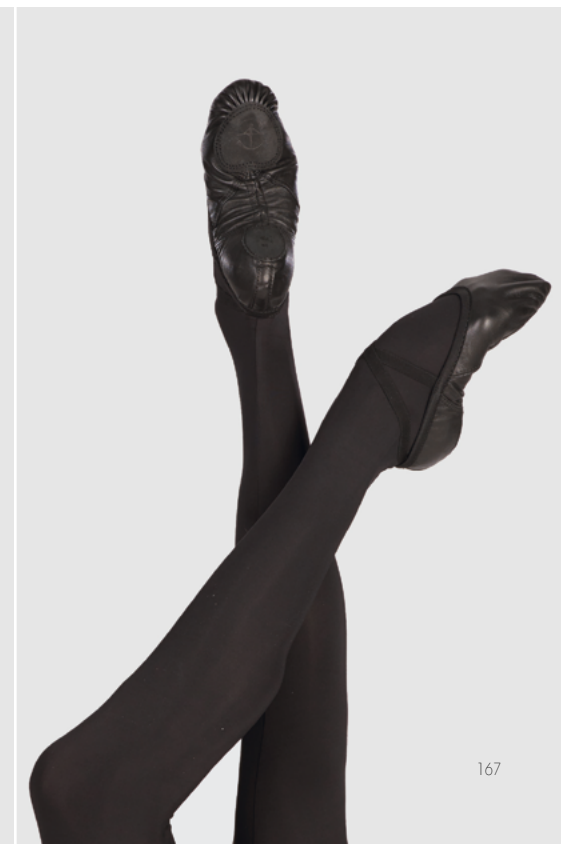
Split-sole premium "stretch" leather ballet shoe. Full glove leather is handmade and machine stitched. No drawstring binding, which provides unsurpassed comfort and flexibility. This premium shoe also offers flat stitch pleats that prevent bunching and bulging under the toes and the sole of the foot. Lower vamp shows off the arch of the foot while the premium glove leather material will hug the dancer's foot and provide a sleek and professional look. Available in three widths.

NARROW : Size 33 to 44

MEDIUM : Size 28 to 50

WIDE : Size 38 to 50

No Half Size

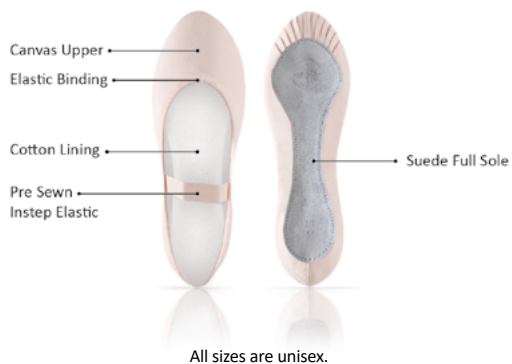




JUNON ✱

These full sole canvas ballet shoes come in both medium and narrow widths to accommodate growing feet. The full sole design will provide support for our beginner dancers as they learn how to point and arch. Durable canvas on top and sturdy leather sole at the bottom with soft interior lining for comfort.

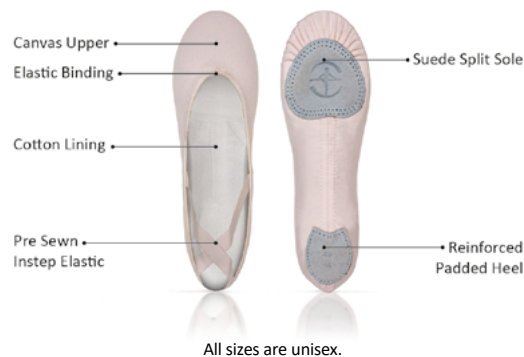
NARROW : Size 26 to 43
MEDIUM : Size 23 to 43
No Half Size



CERES ♀

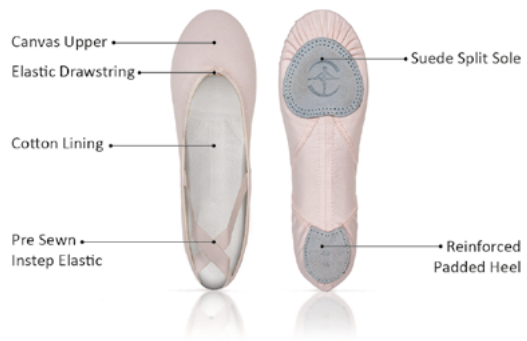
A perfect premium stretch canvas ballet shoe for beginners with the look and feel of our Vesta. Two widths are provided to accommodate growing feet. Split-sole ballet slipper with pre-sewn elastics.

NARROW : Size 26 to 43
MEDIUM : Size 23 to 43
No Half Size





PREMIUM CANVAS



All sizes are unisex.

NEPTUNE

This premium split-sole ballet shoe features high quality canvas and flexible lining for comfort. Flat stitch pleats prevent bunching and bulging under the toes and the sole of the foot. Lower vamp as well as arch stitching shows off the arch of the foot and the shape of the sole which creates a better profile under the foot. Available in two widths.

NARROW : Size 30 to 44

MEDIUM : Size 26 to 50 - up to size 46 in LIGHT PINK

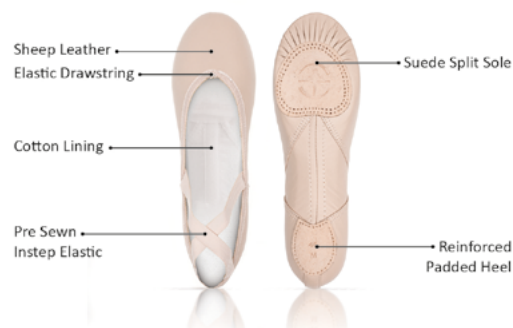
No Half Size



WHITE LIGHT PINK GREY BLACK



PREMIUM LEATHER



All sizes are unisex.

SATURNE

Split-sole premium leather ballet shoe. Full glove leather is handmade and machine stitched. This premium shoe also features flat stitching of the pleats that prevents bunching and bulging under the toes and the sole of the foot. Lower vamp shows off the arch of the foot while the premium glove leather material will hug the dancer's foot and provide a sleek and professional look. Available in two widths.

NARROW : Size 36 to 44

MEDIUM : Size 30 to 46

No Half Size



WHITE SALMON BLACK



INSTINCT 2

Stretch leather "Turner Shoe" with a high quality elastic binding and two elastics for secure fit.

This turner shoe will allow a dancer to practice and perform their best without worrying about their toes separating.

The soft leather properly follows the dancer's foot

Half-sole design with covered toes.

Suede sole with pleats.

Premium elastic sewn in two directions for secure fit and wear.

Ideal for dancers that want a closed toe shoe without the heel constriction.

Leather

Size : XS - S - M - L - XL



SALMON

IMPULSE 2

Stretch canvas "Turner Shoe" with a high quality elastic binding and two elastics for secure fit.

This turner shoe will allow a dancer to practice and perform their best without worrying about their toes separating.

Stretch canvas properly follows the dancer's foot.

Half-sole design with covered toes.

Suede sole with pleats.

Premium elastic sewn in two directions for secure fit and wear.

Ideal for dancers that want a closed toe shoe without the heel constriction.

Stretch canvas

Size : XS - S - M - L - XL



DARK PINK



TAN



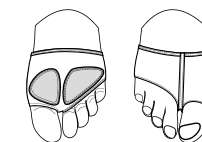
WALNUT

PEGASUS

Innovative, perforated microfiber material providing an invisible look in class and on stage. This breathable modern-style shoe will allow a dancer to have support, padding on the ball of the foot as well as connection to the floor with an open-toe design. It separates the toe from rest of foot and provides a snug, glove-like fit with its premium elastic binding.

Perforated microfiber

Size : XS - S - M - L - XL - XXL



DARK BEIGE



DEMI-POINTE

The Demi-Pointe is a wonderful way for a dancer **to transition** from a Vesta or Pluton ballet slipper to one of Wear Moi’s popular pointe shoe styles.

This satin shoe is handmade in the **turned construction method** and features evenly spaced pleats on the bottom/front of the shoe.

The Demi-Pointe contains a leather sole and a **lightweight box toe**, like traditional pointe shoes. The most important thing to remember about a Demi-Pointe is that **it does not contain a shank** – the most vital part of a pointe shoe to stand “en pointe”. The most effective use of a Demi-Pointe is when it is part of the syllabus required by a school or conservatory, where a teacher can use this tool in the training process towards pointe work. Typically, teachers will recommend ballet slippers at the barre and a Demi-Pointe for center work one year before the student advances to “full” pointe. This allows the foot to **become conditioned to the feel of a pointe shoe**.

In addition, a Demi-Pointe develops and strengthens muscles in preparation for full pointe work. Also, the young dancer becomes familiar with tying their ribbons. The Demi-Pointe is available with pre-stitched, high-quality **satin or cotton ribbons** free of charge.

Demi-Pointe’s sizing follows the **UK sizing system**.

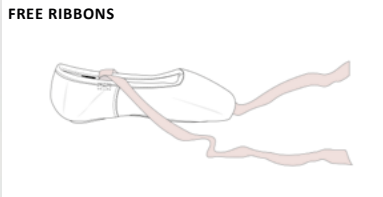
DEMI-POINTE

Satin demi-pointe shoes. Special box for beginners with a U cut throat and no shank. Excellent pre-pointe shoe to develop and strengthen the muscles in preparation for full pointe work. Should never be used to go “en pointe.” Elastic drawstring.



SALMON

SIZE	WIDTH	FREE RIBBONS
2 to 7	medium wide extra wide x extra wide	X XX XXX XXXX
		available with pre-stitched satin or cotton



DEMI-POINTE MORE OPTIONS SIZE

If your size does not match our core sizing, you have more size options to order, ranging from 13 to 9.

	MORE OPTIONS			STOCK ITEMS												MORE OPTIONS			
SIZE UK	13	1	1.5	2	2.5	3	3.5	4	4.5	5	5.5	6	6.5	7	7.5	8	8.5	9	
SIZE EUR	32	33	33.5	34	35	35.5	36	36.5	37	38	39	39.5	40	41	41.5	42	42.5	43	
SIZE JAPAN	19.8	20.4	20.8	21.1	21.8	22.1	22.4	22.8	23.1	24.2	24.9	25.5	25.8	26.4	26.8	27.2	27.5	27.8	
SIZE US	1	3.5	4	4.5	5	5.5	6	6.5	7	7.5	8	8.5	9	9.5	10	10.5	11	11.5	



Sleek and elegant, the Alfa pointe shoe is ideal for the **moderate-shaped Greek or Roman foot**, where the second toe predominates or two toes of equal length. Handmade in the classic **turned construction** method (made inside out) by craftsmen trained in age-old European shoemaking traditions. Dancers embrace Alfa worldwide. Its clean lines contribute to a **moderate crown height with lowered side and heel measurements**.

An open **U-shaped throat** provides freedom in the vamp area. The throat of the pointe shoe features an **elastic drawstring encased in a cotton binding**. Its **reinforced platform ensures extended wear**, while a silicone gel tip pad applied to the inside of the shoe's platform offers additional comfort.

High wings provide lateral support to the metatarsals. A polyurethane (microfiber) insole and back-quarter panels prevent "sliding" in the shoe and wicks away moisture.

An **embossed leather outsole** marked with a decorative design, including the size, width, and shank strength, provides traction.

Alfa is available with pre-stitched, high-quality **satin or cotton ribbons** free of charge.

Alfa's sizing follows the **UK sizing system**.

Elastic drawstring encased in a cotton binding



Greek-Square

Roman

ALFA
SOFT

Alfa Soft shank provides light support to the arch and is ideal for dancers with tight ligaments or an underdeveloped arch. In most cases, a "beginner" who is starting pointe work will be best served with a soft shank. The minimal support provided by a soft shank will allow the dancer to stretch their ligaments to enable the dancer to stand fully "on top" of their platform. In other cases, a "seasoned" dancer with very tight ligaments may continue to wear a soft shank.

SALMON

SIZE	WIDTH	FREE RIBBONS
3 to 8	medium wide extra wide x extra wide	X XX XXX XXXX satin or cotton

HIGH WINGS

SOFT

FULL SHANK

BOX LOW PROFILE

TEXON
TEXON
LEATHER

BINDING : ELASTIC DRAWSTRING

ALFA
MEDIUM

Alfa Medium shank provides ample support to the arch for most dancers. For dancers with pliable ligaments, a medium shank allows them to stand "on top" of their platform with great ease.

SALMON

SIZE	WIDTH	FREE RIBBONS
3 to 8	medium wide extra wide x extra wide	X XX XXX XXXX satin or cotton

HIGH WINGS

MEDIUM

FULL SHANK

BOX LOW PROFILE

TEXON
CARDBOARD FIBER 2.0
LEATHER

BINDING : ELASTIC DRAWSTRING

ALFA POINTE MORE OPTIONS

The Salmon, Walnut and Carmel colors will match your skin tone.
The White and Black colors will be more adapted to the needs of your dance performances.

SALMON

WHITE

BLACK

WALNUT

CARMEL

If your size does not match our core sizing, you have more size options to order.

SIZE UK	MORE OPTIONS				STOCK ITEMS											
	1	1.5	2	2.5	3	3.5	4	4.5	5	5.5	6	6.5	7	7.5	8	
SIZE EUR	33	33.5	34	35	35.5	36	36.5	37	38	39	39.5	40	41	41.5	42	
SIZE JAPAN	20.4	20.8	21.1	21.8	22.1	22.4	22.8	23.1	24.2	24.9	25.5	25.8	26.4	26.8	27.2	
SIZE US	3.5	4	4.5	5	5.5	6	6.5	7	7.5	8	8.5	9	9.5	10	10.5	

ALFA HARD

Alfa Hard shank supports a malleable arch with stretched ligaments. For the best support for this type of arch, a hard shank will provide the most significant support. In addition, the shank must conform to the foot's arch. A three-quarter cut shank provides the utmost contact to the arch for maximum support while "en pointe."

SALMON

SIZE	WIDTH	FREE RIBBONS
3 to 8	<div>medium</div> <div>wide</div> <div>extra wide</div> <div>x extra wide</div>	<div>X</div> <div>XX</div> <div>XXX</div> <div>XXXX</div>
		satin or cotton

HIGH WINGS

HARD

3/4 SHANK

BOX LOW PROFILE

TEXON

CARDBOARD FIBER 2.5

LEATHER

BINDING : ELASTIC DRAWSTRING

ALFA REINFORCED HARD

Alfa Reinforced Hard shank supports a highly flexible foot with stretched ligaments - either through the development of the arch or born with loose ligaments. A reinforced hard shank will provide the ultimate support to the arch. A half shank is best suited for this type of arch to ensure that the shank will conform entirely to the arch.

SALMON

SIZE	WIDTH	FREE RIBBONS
3 to 8	<div>medium</div> <div>wide</div> <div>extra wide</div> <div>x extra wide</div>	<div>X</div> <div>XX</div> <div>XXX</div> <div>XXXX</div>
		satin or cotton

HIGH WINGS

REINFORCED HARD

1/2 SHANK

BOX LOW PROFILE

TEXON

POLYCARBONATE

LEATHER

BINDING : ELASTIC DRAWSTRING

ALFA POINTE MORE OPTIONS

The Salmon, Walnut and Carmel colors will match your skin tone.
The White and Black colors will be more adapted to the needs of your dance performances.

SALMON

WHITE

BLACK

WALNUT

CARMEL

If your size does not match our core sizing, you have more size options to order.

	MORE OPTIONS				STOCK ITEMS												
	1	1.5	2	2.5	3	3.5	4	4.5	5	5.5	6	6.5	7	7.5	8		
SIZE UK																	
SIZE EUR	33	33.5	34	35	35.5	36	36.5	37	38	39	39.5	40	41	41.5	42		
SIZE JAPAN	20.4	20.8	21.1	21.8	22.1	22.4	22.8	23.1	24.2	24.9	25.5	25.8	26.4	26.8	27.2		
SIZE US	3.5	4	4.5	5	5.5	6	6.5	7	7.5	8	8.5	9	9.5	10	10.5		



Like Alfa, the Omega pointe shoe is ideal for the **moderate-shaped Greek or Roman foot**, where the second toe predominates or two toes of equal length, as both pointe shoes share the same last. Omega, manufactured in the **turn construction** method (made inside out) with external pleats, is English shoemaking traditionalism at its best. Noted for its clean appearance when placed on the foot, Omega's **elasticized binding** enhances the dancers' leg line to become a natural foot extension.

Additionally, a **moderate crown height** adds to Omega's eloquent line. A **reduction of the side and heel measurement** and an open **U shape throat** display the dancers' arch to its maximum potential. Its **reinforced platform ensures extended wear**, while a silicone gel tip pad applied to the inside of the shoe's platform offers additional comfort. Lateral support at the metatarsals is due to Omega's **supportive wings**. A polyurethane (microfiber) insole and back-quarter panels prevent "sliding" in the shoe and wicks away moisture.

An **embossed leather outsole** marked with a decorative design, including the size, width, and shank strength, provides traction.

Omega is available with pre-stitched, high-quality **satin or cotton ribbons** free of charge.

Omega's sizing follows the **UK sizing system**.

Elasticized binding without drawstring



Greek-Square Roman

OMEGA SOFT

Omega Soft shank provides light support to the arch and is ideal for dancers with tight ligaments or an underdeveloped arch. In most cases, a "beginner" who is starting pointe work will be best served with a soft shank. The minimal support provided by a soft shank will allow the dancer to stretch their ligaments to enable the dancer to stand fully "on top" of their platform. In other cases, a "seasoned" dancer with very tight ligaments may continue to wear a soft shank.

<div></div> <div>SALMON</div>			
SIZE	WIDTH		FREE RIBBONS
3 to 8	medium	X	satin or cotton
	wide	XX	
	extra wide	XXX	
	x extra wide	XXXX	

HIGH WINGS

SOFT

FULL SHANK

BOX LOW PROFILE

TEXON

TEXON

LEATHER

BINDING : ELASTIC BINDING

OMEGA MEDIUM 3/4

Omega Medium 3/4 shank provides ample support to the arch for most dancers. For dancers with pliable ligaments, a medium shank allows them to stand "on top" of their platform with great ease. A three-quarter cut shank provides the utmost contact to the arch for maximum support while "en pointe."

<div></div> <div>SALMON</div>			
SIZE	WIDTH		FREE RIBBONS
3 to 8	medium	X	satin or cotton
	wide	XX	
	extra wide	XXX	
	x extra wide	XXXX	

HIGH WINGS

MEDIUM

3/4 SHANK

BOX LOW PROFILE

TEXON

CARDBOARD FIBER 2.0

LEATHER

BINDING : ELASTIC BINDING

OMEGA POINTE MORE OPTIONS

The Salmon, Walnut and Carmel colors will match your skin tone.
The White and Black colors will be more adapted to the needs of your dance performances.

SALMON

WHITE

BLACK

WALNUT


CARMEL

If your size does not match our core sizing, you have more size options to order.

SIZE UK	MORE OPTIONS				STOCK ITEMS												
	1	1.5	2	2.5	3	3.5	4	4.5	5	5.5	6	6.5	7	7.5	8		
SIZE EUR	33	33.5	34	35	35.5	36	36.5	37	38	39	39.5	40	41	41.5	42		
SIZE JAPAN	20.4	20.8	21.1	21.8	22.1	22.4	22.8	23.1	24.2	24.9	25.5	25.8	26.4	26.8	27.2		
SIZE US	3.5	4	4.5	5	5.5	6	6.5	7	7.5	8	8.5	9	9.5	10	10.5		


OMEGA MEDIUM

Omega Medium shank provides ample support to the arch for most dancers. For dancers with pliable ligaments, a medium shank allows them to stand "on top" of their platform with great ease.




SALMON


SIZE	WIDTH	FREE RIBBONS
3 to 8	medium wide extra wide x extra wide	X XX XXX XXXX
		satin or cotton



HIGH WINGS





MEDIUM




FULL SHANK

BOX LOW PROFILE






TEXON



CARDBOARD FIBER 2.0




LEATHER

BINDING : ELASTIC BINDING

OMEGA HARD

Omega Hard shank supports a malleable arch with stretched ligaments. For the best support for this type of arch, a hard shank will provide the most significant support. In addition, the shank must conform to the foot's arch. A three-quarter cut shank provides the utmost contact to the arch for maximum support while "en pointe."



SALMON

SIZE	WIDTH	FREE RIBBONS
3 to 8	medium wide extra wide x extra wide	X XX XXX XXXX
		satin or cotton



HIGH WINGS





HARD




3/4 SHANK

BOX LOW PROFILE






TEXON



CARDBOARD FIBER 2.5



LEATHER

BINDING : ELASTIC BINDING

OMEGA POINTE MORE OPTIONS

The Salmon, Walnut and Carmel colors will match your skin tone.
The White and Black colors will be more adapted to the needs of your dance performances.



SALMON



WHITE



BLACK



WALNUT



CARMEL




If your size does not match our core sizing, you have more size options to order.

	MORE OPTIONS				STOCK ITEMS													
SIZE UK	1	1.5	2	2.5	3	3.5	4	4.5	5	5.5	6	6.5	7	7.5	8			
SIZE EUR	33	33.5	34	35	35.5	36	36.5	37	38	39	39.5	40	41	41.5	42			
SIZE JAPAN	20.4	20.8	21.1	21.8	22.1	22.4	22.8	23.1	24.2	24.9	25.5	25.8	26.4	26.8	27.2			
SIZE US	3.5	4	4.5	5	5.5	6	6.5	7	7.5	8	8.5	9	9.5	10	10.5			

OMEGA REINFORCED HARD


Omega Reinforced Hard shank supports a highly flexible foot with stretched ligaments- either through the development of the arch or born with loose ligaments. A reinforced hard shank will provide the ultimate support to the arch. A half shank is best suited for this type of arch to ensure that the shank will conform entirely to the arch.

SIZE	WIDTH	FREE RIBBONS
3 to 8	medium wide extra wide x extra wide	X XX XXX XXXX
		satin or cotton

HIGH WINGS
REINFORCED HARD
1/2 SHANK

BOX LOW PROFILE



TEXON

POLYCARBONATE

LEATHER

BINDING : ELASTIC BINDING

OMEGA POINTE MORE OPTIONS

The Salmon, Walnut and Carmel colors will match your skin tone.
The White and Black colors will be more adapted to the needs of your dance performances.



If your size does not match our core sizing, you have more size options to order.

	MORE OPTIONS				STOCK ITEMS											
SIZE UK	1	1.5	2	2.5		3	3.5	4	4.5	5	5.5	6	6.5	7	7.5	8
SIZE EUR	33	33.5	34	35		35.5	36	36.5	37	38	39	39.5	40	41	41.5	42
SIZE JAPAN	20.4	20.8	21.1	21.8		22.1	22.4	22.8	23.1	24.2	24.9	25.5	25.8	26.4	26.8	27.2
SIZE US	3.5	4	4.5	5		5.5	6	6.5	7	7.5	8	8.5	9	9.5	10	10.5

La Pointe

LA POINTE SQUARE

By Wear Moi

The **Roman and Greek Square foot** is an ideal foot shape for pointe work, as the first three toes are of equal length and have the most contact with the internal platform of the pointe shoe. Additionally, the external platform of the La Pointe Square offers the broadest platform of all Wear Moi pointe shoes. A broad platform provides the **greatest feeling of security** while "en pointe."

The cut of a **U shape throat** mimics the lines of the square box and is often the choice of dancers worldwide. It contains a cotton drawstring encased in a cotton binding.

The construction of La Pointe Square is in the **turned method** and offers pleats on the bottom front of the shoe and contains a standard crown height with traditional side and heel measurements. A reinforced platform **extends the longevity of this pointe shoe.**

An **embossed leather outsole** marked with a decorative design, including the size, width, and shank strength, provides traction.

La Pointe Square is available with pre-stitched, high-quality **satin or cotton ribbons** free of charge.

La Pointe's Square sizing follows the **UK sizing system.**



Greek-Square Roman

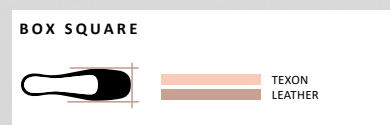
LA POINTE SQUARE EXTRA SOFT

The La Pointe Square Extra Soft shank provides minimal support to the arch and is ideal for dancers transitioning from a demi-pointe shoe to their first pair of pointe shoes. Additionally, this shank is suited for dancers with tight ligaments or an underdeveloped arch.



 SALMON

SIZE	WIDTH	FREE RIBBONS
3 to 7	medium X wide XX extra wide XXX x extra wide XXXX	satin or cotton



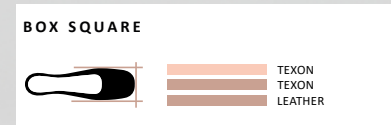
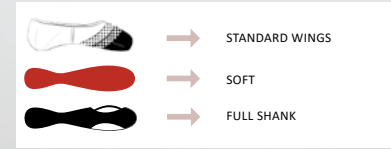
LA POINTE SQUARE SOFT

The La Pointe Square Soft shank provides light support to the arch and is ideal for dancers with tight ligaments or an underdeveloped arch. In most cases, a "beginner" who is starting pointe work will be best served with a soft shank. The minimal support provided by a soft shank will allow the dancer to stretch their ligaments to enable the dancer to stand fully "on top" of their platform. In other cases, a "seasoned" dancer with very tight ligaments may continue to wear a soft shank.



 SALMON

SIZE	WIDTH	FREE RIBBONS
3 to 7	medium X wide XX extra wide XXX x extra wide XXXX	satin or cotton



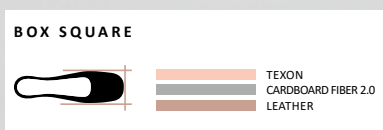
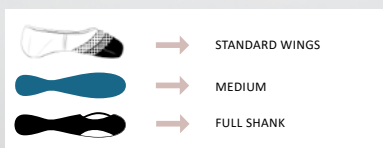
LA POINTE SQUARE MEDIUM

The La Pointe Square Medium shank provides ample support to the arch for most dancers. For dancers with pliable ligaments, a medium shank allows them to stand "on top" of their platform with great ease.



SALMON

SIZE	WIDTH	FREE RIBBONS
3 to 7	medium X wide XX extra wide XXX x extra wide XXXX	satin or cotton



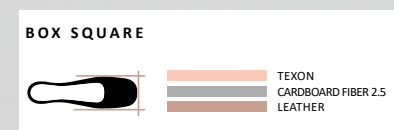
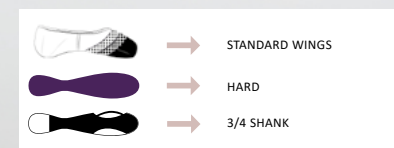
LA POINTE SQUARE HARD

The La Pointe Square Hard shank supports a malleable arch with stretched ligaments. For the best support for this type of arch, a hard shank will provide the most significant support. In addition, the shank must conform to the foot's arch. A three-quarter cut shank provides the utmost contact to the arch for maximum support while "en pointe."



SALMON

SIZE	WIDTH	FREE RIBBONS
3 to 7	medium X wide XX extra wide XXX x extra wide XXXX	satin or cotton



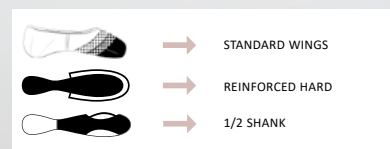
LA POINTE SQUARE REINFORCED HARD

The La Pointe Square Reinforced Hard shank supports a highly flexible foot with stretched ligaments- either through the development of the arch or born with loose ligaments. A reinforced hard shank will provide the ultimate support to the arch. A half shank is best suited for this type of arch to ensure that the shank will conform entirely to the arch.



SALMON

SIZE	WIDTH	FREE RIBBONS
3 to 7	medium X wide XX extra wide XXX x extra wide XXXX	satin or cotton



BOX SQUARE	TEXON POLYCARBONATE LEATHER

MORE OPTIONS

If your ideal combination is not displayed in stock on the previous pages, we have other options on demand. Here's all the pre-defined combinations that you can choose from for the La Pointe Square and the La Pointe Taper models.

01 COLOR

The Salmon, Walnut and Carmel colors will match your skin tone. The White and Black colors will be more adapted to the needs of your dance performances.



02 SIZE

If your size does not match our core sizing, you have more size options to order, ranging from 13 to 9.

	MORE OPTIONS					STOCK ITEMS										MORE OPTIONS			
SIZE UK	13	1	1.5	2	2.5	3	3.5	4	4.5	5	5.5	6	6.5	7	7.5	8	8.5	9	
SIZE EUR	32	33	33.5	34	35	35.5	36	36.5	37	38	39	39.5	40	41	41.5	42	42.5	43	
SIZE JAPAN	19.8	20.4	20.8	21.1	21.8	22.1	22.4	22.8	23.1	24.2	24.9	25.5	25.8	26.4	26.8	27.2	27.5	27.8	
SIZE US	1	3.5	4	4.5	5	5.5	6	6.5	7	7.5	8	8.5	9	9.5	10	10.5	11	11.5	

03 VAMPS



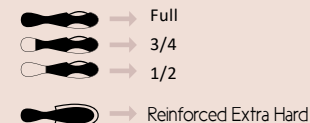
Our La Pointe models have a traditional U-cut vamp. If you prefer to opt for a different line where your foot will be less exposed, you can choose the V-cut option on demand.

04 WIDTH

narrow (N)
medium (X)
wide (XX)
extra wide (XXX)
x extra wide (XXXX)
xx extra wide (XXXXX)

We offer two additional widths on demand.
XXXXX width only available in La Pointe Square.

05 LENGTH & SHANK



Shank and length can be adapted according to your needs.

Extra Soft shank only available in full length

RH and RXH shanks only available in 1/2 length

La Pointe

LA POINTE TAPER

by Wear Moi

The La Pointe Taper is ideally suited for the **Egyptian or Greek-Taper foot**, where the first toe (big toe) predominates, and all other phalanges reduce in length, with the fifth toe (little toe) being the shortest. The last of La Pointe Taper provides a tapered fit on the inside of the shoe for **maximum support**.

The **U throat shape** contain a cotton drawstring encased in a cotton binding.

The construction of La Pointe Taper is in the **turned method** and offers pleats on the bottom front of the shoe and contains a standard crown height with traditional side and heel measurements. The platform's durability is extended by a **reinforcement lining** placed within the box during construction.

An **embossed leather outsole** marked with a decorative design, including the size, width, and shank strength, provides traction.

La Pointe Taper is available with pre-stitched, high-quality **satin or cotton ribbons** free of charge.

La Pointe's Taper sizing follows the **UK sizing system**.



Greek-Taper Egyptian

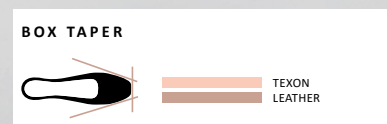
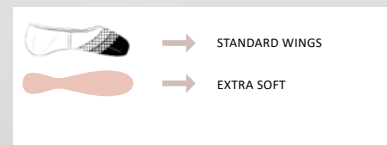
LA POINTE TAPER EXTRA SOFT

The La Pointe Taper Extra Soft shank provides minimal support to the arch and is ideal for dancers transitioning from a demi-pointe shoe to their first pair of pointe shoes. Additionally, this shank is suited for dancers with tight ligaments or an underdeveloped arch.



 SALMON

SIZE	WIDTH	FREE RIBBONS
3 to 7	medium wide extra wide x extra wide	X XX XXX XXXX
		satin or cotton



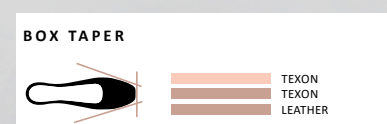
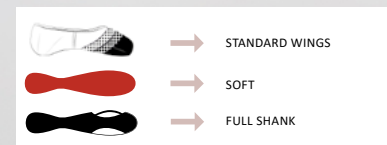
LA POINTE TAPER SOFT

The La Pointe Taper Soft shank provides light support to the arch and is ideal for dancers with tight ligaments or an underdeveloped arch. In most cases, a "beginner" who is starting pointe work will be best served with a soft shank. The minimal support provided by a soft shank will allow the dancer to stretch their ligaments to enable the dancer to stand fully "on top" of their platform. In other cases, a "seasoned" dancer with very tight ligaments may continue to wear a soft shank.



 SALMON

SIZE	WIDTH	FREE RIBBONS
3 to 7	medium wide extra wide x extra wide	X XX XXX XXXX
		satin or cotton



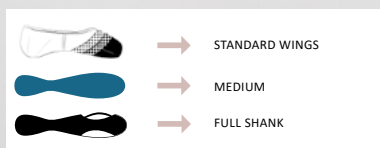
LA POINTE TAPER MEDIUM

The La Pointe Taper Medium shank provides ample support to the arch for most dancers. For dancers with pliable ligaments, a medium shank allows them to stand "on top" of their platform with great ease.



 SALMON

SIZE	WIDTH	FREE RIBBONS
3 to 7	medium X wide XX extra wide XXX x extra wide XXXX	satin or cotton



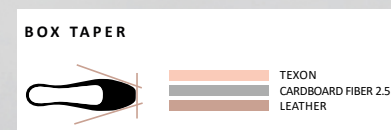
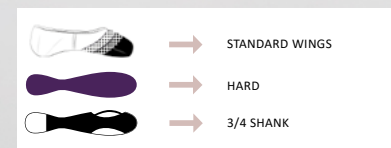
LA POINTE TAPER HARD

The La Pointe Taper Hard shank supports a malleable arch with stretched ligaments. For the best support for this type of arch, a hard shank will provide the most significant support. In addition, the shank must conform to the foot's arch. A three-quarter cut shank provides the utmost contact to the arch for maximum support while "en pointe."



 SALMON

SIZE	WIDTH	FREE RIBBONS
3 to 7	medium X wide XX extra wide XXX x extra wide XXXX	satin or cotton






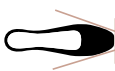
LA POINTE TAPER REINFORCED HARD

The La Pointe Taper Reinforced Hard shank supports a highly flexible foot with stretched ligaments - either through the development of the arch or born with loose ligaments. A reinforced hard shank will provide the ultimate support to the arch. A half shank is best suited for this type of arch to ensure that the shank will conform entirely to the arch.

SALMON

SIZE	WIDTH	FREE RIBBONS
3 to 7	medium X wide XX extra wide XXX x extra wide XXXX	satin or cotton

	→	STANDARD WINGS
	→	REINFORCED HARD
	→	1/2 SHANK

BOX TAPER	
	TEXON POLYCARBONATE LEATHER

MORE OPTIONS

If your ideal combination is not displayed in stock on the previous pages, we have other options on demand. Here's all the pre-defined combinations that you can choose from for the La Pointe Square and the La Pointe Taper models.

01 COLOR

The Salmon, Walnut and Carmel colors will match your skin tone. The White and Black colors will be more adapted to the needs of your dance performances.



02 SIZE

If your size does not match our core sizing, you have more size options to order, ranging from 13 to 9.

	MORE OPTIONS					STOCK ITEMS												MORE OPTIONS			
SIZE UK	13	1	1.5	2	2.5	3	3.5	4	4.5	5	5.5	6	6.5	7	7.5	8	8.5	9			
SIZE EUR	32	33	33.5	34	35	35.5	36	36.5	37	38	39	39.5	40	41	41.5	42	42.5	43			
SIZE JAPAN	19.8	20.4	20.8	21.1	21.8	22.1	22.4	22.8	23.1	24.2	24.9	25.5	25.8	26.4	26.8	27.2	27.5	27.8			
SIZE US	1	3.5	4	4.5	5	5.5	6	6.5	7	7.5	8	8.5	9	9.5	10	10.5	11	11.5			

03 VAMPS



Our La Pointe models have a traditional U-cut vamp. If you prefer to opt for a different line where your foot will be less exposed, you can choose the V-cut option on demand.

04 WIDTH

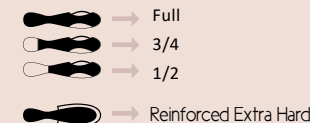
narrow (N)
medium (X)
wide (XX)

extra wide (XXX)
x extra wide (XXXX)

We offer two additional widths on demand.

XXXXX width only available in La Pointe Square.

05 LENGTH & SHANK



Shank and length can be adapted according to your needs.

Extra Soft shank only available in full length

RH and RXH shanks only available in 1/2 length

MAKING YOUR OWN CUSTOM-TAILORED SHOES

Wear Moi addresses dancers' individual needs through its Made to Measure department. Be it structural needs of the foot or esthetic preferences visually, "Custom-tailored" pointe shoes can make all the difference. Many dancers from pre-professional to ballerinas of renowned ballet companies, already benefit from this service.

The most requested alterations to the upper include **higher or lower vamp, side, and or heel measurements**. **Bindings** can be produced with an elasticized casing, or a cotton drawstring encased in a cotton binding- the **drawstring may be placed on inside** if requested. For dancers with a narrower heel in proportion to the ball of the foot, **a pin heel** may be beneficial. Shanks may be modified at the back of the shank. Lateral support at the ball of the foot may be adjusted with **lower, higher, firmer, or lighter wings**.

For your total satisfaction, we will work with you to find the pointe shoes that best meet your needs. And we are at your side to support you as you pursue our shared passion, dancing without limits...

Wear Moi Custom Tailored Pointe Shoes

Date : ... / ... / ...
Fitter's name :

Name :
Address :
Phone :
E-Mail :

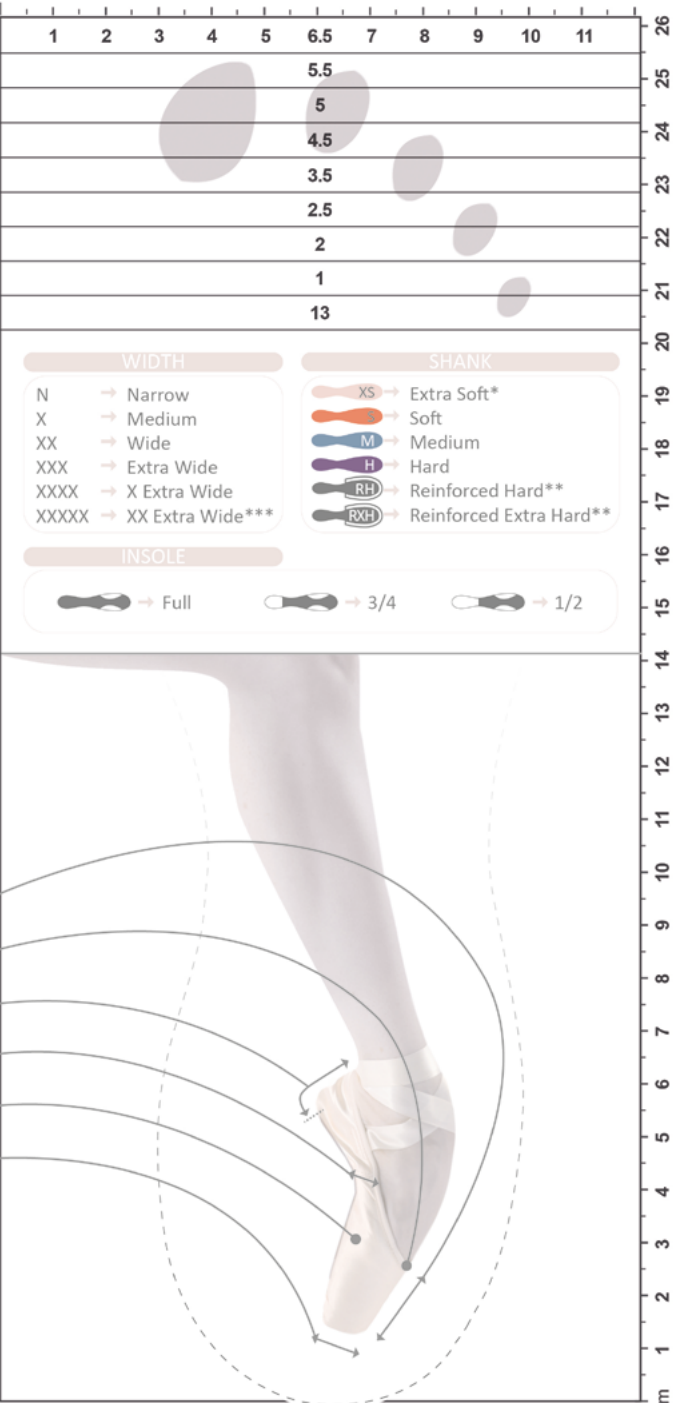
La Pointe TAPPER ☐ ALFA ☐
La Pointe SQUARE ☐ OMEGA ☐

SHOE SIZE	
WIDTH	N X XX XXX XXXX XXXXX
SHANK	XS S M H RH RXH
INSOLE	F 3/4 1/2
DRAWSTRING	ELASTIC COTTON
BORDER**	ELASTICATED*** CLASSIC
RIBBON	SATIN COTTON NO
VAMP*	
CUT**	U V
HEEL*	
SIDE*	
WINGS**	STANDARD HIGH
PLATFORM*	

*Measurement in millimeter **La Pointe Only ***No Drawstring

Comments :

Mesures





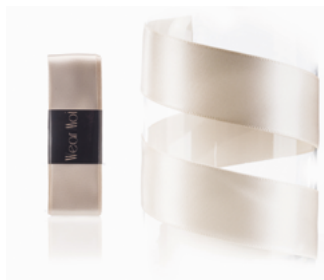
SHOE ACCESSORIES

DIV 56



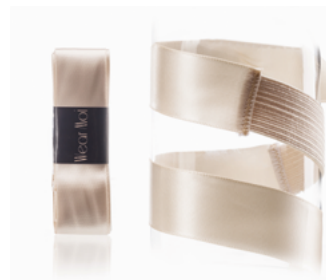
Pre-cut pointe shoe / ballet shoe cotton ribbon.
Length : 2 m / 2.20 yards per unit
Width : 2.2 cm / 7/8" wide

DIV 57



Pre-cut pointe shoe / ballet shoe satin ribbon.
Length : 2 m / 2.20 yards per unit
Width : 2.3 cm / 7/8" wide

DIV 61



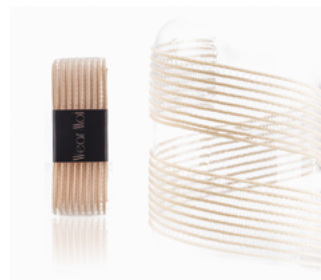
Satin ribbon with stretch insert.
Takes the stress off your heel tendon. 4 per set
Length : 57 cm / 22" per unit
Width : 2.3 cm / 7/8" wide

DIV 58



Pre-cut pointe shoe elastic.
Length : 50 cm / 20" per unit
Width : 1.9 cm / 3/4" wide

DIV 59



Pre-cut pointe shoe invisible elastic.
Length : 50 cm / 20" per unit
Width : 2.5 cm / 1" wide

DIV 52



Thin and flexible silicone toe pads. Form perfectly to the foot allowing a dancer to truly feel the floor for proper technique while worn.

DIV 15



Cotton ribbon, perfect for canvas ballet shoes, great for the matte look.
Length : 50 m / 55 yards per roll
Width : 2.2 cm / 7/8" wide

DIV 31



Satin ribbon in roll.
Length : 80 m / 87 yards per roll
Width : 2.3 cm / 7/8" wide

DIV 55



Pointe Shoe elastic in roll.
Length : 20 m / 22 yards per roll
Width : 1.9 cm / 3/4" wide

DIV 54



Wear Moi invisible elastic in roll.
Length : 25 m / 27 yards per roll
Width : 2.5 cm / 1" wide

DIV 13



Rock rosin, a real dancers helper.
Weight : 400g / 0.88 Pound



DIV 01

Footed matte semi-opaque ballet tights, with soft, comfortable Microfiber Lycra waist band, and color-matched gusset (gusset is excluded in black). Super-stretchy, our ballet tights' construction offers unrivalled fit and performance. It holds shapes and washes well without shrinking or fading. Perfect for class, rehearsal and performance.
Microfiber

Children : 4/6 - 6/8 - 8/10 - 10/12
Ladies : XS - S - M - L



TIGHTS



DIV 03

Convertible matte semi-opaque ballet tights, with soft comfortable Microfiber Lycra waist band, and color-matched gusset. Super-stretchy, the construction of our ballet tights offers unrivalled fit and performance. It holds shapes and washes well, without shrinking or fading. Perfect for class, rehearsal and performance. Microfiber

Children : 4/8 - 8/12 - 12/14
Ladies : S/M - L/XL



DIV 60

Footless matte semi-opaque ballet tights, with soft comfortable Microfiber Lycra waist band and color-matched gusset (gusset is excluded in black). Super-stretchy, the construction of our ballet tights offers unrivalled fit and performance. It holds shapes and washes well, without shrinking or fading. Perfect for class, rehearsal and performance. Microfiber

Children : 6/8 - 8/10 - 10/12
Ladies : XS - S - M - L





« Made by dancers,
for dancers »

Wear Mei
Designed in France
ACCESSORIES

DIV 66

Height : 30 cm
Width : 50 cm

This multi-compartment dance tote bag incorporates slimming waves with practical outer compartments that close with magnetic studs for easy access. Center compartment closes with zipper for security. Leather handles and detail. Wear Moi tutu keychain included. Microfiber- Leather

BLACK
PRUNE



DIV 92

Height : 32 cm
Width : 36 cm

A large size quilted tote bag, honeycomb textured, with inside compartment. Satin lining and drawstring cinch closure. Quilted Perforated Fabric

BLACK



DIV 93

Height : 23 cm
Width : 27 cm

A small size quilted tote bag, honeycomb textured, with inside compartment. Satin lining and drawstring cinch closure. Quilted Perforated Fabric

BLACK

DIV 94

Height : 13 cm
Width : 12 cm

Quilted honeycomb textured accessory pouch with satin lining and zippered top. Great for keeping all your hair accessories. Quilted Perforated Fabric

BLACK

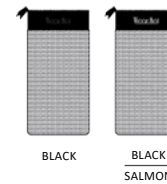




DIV 79

Zippered bag made from breathable mesh that is perfect for your ballet shoes.
Honeycomb Fabric - Canvas

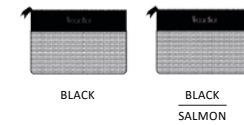
SIZE :
Height : 25 cm
Width : 13 cm



DIV 80

Small accessory bag featuring breathable mesh and a zippered top for security.
Honeycomb Fabric - Canvas

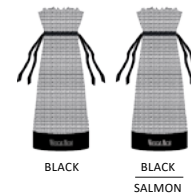
SIZE :
Height : 12 cm
Width : 18 cm



DIV 81

Classic breathable mesh bag with drawstrings, perfect for keeping your pointe shoes pristine.
Honeycomb Fabric - Canvas

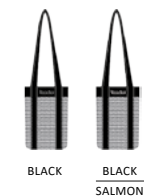
SIZE :
Height : 33 cm
Width : 12 cm



DIV 82

This one of a kind pointe shoe bag was made exclusively for the avid ballet dancer. Store up to four pairs of pointe shoes in the breathable compartments. Features long shoulder straps for extra comfort and carrying ease.
Honeycomb Fabric - Canvas

SIZE :
Height : 22 cm
Width : 16 cm



DIV 118

Dance Scrunchies
Flocked Microfiber scrunchies.
One Size
Printed Microfiber



DIV 108

One Size- Stretch Lace scrunchies

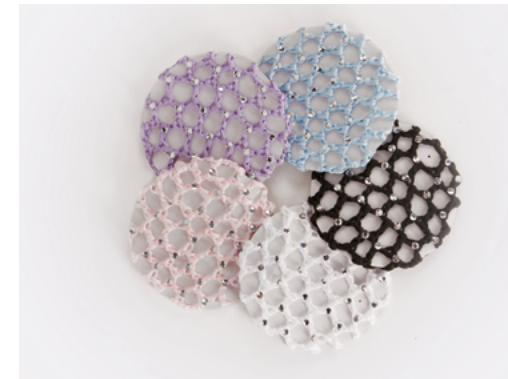


HAIR ACCESSORIES



DIV 42

One Size- Microfiber scrunchies match all Wear Moi colors perfectly. Microfiber.



DIV 97

Bun cover with faux rhinestones. High quality materials and secure elastic. Polythylene- Acrylic stone





DIV 63

Tutu keychain with rhinestones.
Leather- Tulle



BLACK
PACIFIC



BLACK
PEACH



BLACK
LILAC



DIV 62

Tutu keychain with rhinestones.
Satin- Tulle



BLACK
SALMON

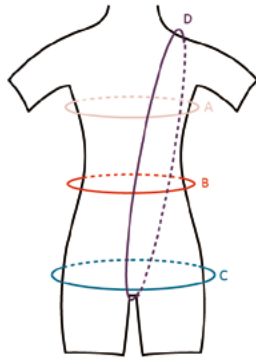
DIV 88

Tutu keychain with rhinestones.
Leather- Tulle



SALMON
WHITE

SIZE CHART - METRIC MEASUREMENT



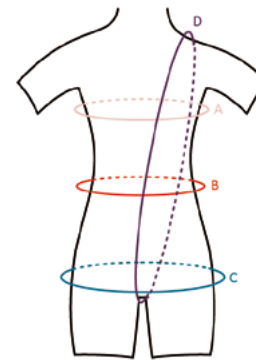
GIRL SIZES	AGE 2/4	AGE 4/6	AGE 6/8	AGE 8/10	AGE 10/12	AGE 12/14
Height (Size)	90 - 105 cm	100 - 115 cm	110 - 125 cm	120 - 135 cm	130 - 145 cm	140 - 155 cm
WEIGHT:	10 - 15 kg	15 - 20 kg	17 - 27 kg	25 - 35 kg	30 - 40 kg	35 - 45 kg
A : Chest Width	50 - 55 cm	55 - 60 cm	60 - 65 cm	65 - 70 cm	70 - 75 cm	75 - 80 cm
B : Waist	45 - 50 cm	49 - 54 cm	50 - 55 cm	52 - 57 cm	53 - 58 cm	55 - 60 cm
C : Hips	50 - 55 cm	55 - 60 cm	60 - 65 cm	65 - 70 cm	72 - 78 cm	78 - 83 cm
D : Girth	80 - 90 cm	90 - 100 cm	100 - 110 cm	110 - 120 cm	115 - 125 cm	125 - 135 cm

WOMEN SIZES	XS	S	M	L	XL	XXL	XXXL
Height (Size)	150 - 165 cm	160 - 175 cm	165 - 175 cm	165 - 180 cm	165 - 180 cm	165 - 185 cm	170 - 190 cm
WEIGHT:	40 - 50 kg	45 - 55 kg	50 - 60 kg	60 - 70 kg	70 - 80 kg	80 - 90 kg	90 - 100 kg
A : Chest Width	80 - 85 cm	85 - 90 cm	90 - 95 cm	95 - 100 cm	100 - 105 cm	105 - 110 cm	110 - 115 cm
B : Waist	55 - 60 cm	60 - 65 cm	65 - 70 cm	70 - 75 cm	75 - 80 cm	80 - 85 cm	85 - 90 cm
C : Hips	82 - 88 cm	87 - 92 cm	92 - 97 cm	95 - 100 cm	100 - 105 cm	105 - 110 cm	110 - 115 cm
D : Girth	132 - 140 cm	140 - 148 cm	148 - 156 cm	155 - 164 cm	164 - 172 cm	168 - 176 cm	175 - 180 cm

BOYS SIZES	AGE 2/4	AGE 4/6	AGE 6/8	AGE 8/10	AGE 10/12	AGE 12/14
Height (Size)		100 - 120 cm	113 - 133 cm	124 - 144 cm	135 - 155 cm	140 - 165 cm
WEIGHT:		15 - 20 kg	20 - 27 kg	25 - 35 kg	30 - 40 kg	35 - 45 kg
A : Chest Width		55 - 60 cm	60 - 65 cm	64 - 69 cm	68 - 75 cm	72 - 79 cm
B : Waist		52 - 57 cm	56 - 55 cm	58 - 63 cm	60 - 65 cm	63 - 68 cm
C : Hips		55 - 60 cm	60 - 65 cm	65 - 70 cm	71 - 78 cm	75 - 80 cm
D : Girth		90 - 100 cm	100 - 110 cm	110 - 120 cm	115 - 125 cm	125 - 135 cm

MEN SIZES	XS	S	M	L	XL
Height (Size)	155 - 170 cm	160 - 175 cm	165 - 180 cm	170 - 185 cm	170 - 195 cm
WEIGHT:	45 - 55 kg	55 - 65 kg	65 - 75 kg	75 - 85 kg	85 - 95 kg
A : Chest Width	76 - 83 cm	83 - 91 cm	91 - 97 cm	97 - 104 cm	104 - 110 cm
B : Waist	65 - 70 cm	70 - 75 cm	75 - 80 cm	80 - 85 cm	85 - 90 cm
C : Hips	80 - 85 cm	85 - 90 cm	90 - 95 cm	95 - 100 cm	100 - 105 cm
D : Girth	130 - 145 cm	140 - 160 cm	145 - 165 cm	150 - 170 cm	155 - 170 cm

SIZE CHART - IMPERIAL MEASUREMENT



GIRL SIZES	AGE 2/4	AGE 4/6	AGE 6/8	AGE 8/10	AGE 10/12	AGE 12/14
Height (Size)	3'1" - 3'5"	3'3" - 3'9"	3'7" - 4'1"	3'11" - 4'5"	4'3" - 4'9"	4'7" - 5'1"
WEIGHT:	22 - 33 lbs	33 - 44 lbs	37 - 59 lbs	55 - 77 lbs	66 - 88 lbs	77 - 99 lbs
A : Chest Width	19 - 21"	21 - 23"	23 - 25"	25 - 27"	27 - 29"	29 - 31"
B : Waist	18 - 20"	19 - 21"	20 - 22"	21 - 23"	21 - 23"	22 - 24"
C : Hips	20 - 22"	22 - 24"	24 - 26"	26 - 28"	29 - 31"	31 - 33"
D : Girth	31 - 35"	35 - 39"	39 - 43"	43 - 47"	45 - 49"	49 - 53"

WOMEN SIZES	XS	S	M	L	XL	XXL	XXXL
Height (Size)	4'11" - 5'5"	5'3" - 5'9"	5'5" - 5'9"	5'5" - 5'11"	5'5" - 5'11"	5'5" - 6'	5'7" - 7'1"
WEIGHT:	88 - 110 lbs	99 - 121 lbs	110 - 132 lbs	132 - 154 lbs	154 - 176 lbs	176 - 198 lbs	198 - 220 lbs
A : Chest Width	31 - 33"	33 - 35"	35 - 37"	37 - 39"	39 - 41"	41 - 43"	43 - 45"
B : Waist	21 - 24"	24 - 26"	26 - 28"	28 - 30"	30 - 32"	32 - 34"	33 - 35"
C : Hips	33 - 35"	35 - 37"	37 - 39"	38 - 40"	39 - 41"	41 - 43"	43 - 45"
D : Girth	52 - 55"	55 - 58"	58 - 62"	62 - 65"	65 - 68"	66 - 69"	68 - 71"

BOYS SIZES	AGE 2/4	AGE 4/6	AGE 6/8	AGE 8/10	AGE 10/12	AGE 12/14
Height (Size)		3'3" - 3'11"	3'9" - 4'4"	4'1" - 4'9"	4'5" - 5'1"	4'7" - 5'5"
WEIGHT:		33 - 44 lbs	44 - 60 lbs	55 - 77 lbs	66 - 88 lbs	77 - 99 lbs
A : Chest Width		22 - 24"	24 - 26"	25 - 27"	27 - 29"	29 - 31"
B : Waist		21 - 23"	22 - 24"	23 - 25"	25 - 26"	25 - 27"
C : Hips		22 - 24"	24 - 26"	26 - 28"	28 - 30"	30 - 32"
D : Girth		35 - 39"	39 - 43"	43 - 47"	45 - 49"	49 - 53"

MEN SIZES	XS	S	M	L	XL
Height (Size)	5'1" - 5'7"	5'3" - 5'9"	5'5" - 5'11"	5'7" - 6'1"	5'7" - 6'5"
WEIGHT:	99 - 121 lbs	121 - 143 lbs	143 - 165 lbs	165 - 187 lbs	187 - 209 lbs
A : Chest Width	31 - 33"	33 - 36"	36 - 38"	38 - 41"	41 - 44"
B : Waist	26 - 28"	28 - 30"	30 - 32"	32 - 34"	34 - 36"
C : Hips	32 - 34"	34 - 36"	36 - 38"	38 - 40"	40 - 42"
D : Girth	51 - 57"	55 - 62"	57 - 65"	59 - 67"	61 - 67"

SIZE CHART - TIGHTS

METRIC MEASUREMENT

DIV01 – DIV60

SIZES	4/6	6/8	8/10	10/12	XS	S	M	L
HEIGHT IN CM	100 - 115	110 - 125	120 - 135	130 - 145	150 - 165	160 - 175	165 - 175	165 - 180
WEIGHT IN KG	15 - 20	17 - 27	25 - 35	30 - 40	40 - 50	45 - 55	50 - 60	60 - 70

DIV03 – PREMIERE FOOTED TIGHTS – PREMIERE CONVERTIBLE TIGHTS

SIZES	4/8	8/12	12/14	S/M	L/XL
HEIGHT IN CM	100 - 125	120 - 145	140 - 155	160 - 175	165 - 180
WEIGHT IN KG	15 - 27	25 - 40	35 - 45	45 - 60	60 - 80

IMPERIAL MEASUREMENT

DIV01 – DIV60

SIZES	4/6	6/8	8/10	10/12	XS	S	M	L
HEIGHT IN INCHES	3'3" - 3'9"	3'7" - 4'1"	3'11" - 4'5"	4'3" - 4'9"	4'11" - 5'5"	5'3" - 5'9"	5'5" - 5'9"	5'5" - 5'11"
WEIGHT IN LBS	33 - 44	37 - 59	55 - 77	66 - 88	88 - 110	99 - 121	110 - 132	132 - 154

DIV03 – PREMIERE FOOTED TIGHTS – PREMIERE CONVERTIBLE TIGHTS

SIZES	4/8	8/12	12/14	S/M	L/XL
HEIGHT IN INCHES	3'3" - 4'1"	3'11" - 4'9"	4'7" - 5'1"	5'3" - 5'9"	5'5" - 5'11"
WEIGHT IN LBS	33 - 59	55 - 88	77 - 99	99 - 132	132 - 176

Wear Moi

375 Avenue St Just

83130 La Garde – FRANCE

Phone : +33 (0) 498 01 6000 – Fax : +33 (0) 498 01 6001

Email : info@wearmoi.com

Wear Moi (North, Central and South America)

3352 N Broadway – Chicago IL 60657 – USA

Phone : +1 (773) 850 3119 – Fax : +1 (773) 901 2167

Email : usa@wearmoi.com

SIZE CHART - POINTE SHOES

LA POINTE SQUARE & LA POINTE TAPER

SIZE UK	13	1	1.5	2	2.5	3	3.5	4	4.5	5	5.5	6	6.5	7	7.5	8	8.5	9
SIZE EUR	32	33	33.5	34	35	35.5	36	36.5	37	38	39	39.5	40	41	41.5	42	42.5	43
SIZE JAPAN	19,8	20,4	20,8	21,1	21,8	22,1	22,4	22,8	23,1	24,2	24,9	25,5	25,8	26,4	26,8	27,2	27,5	27,8
SIZE US	1	3.5	4	4.5	5	5.5	6	6.5	7	7.5	8	8.5	9	9.5	10	10.5	11	11.5

DEMI-POINTE

SIZE UK	13	1	1.5	2	2.5	3	3.5	4	4.5	5	5.5	6	6.5	7	7.5	8	8.5	9
SIZE EUR	32	33	33.5	34	35	35.5	36	36.5	37	38	39	39.5	40	41	41.5	42	42.5	43
SIZE JAPAN	19,8	20,4	20,8	21,1	21,8	22,1	22,4	22,8	23,1	24,2	24,9	25,5	25,8	26,4	26,8	27,2	27,5	27,8
SIZE US	1	3.5	4	4.5	5	5.5	6	6.5	7	7.5	8	8.5	9	9.5	10	10.5	11	11.5

ALFA & OMEGA POINTE SHOES

SIZE UK	3	3.5	4	4.5	5	5.5	6	6.5	7	7.5	8
SIZE EUR	35.5	36	36.5	37	38	39	39.5	40	41	41.5	42
SIZE JAPAN	22,1	22,4	22,8	23,1	24,2	24,9	25,5	25,8	26,4	26,8	27,2
SIZE US	5.5	6	6.5	7	7.5	8	8.5	9	9.5	10	10.5

SIZE CHART - BALLET SHOES

SOFT SHOES

Stretch Canvas Soft Shoes : We suggest opting for two sizes larger than your regular fit. If you want more support, sticking to your usual size or going one size up would be ideal.

EURO	23	24	25	26	27	28	29	30	31	32	33
CHILD US	7	8	8,5	9	10	10,5	11	12	12,5	13,5	14
CHILD UK	6	7	8	8,5	9	10	11	11,5	12,5	13	1
CHILD JAPAN	14,3	15	15,6	16,3	17	17,6	18,3	19	19,6	20,3	21

EURO	34	35	36	37	38	39	40	41	42	43	44	45	46
WOMEN US	3	4	5	5,5	6,5	7	8	9	9,5	10	11	12	13
WOMEN UK	2	2,5	3,5	4	5	5,5	6,5	7,5	8	9	9,5	10	11
WOMEN JAPAN	21,6	22,3	23	23,6	24,3	25	25,6	26,3	27	27,6	28,3	29	29,6

EURO	34	35	36	37	38	39	40	41	42	43	44	45	46	47	48	49	50
MEN US	2,5	3,5	4,5	5	6	6,5	7	8	8,5	9	10	11	12	12,5	13	14	15
MEN UK	2	2,5	3,5	4	5	5,5	6,5	7,5	8	9	9,5	10	11	12	12,5	13	14
MEN JAPAN	21,6	22,3	23	23,6	24,3	25	25,6	26,3	27	27,6	28,3	29	29,6	30,3	31	31,6	32,3

TURNER SHOES

	XS		S		M		L		XL	
EURO	34	35	36	37	38	39	40	41	42	43
US	4	4.5	5.5	6.5	7	7.5	8	8.5	9	9.5
UK	2	2.5	3.5	4.5	5	5.5	6.5	7	8	9
JAPAN	21	21.5	22	22.5	23.5	24.5	25.5	26	26.5	27

Wear Mei

Designed in France