



Wear Mei
Designed in France
FASHION UNIFORMS
2023

« Made by dancers,
for dancers »



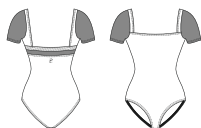
Collection
Eclat de Fleurs



ACANTE

Children : 4/6 - 6/8 - 8/10 - 10/12 - 12/14
Ladies : XS - S - M - L

This short-sleeved leotard has a straight neckline in front and in back. It is cut from extra-soft microfiber featuring a whimsical floral print and transparent stretch tulle. The tulle adorns the sleeves and a thin border in the back. This ballet leotard creates a curved silhouette. Printed Microfiber - Stretch Tulle - Front lining



COLCHIC

Children : 4/6 - 6/8 - 8/10 - 10/12 - 12/14
Ladies : XS - S - M - L

This ballet leotard in extra-soft microfiber will be a valuable addition to your wardrobe. The leotard features a floral print and a classic cut in the front with a band of transparent stretch tulle along the top on the back side. The camisole style and cut will shape your silhouette. Printed Microfiber - Stretch Tulle- Front lining





Eclat

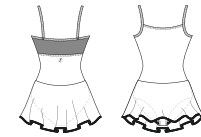
CAMELIA

Children : 4/6 - 6/8 - 8/10 - 10/12 - 12/14

Ladies : XS - S - M - L

This printed microfiber style delivers a comfortable fit and a shapely silhouette. The transparent stretch tulle panel along the backline and the camisole straps lend the style even more elegance. The Camelia skirted leotard will be a hit in your dance class and its floral pattern will remind you of a lush garden of anemones.

Printed Microfiber - Stretch Tulle - Front lining



BALSAM

Children : 4/8 - 8/12

Ladies : XS/S - M/L

This skirt in a microfiber floral print feels great to touch. It has an elastic waistband to ensure it stays put during barre and center exercises. Rest assured this skirt will bring a touch of finesse to your ballet lessons. Bonus feature: Save precious time with this pull-on skirt!



de Fleurs

FRESIA

Ladies : XS - S - M - L

Fresia is a long-sleeved leotard with a wide neckline in front and at the back. Its printed microfiber delicately evokes a magnificent anemone garden. You will cut an elegant silhouette without sacrificing comfort, even when you train in cold temperatures. The backline and the sleeves of this leotard are made of transparent stretch tulle to highlight every last detail of your movements. Printed Microfiber - Stretch Tulle - Front lining



LONICERA

Ladies : XS/S - M/L

Lonicera is a microfiber skirt with a floral pattern. It will inject some whimsy into your dance ensemble! It is medium length, but longer at the back than in front. The skirt has finished edges at the waist and a pretty little bow in the middle of the waistband at the back. This pull-on skirt is soft and comfortable. Printed Microfiber





Collection
Mademoiselle



CIRNUM

Children : 6/8 - 8/10 - 10/12 - 12/14

Ladies : XS - S - M - L

This floral patterned leotard is very graceful. The tulle-covered microfiber panel over the breast creates an empire cut with several pinches for a delicate effect. The panel creates effective support for the bust. This camisole leotard is made from our elastane microfiber and embroidered stretch tulle. The back features tulle all the way to the waistline to reveal your skin.

Bonus feature: Our empire cut gives your bust reliable support!
Microfiber- Embroidered Stretch Tulle- Front lining



PINK LILAC PACIFIC LIGHT GREY ROSE



LOBELIA

Children : 4/8 - 8/12

Ladies : XS/S - M/L

This short ballet skirt in stretch tulle features embroidered floral motifs and a fully elasticized waistband. It perfectly complements the leotards in the line, but would also contrast beautifully with a solid leotard in the same color as the embroidery.

Bonus feature: Save precious time with this pull-on skirt!

Embroidered Stretch Tulle



MIOSOTIS

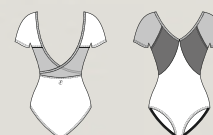
Children : 6/8 - 8/10 - 10/12 - 12/14

Ladies : XS - S - M - L

This short-sleeved leotard features a lovely V-shape in the front and back. A transparent tulle panel laid in crossover creates a sophisticated impression. The front, the backs of the sleeves, the lower panel and the bottom of the leotard are made of solid-colored elastane microfiber. Embroidered tulle is layered over the microfiber on the bust and is used on its own for a transparent effect on the fronts of the sleeves.

This ballet leotard embodies the grace of a ballerina with the delicateness of its colors, the tulle and the floral pattern.

Microfiber- Embroidered Stretch Tulle- Front lining



*Embodies the grace
of a ballerina with the
delicateness of its colors, the
tulle and the floral pattern*





ALYSON



ALYSON

Children : 6/8 - 8/10 - 10/12 - 12/14

Ladies : XS - S - M - L

This skirted leotard made from elastane microfiber, stretch tulle and embroidered stretch tulle is perfect for your dance classes. The fabric is quite pleasant and you will love the cut. This skirted leotard has double straps that flow into transparent tulle panels which are joined to the sweetheart neckline in front and the tapered shape at the back. The two-fabric skirt is made of transparent tulle in front and embroidered transparent tulle at the back.

Microfiber- Embroidered Stretch Tulle- Stretch tulle- Front lining





CYPELLA

Ladies : XS/S - M/L

This asymmetrical ballet skirt is short in front and medium length at the back. The pull-on style is made from stretch tulle that has been embroidered all over with tiny flowers for a stunning effect. It has a finished waistband with a tiny bow sewn at the center at the back. This style will be great with a leotard from the same line or a solid leotard that matches the embroidery or contrast trim at the waist.

Bonus feature: Save precious time with this pull-on skirt!

Microfiber - Embroidered Stretch Tulle



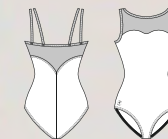
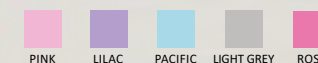
BELMINE

Children : 6/8 - 8/10 - 10/12 - 12/14

Ladies : XS - S - M - L

This extremely elegant double strapped camisole leotard lives somewhere between lingerie and fashion. Transparent embroidered tulle connects the straps to the sweetheart neckline in front and to the top of the backline. The back is further accentuated by the tapered tulle panel. This leotard is cut from our elastane microfiber and paired with embroidered stretch tulle whose transparency creates a contrast with your skin.

Microfiber - Embroidered Stretch Tulle - Front lining



SORAIA

Capturing the freshness of a single moment, this collection is sure to draw you in. This flowered skirted leotard with its short sleeves and its two delicate fabrics will make you shine.

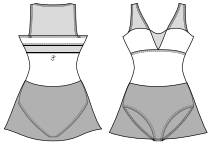




SORAIA

Children : 6/8 - 8/10 - 10/12 - 12/14
Ladies : XS - S - M - L

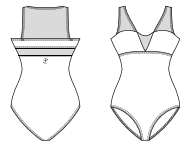
Fancy 3-fabric leotard-skirt combo. Solid color microfiber and flocked sheer stretch tulle yokes crossing on the upper body. Heart-shaped neckline. Sheer tulle skirt. Microfiber - Flocked Stretch Tulle - Stretch Tulle- Front lining



HESTIA

Children : 6/8 - 8/10 - 10/12 - 12/14
Ladies : XS - S - M - L

Fancy 2-fabric leotard. Solid color microfiber and flocked stretch tulle yokes crossing on the upper body. Heart-shaped neckline. Microfiber - Flocked Stretch Tulle- Front lining



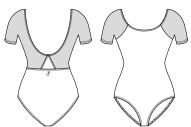


ZENON

Children : 6/8 - 8/10 - 10/12 - 12/14

Ladies : XS - S - M - L

2-fabric short sleeve leotard. Raglan-sleeve, no armhole or shoulder seam. Small triangle solid color microfiber yoke in the back.
Microfiber- Flocked Stretch Tulle- Front lining



TINA

Children : 4/8 - 8/12

Ladies : XS/S - M/L

Short skirt in fancy sheer stretch tulle with flocked flower-pattern. Black microfiber elastic waist, detailed with a small bow in the middle of the back.
Microfiber- Flocked Stretch Tulle





IBERIS

Ladies : XS - S - M - L

Long-sleeve flocked sheer stretch tulle top with V-neck cut on front and back. Flocked Stretch Tulle



DRYADES

Ladies : XS/S - M/L

Medium-length skirt in fancy sheer stretch tulle with flocked flower-pattern. Black microfiber elastic waist, detailed with a small bow in the middle of the back. Microfiber - Flocked Stretch Tulle



*Expand your movements with our fashion uniforms:
trendy and timeless pieces,
available in a delicate color palette*

CANNELLE - MAGNOLIA



CANNELLE



CANNELLE

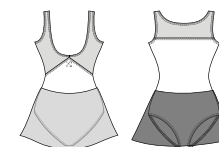


CANNELLE

Children : 4/6 - 6/8 - 8/10 - 10/12 - 12/14

Ladies : XS - S - M - L

Medium strapped dress featuring floral motifs printed on stretch veil with fine opaque lines raised above bust and an open back. Material patterns are incorporated in attached skirt with solid tulle in front and fancy veil in back. Microfiber- Veil Striped Stretch Printed - Stretch Tulle- Front lining



PEACH LILAC PACIFIC BLACK



ABELIA

Children : 4/8 - 8/12
Ladies : XS/S - M/L

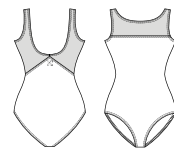
Elasticated waist skirt entirely composed of floral motifs printed on a stretch veil playing transparency with thin opaque stripes.
Veil Striped Stretch Printed



AZALEE

Children : 4/6 - 6/8 - 8/10 - 10/12 - 12/14
Ladies : XS - S - M - L

Medium strapped leotard featuring floral motifs printed on stretch veil with fine opaque lines raised above bust and an open back.
Microfiber- Veil Striped Stretch Printed - Front lining



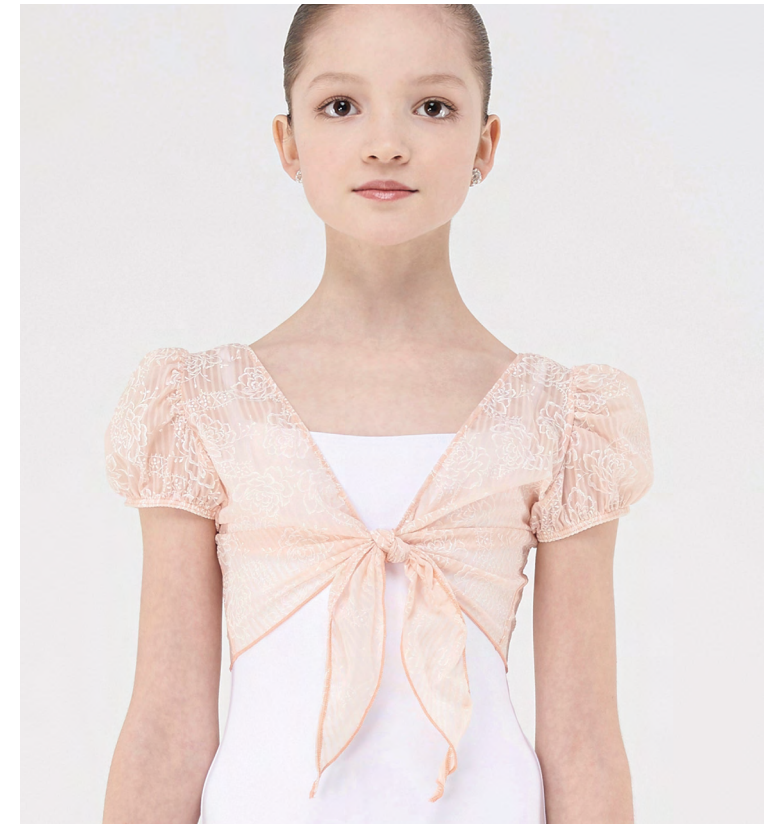
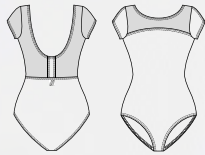
*The perfect balance between
subtlety and originality!*



CARLINE

Children : 4/6 - 6/8 - 8/10 - 10/12 - 12/14
 Ladies : XS - S - M - L

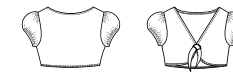
Short sleeved leotard with floral motifs printed on transparent stretch veil with fine opaque lines raised above bust, and up to waist on back. Microfiber - Veil Striped Stretch Printed - Front lining



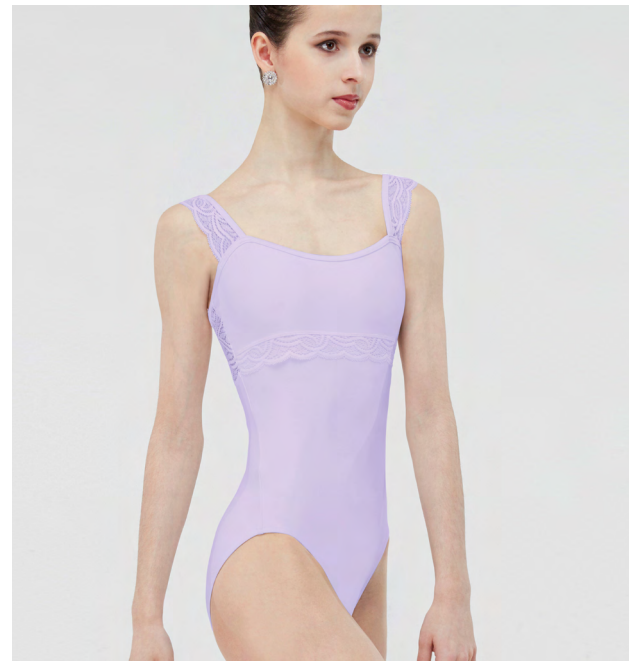
MAGNOLIA

Children : 4/8 - 8/12
 Ladies : XS/S - M/L

Short balloon sleeved cropped cardigan with floral motifs printed on a stretch veil with fine opaque lines neatly gathered to tie in front. Veil Striped Stretch Printed







ERINE

Children : 6/8 - 8/10 - 10/12 - 12/14
Ladies : XS - S - M - L

Tank leotard with a scalloped trim lace overlay.
Microfiber - Stretch Lace- Front lining



EVIDENCE

Children : 6/8 - 8/10 - 10/12 - 12/14
Ladies : XS - S - M - L

A tank-style camisole leotard with plunging V-shaped back, with a delicate lace trim. Microfiber - Stretch Lace- Front lining







ETINCELLE



ETINCELLE

Children : 6/8 - 8/10 - 10/12 - 12/14

Ladies : XS - S - M - L

A tank-style dress featuring the elegant scalloped lace trim overlay and four-way stretch tulle skirt.

Microfiber- Stretch Lace- Stretch Tulle- Chest lining



TUTUS

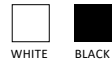
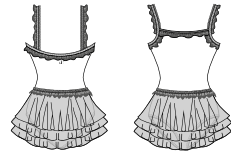




BAMBOU

Children : 2/4 - 4/6 - 6/8 - 8/10 - 10/12 - 12/14

Tutu with three layers of glittering tulle lined with lace on trim of attached camisole strapped leotard and top of skirt.
Microfiber- Lace- Tulle- Front lining



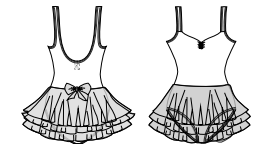
WHITE BLACK



NOISETTE

Children : 2/4 - 4/6 - 6/8 - 8/10 - 10/12 - 12/14

A pinch-front children's tutu dress with three layers of tulle and bow accent. This beautiful dress is perfect for the youngest dancer.
Microfiber- Glittering Tulle- Front lining



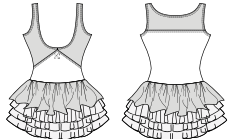
WHITE PINK SKY ROSE BLACK



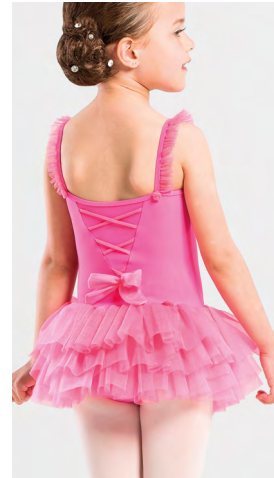
ACAJOU

Children : 2/4 - 4/6 - 6/8 - 8/10 - 10/12 - 12/14

Medium strapped tutu dress featuring floral motifs printed on stretch veil with fine opaque lines raised above bust and back. Features an attached tutu with a stretch veil floral pattern.
Microfiber- Printed Stretch Stripes Veil- Tulle - Front lining



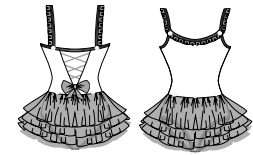
BLACK



PRALINE

Children : 2/4 - 4/6 - 6/8 - 8/10 - 10/12 - 12/14

Tutu-cute, a stylish and classy take on a kid's fashion. This four-layer tutu dress offers soft ruffle, mini roses and crisscross detail. Any little ballerina would love this dress.
Microfiber- Glittering Tulle- Front lining



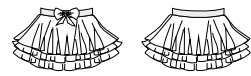
WHITE PINK SKY ROSE



NUAGE

Children : 2/4 - 4/6 - 6/8 - 8/10 - 10/12 - 12/14

Beautiful pull-over children's tutu with three layers of tulle and a bow decal.
Microfiber- Glittering Tulle



WHITE PINK SKY ROSE BLACK



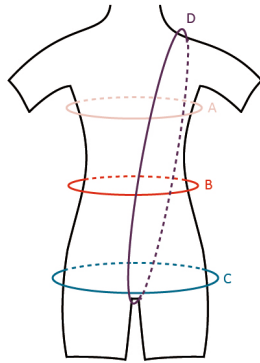


INDEX

ABELIA	p 39
ACAJOU	p 54
ACANTE	p 6
ALYSON	p 21
AZALEE	p 38
BALSAM	p 9
BAMBOU	p 54
BELMINE	p 23
CAMELIA	p 9
CANNELLE	p 37
CARLINE	p 42
CIRNUM	p 15
COLCHIC	p 6
CYPELLA	p 22
DRYADES	p 33
ERINE	p 47
ETINCELLE	p 51

EVIDENCE	p 47
FRESIA	p 10
HESTIA	p 28
IBERIS	p 33
LOBELIA	p 16
LONICERA	p 10
MAGNOLIA	p 43
MIOSOTIS	p 17
NOISETTE	p 55
NUAGE	p 54
PRALINE	p 55
SORAIA	p 24
TINA	p 30
ZENON	p 30
SIZE CHART	p 58-59

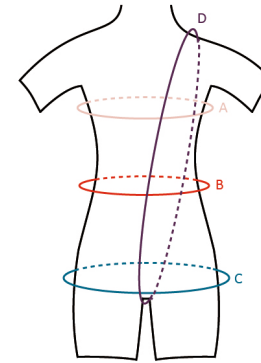
SIZE CHART IN CM



SIZES	AGE 2/4	AGE 4/6	AGE 6/8	AGE 8/10	AGE 10/12	AGE 12/14
A : Chest Width	50 - 55 cm	55 - 60 cm	60 - 65 cm	65 - 70 cm	70 - 75 cm	75 - 80 cm
B : Waist	45 - 50 cm	49 - 54 cm	50 - 55 cm	52 - 57 cm	53 - 58 cm	55 - 60 cm
C : Hips	50 - 55 cm	55 - 60 cm	60 - 65 cm	65 - 70 cm	72 - 78 cm	78 - 83 cm
D : Girth	80 - 90 cm	90 - 100 cm	100 - 110 cm	110 - 120 cm	115 - 125 cm	125 - 135 cm
Height (Size)	95 - 105 cm	100 - 115 cm	110 - 125 cm	120 - 135 cm	130 - 145 cm	140 - 155 cm

SIZES	XS	S	M	L	XL	XXL	XXXL
A : Chest Width	80 - 85 cm	85 - 90 cm	90 - 95 cm	95 - 100 cm	100 - 105 cm	105 - 110 cm	110 - 115 cm
B : Waist	55 - 60 cm	60 - 65 cm	65 - 70 cm	70 - 75 cm	75 - 80 cm	80 - 85 cm	85 - 90 cm
C : Hips	82 - 88 cm	87 - 92 cm	92 - 97 cm	95 - 100 cm	100 - 105 cm	105 - 110 cm	110 - 115 cm
D : Girth	132 - 140 cm	140 - 148 cm	148 - 156 cm	155 - 164 cm	164 - 172 cm	168 - 176 cm	175 - 180 cm
Height (Size)	150 - 160 cm	155 - 165 cm	160 - 170 cm	165 - 175 cm	170 - 180 cm	175 - 185 cm	180 - 190 cm

SIZE CHART IN INCHES



SIZES	AGE 2/4	AGE 4/6	AGE 6/8	AGE 8/10	AGE 10/12	AGE 12/14
A : Chest Width	19 - 21"	21 - 23"	23 - 25"	25 - 27"	27 - 29"	29 - 31"
B : Waist	18 - 20"	19 - 21"	20 - 22"	21 - 23"	21 - 23"	22 - 24"
C : Hips	20 - 22"	22 - 24"	24 - 26"	26 - 28"	29 - 31"	31 - 33"
D : Girth	31 - 35"	35 - 39"	39 - 43"	43 - 47"	45 - 49"	49 - 53"
Height (Size)	3'1" - 3'5"	3'3" - 3'9"	3'7" - 4'1"	3'11" - 4'5"	4'3" - 4'9"	4'7" - 5'1"

SIZES	XS	S	M	L	XL	XXL	XXXL
A : Chest Width	31 - 33"	33 - 35"	35 - 37"	37 - 39"	39 - 41"	41 - 43"	43 - 45"
B : Waist	21 - 24"	24 - 26"	26 - 28"	28 - 30"	30 - 32"	32 - 34"	33 - 35"
C : Hips	33 - 35"	35 - 37"	37 - 39"	38 - 40"	39 - 41"	41 - 43"	43 - 45"
D : Girth	52 - 55"	55 - 58"	58 - 62"	62 - 65"	65 - 68"	66 - 69"	68 - 71"
Height (Size)	4'11" - 5'3"	5'1" - 5'5"	5'3" - 5'7"	5'5" - 5'9"	5'7" - 5'11"	5'9" - 6'	6'5" - 7'1"

Wear Moi

375 Avenue St Just – Lot 6 et 7

83130 La Garde – FRANCE

Phone : +33 (0) 498 01 6000 – Fax : +33 (0) 498 01 6001

Email : info@wearmoi.com

Wear Moi (North, Central and South America)

3352 N Broadway – Chicago IL 60657 – USA

Phone : +1 (773) 850 3119 – Fax : +1 (773) 901 2167

Email : usa@wearmoi.com

Wear Mei 2023.

Designed in France