



Wear Mei

Designed in France

FASHION

2023

« Made by dancers,  
for dancers »





Collection  
**Sublime**

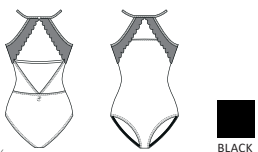




# AEGLOS

Ladies : XS - S - M - L

This ballet leotard is made from microfiber and stretch tulle. Its halter-top style has a thin strip around the neck to suggest a dainty necklace. The leotard has a button closure at the neck in the back. The top of the bust is adorned with embroidered stretch tulle to suggest the wings of the black swan in «Swan Lake». The geometric back has two triangles separated by a horizontal strap that joins the two sides. Part geometric, part bird, this style hugs your figure like a second skin molded to your body while allowing you total freedom of movement. Microfiber- Embroidered Stretch Tulle- Front lining





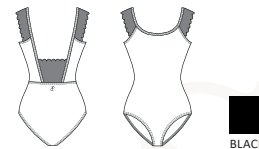


## PEYA

Ladies : XS - S - M - L

This leotard in elastane microfiber and embroidered stretch tulle boasts a unique design. It has transparent tulle sleeves that call to mind the wings of the black swan in «Swan Lake». The deep backline is accentuated with a tulle trapezoid panel featuring scalloped edges. This women's leotard will fit you like a second skin so you can dance to your heart's content. Whether «Swan Lake» is your favorite ballet or not, this ballet leotard will become your favorite dance outfit!

Microfiber- Embroidered Stretch Tulle- Front lining





# Collection Ecrin Bleu





## JASMIN



Ladies : XS - S - M - L

This camisole leotard has two embroidered tulle panels decorated with sea flowers. One panel is on the back and the other above the sweetheart neckline to play up the fabric's transparency. Two additional stretch tulle panels are placed on the sides in the back and supported by a thin horizontal strap that complements the waistline in the rear. This leotard, cut from our elastane microfiber and paired with embroidered stretch tulle that sits transparently over the skin, is the pinnacle of grace. The front in microfiber to ensure optimal comfort.

Microfiber- Embroidered Stretch Tulle- Stretch Tulle- Front lining

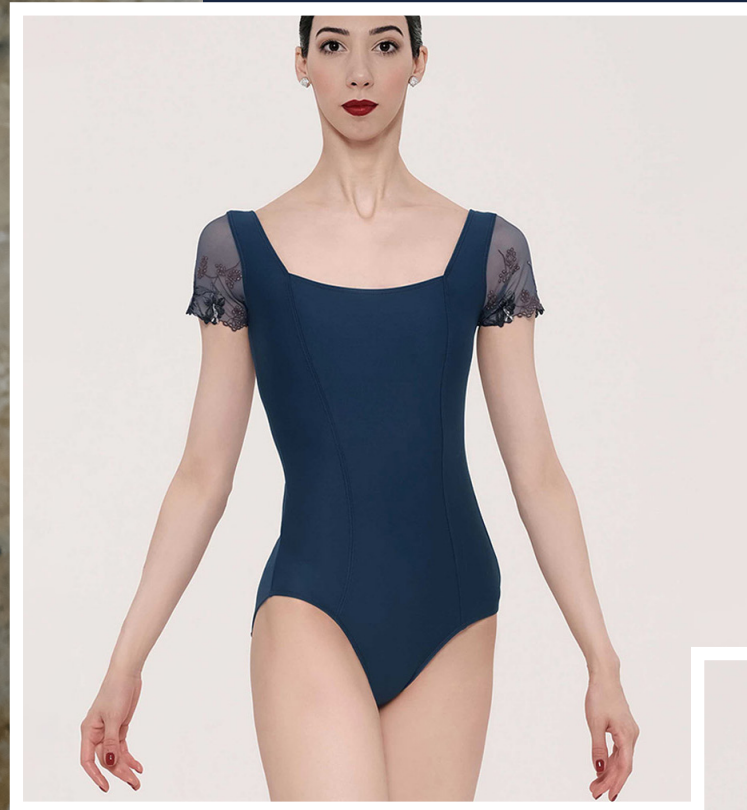


NAVY  
NIGHTBLUE

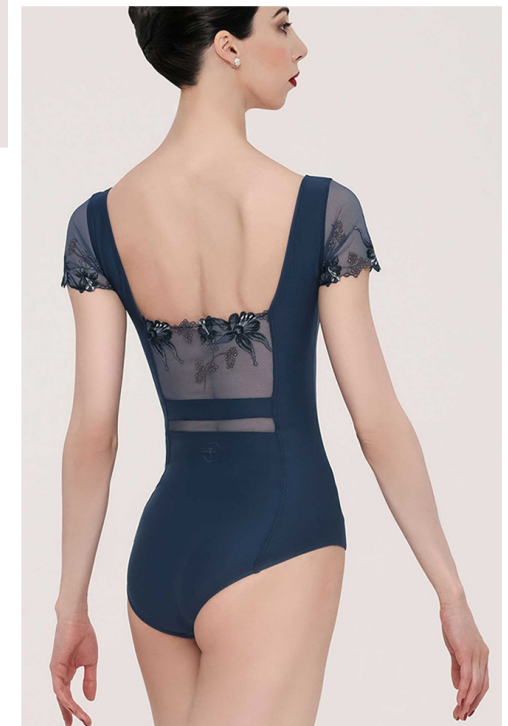


JASMIN





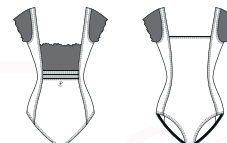
## LISERON



Ladies : XS - S - M - L

This short-sleeved leotard is made from elastane microfiber and embroidered stretch tulle to reveal glimpses of skin. The embroidered tulle placed in the back and on the shoulders in the form of cap sleeves plays up the transparency of the fabric. The waist is also accentuated with a small band of transparent stretch tulle. These materials combine with the leotard's square neckline in front and back to showcase the dancer's body. This structured, contemporary style fuses lingerie, sea flowers and sport to convey grace, elegance, stability and freedom of movement for a long and lean silhouette. Bonus feature: The vertical sculpt elongate your silhouette!

Microfiber - Embroidered Stretch Tulle - Stretch Tulle- Front lining



NAVY  
NIGHTBLUE



## Collection Ruban

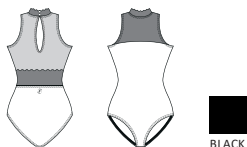
AKARSO



Ladies : XS - S - M - L

Ballet leotard with halter top and a dainty stand-up collar with scalloped edges. The neck closes with two small buttons in the back. The back is made from three different fabrics, one of which is fully transparent with a teardrop opening so you can easily slip on the leotard. The waist is also accentuated with the same embroidered tulle as the bust and the collar. This style is made from elastane microfiber, embroidered stretch tulle and transparent stretch tulle. This leotard is even more comfortable than it is refined.

Microfiber- Embroidered Stretch Tulle-  
Stretch Tulle- Front lining



AKARSO

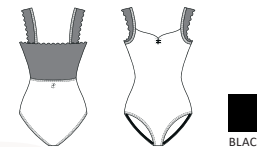


## SWEETPEA

Ladies : XS - S - M - L

This leotard is cut from elastane microfiber paired with embroidered stretch tulle. It has wide straps and a decorative tulle back to show off your shoulders and back. The edges feature a scallop finish. This ballet leotard has a pinch in the bustline. The haute couture look brings grace and support without sacrificing your comfort when you wear it.

Microfiber- Embroidered Stretch Tulle- Front lining



BLACK

Ruban

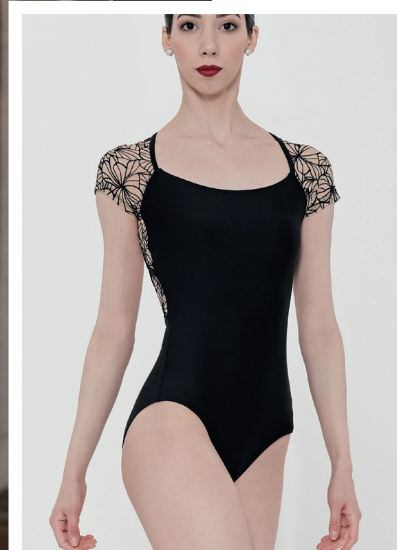




*Fall for delicate blooms to  
brighten your silhouette.*

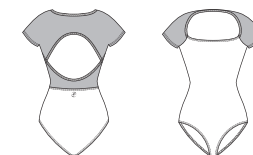


LINDIA



Ladies : XS - S - M - L

Fancy wide neckline leotard detailed by a flocked sheer stretch tulle yoke on the shoulders, upper arms and back. The back of the leotard is made of sheer flocked stretch tulle, down to the waistline. Microfiber - Flocked Stretch Tulle - Front lining



BLACK  
BEIGE

LINDIA





*It's all in the details... Be comfortable  
and confident in Wear Moi !*



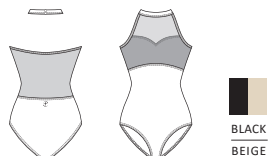


# IONA

Ladies : XS - S - M - L

Fancy open back leotard detailed with flocked sheer stretch tulle on the heart-shaped neckline, the back, and down to the waistline. Cut-out along the bust underlined with fancy fabric. Closes at the back with a fabric-covered button.

Microfiber- Flocked Stretch Tulle- Front lining





*Opt for refined  
arabesques*



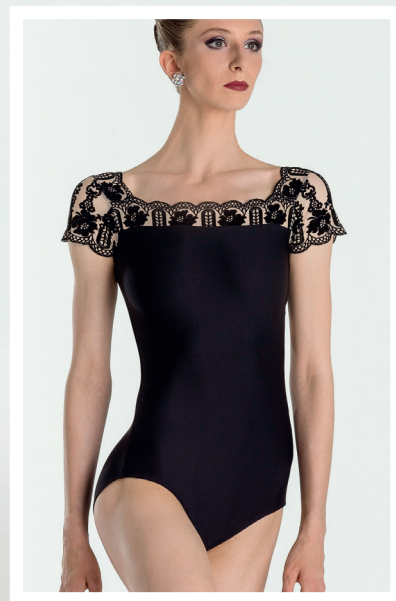
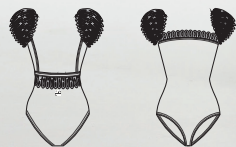




## EMMA

Ladies : XS - S - M - L

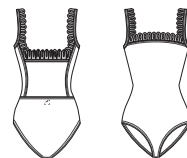
Chic, elegant and stylish. This gorgeous cap sleeve leotard features flocked light beige mesh in a truly unique pattern. Open square mid-back with lace like panel on lower back. This piece is sure to catch your eye. Wear Moi classic ballet leg cut. Microfiber - Flocked Stretch Tulle - Front lining



## ARLETTY

Ladies : XS - S - M - L

This tank style fashion leotard shows off the chic detail of the lace-like flocked mesh. Beautiful detail on the back provides extra support and helps to hide a nude support bra if needed. Open lower back creates an unforgettable look on this one of a kind piece. Microfiber - Flocked Stretch Tulle - Front lining





*On-trend pieces in oriental floral  
patterns invite you on a journey*





# FELICITE

Ladies : XS - S - M - L

Fancy high-neck long-sleeved leotard with front zipper. Sheer back, sleeves, and shoulders reveal the skin and contour the body with large flowers, like a tattoo.

Microfiber - Flocked Stretch Tulle  
- Front lining



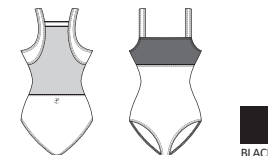
FELICITE





Ladies : XS - S - M - L

Fancy wide strap leotard cut-out along the bust, detailed with rose pattern flocked tulle front yoke. The back of the leotard is made of sheer stretch tulle, attached by solid color microfiber bands.  
Microfiber- Flocked Stretch Tulle- Front lining



LAIKA







*A balance of elegance and transparency  
for a subtle promise of grace and lightness*

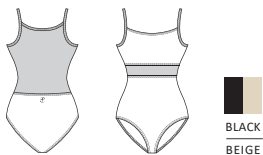




## AZURITE

Ladies : XS - S - M - L

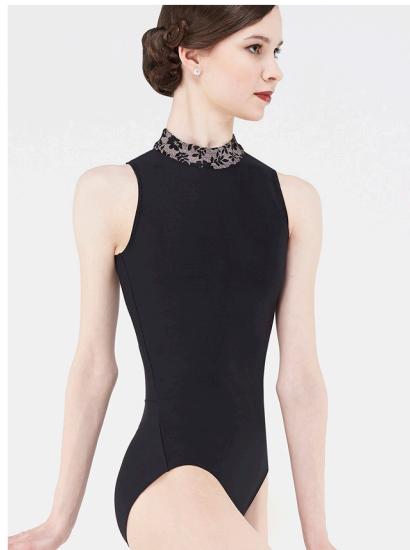
Camisole leotard with flocked flower pattern front yoke. The front cut enhances the bustline. The back of the leotard is made of sheer flocked stretch tulle, down to the waistline. Front lining. Microfiber - Flocked Stretch Tulle - Front lining







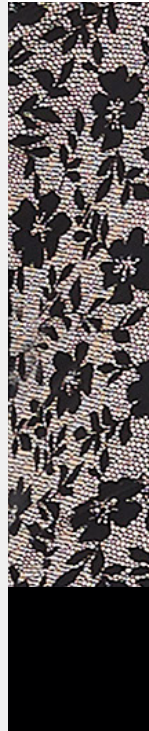




## OPALE

Ladies : XS - S - M - L

Two-material leotard with wide cut armholes and a high collar with drop shaped opening in back closed by two buttons.  
Microfiber- Printed Microfiber- Front lining



## MIMOSA

Ladies : XS - S - M - L

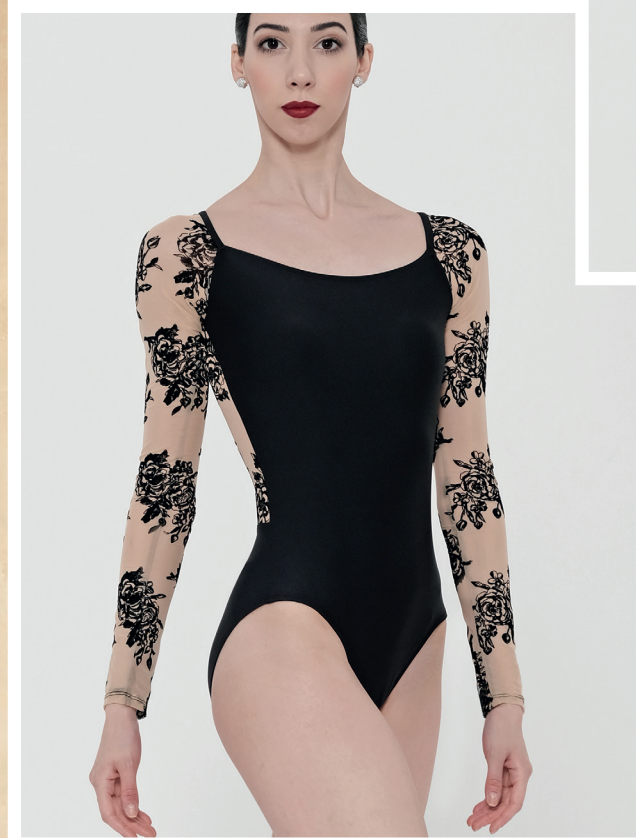
Tank strapped leotard with deep neckline and open back. The straps and upper part consist of fancy microfiber with a band of transparent stretch tulle around the entire waist.  
Microfiber - Printed Microfiber - Stretch Tulle - Front lining







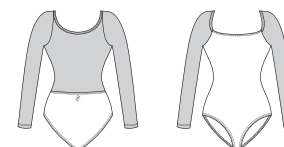
SEKOIA



Ladies : XS - S - M - L

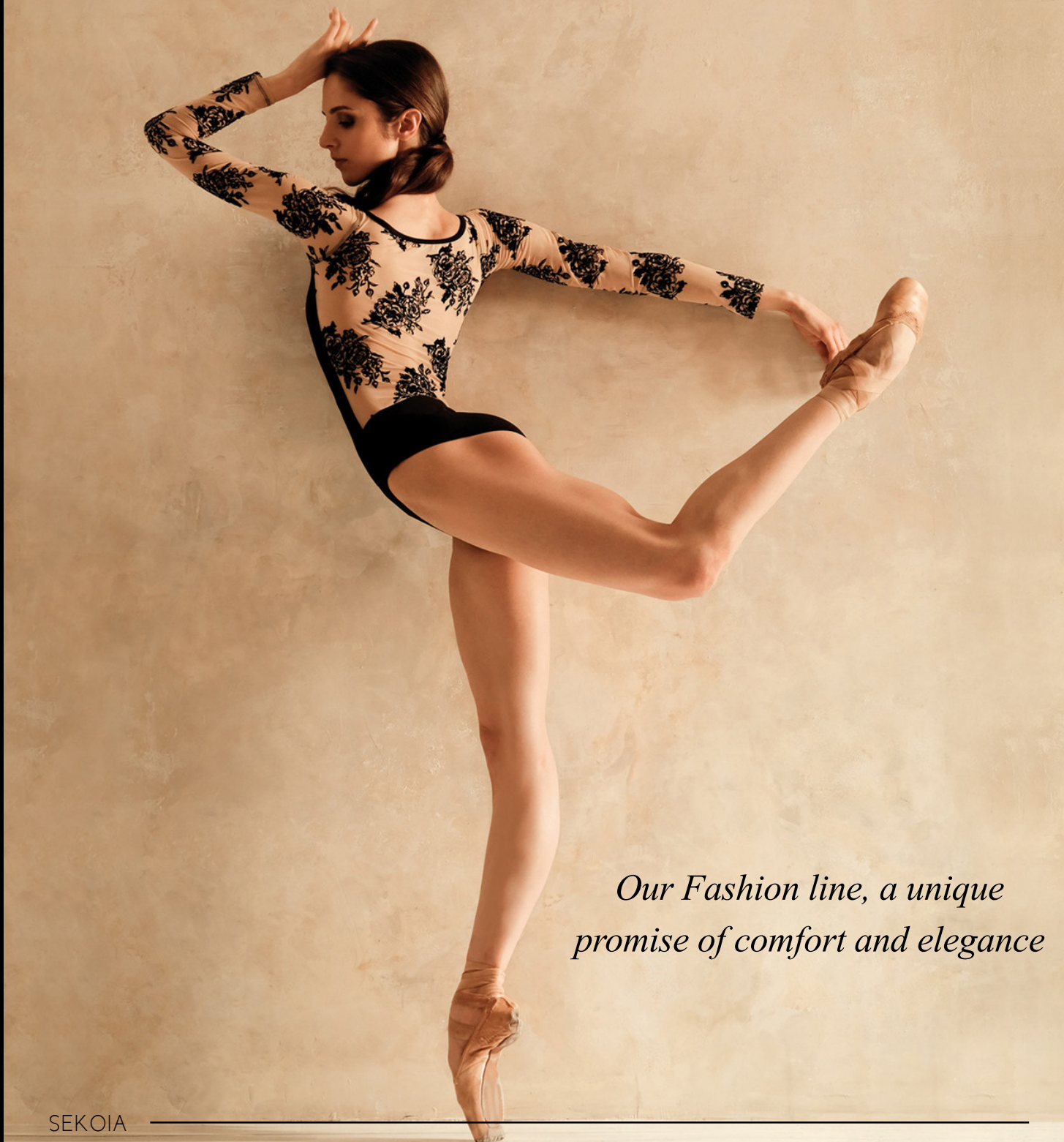
Fancy wide neckline leotard enhanced by long sleeves, featuring flocked tulle on the shoulders and back. The back of the leotard is made of flocked sheer stretch tulle, transparent down to the waistline.

Microfiber - Flocked Stretch Tulle- Front lining



BLACK  
BEIGE





*Our Fashion line, a unique  
promise of comfort and elegance*

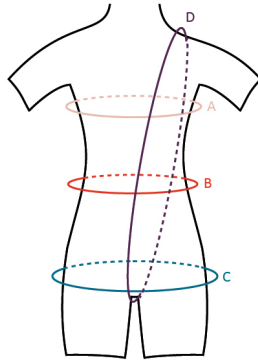


## INDEX

AEGLOS	p 6
AKARSO	p 16
ARLETTY	p 31
AZURITE	p 40
EMMA	p 30
FELICITE	p 34
IONA	p 26
JASMIN	p 12
LAIKA	p 37
LISERON	p 15
LINDIA	p 23
MIMOSA	p 45
OPALE	p 44
PEYA	p 9
SEKOIA	p 47
SWEETPEA	p 19
SIZE CHART	p 52-53

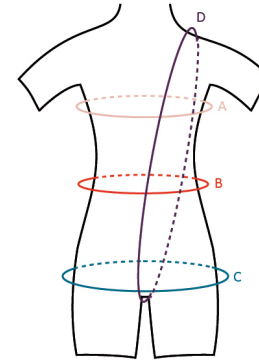


## SIZE CHART IN CM



SIZES	XS	S	M	L
<b>A : Chest Width</b>	80 - 85 cm	85 - 90 cm	90 - 95 cm	95 - 100 cm
<b>B : Waist</b>	55 - 60 cm	60 - 65 cm	65 - 70 cm	70 - 75 cm
<b>C : Hips</b>	82 - 88 cm	87 - 92 cm	92 - 97 cm	95 - 100 cm
<b>D : Girth</b>	132 - 140 cm	140 - 148 cm	148 - 156 cm	155 - 164 cm
<b>Height (Size)</b>	150 - 160 cm	155 - 165 cm	160 - 170 cm	165 - 175 cm

## SIZE CHART IN INCHES



SIZES	XS	S	M	L
<b>A : Chest Width</b>	31 - 33"	33 - 35"	35 - 37"	37 - 39"
<b>B : Waist</b>	21 - 24"	24 - 26"	26 - 28"	28 - 30"
<b>C : Hips</b>	33 - 35"	35 - 37"	37 - 39"	38 - 40"
<b>D : Girth</b>	52 - 55"	55 - 58"	58 - 62"	62 - 65"
<b>Height (Size)</b>	4'11" - 5'3"	5'1" - 5'5"	5'3" - 5'7"	5'5" - 5'9"

Wear Mei 2023 •

Designed in France