

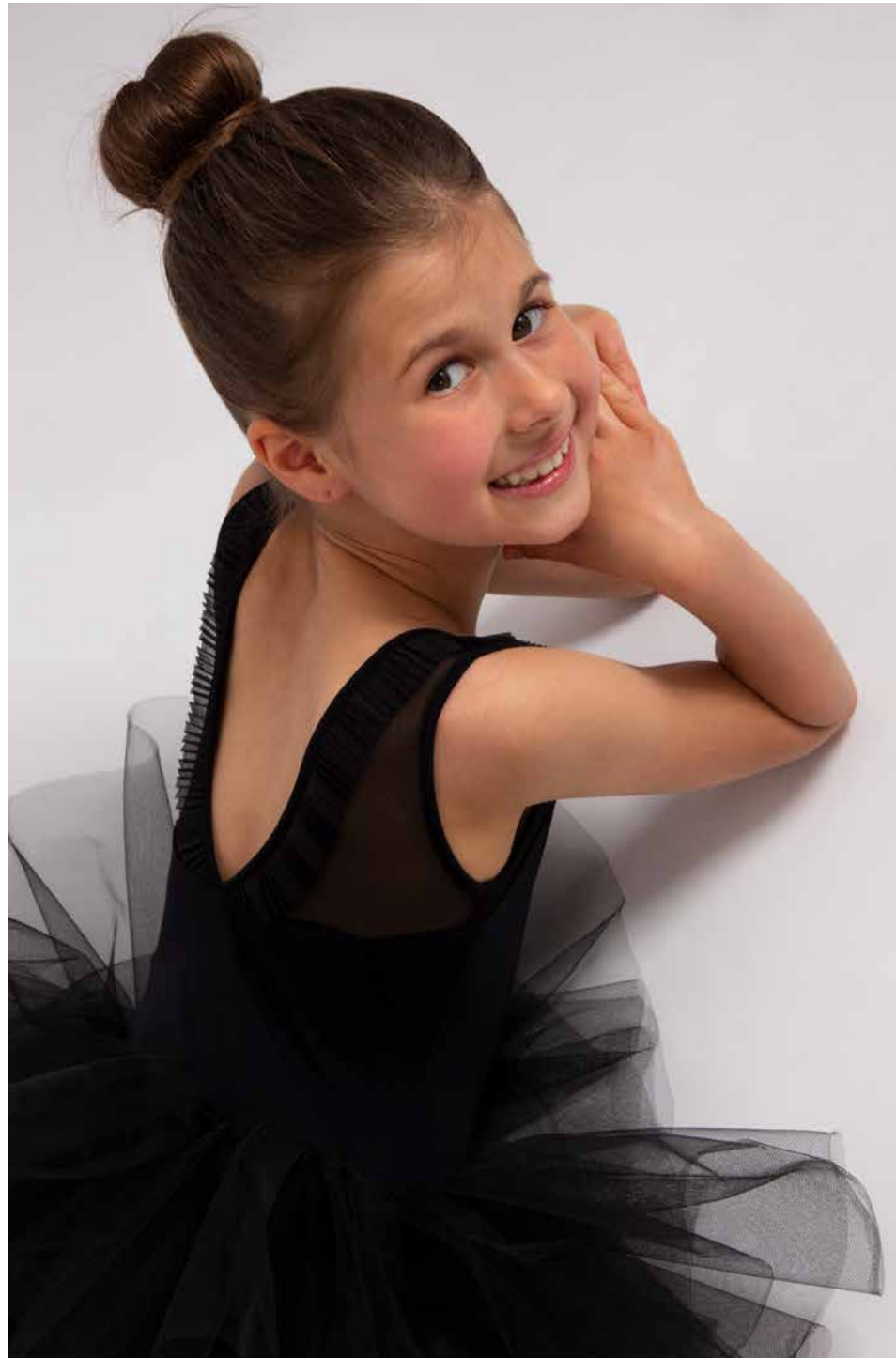
A young girl with brown hair in a bun, smiling, wearing a black sleeveless tutu with a sheer bodice and a full tulle skirt. She is standing against a plain white background.

Grighko®

Future Stars III
collection

TO DANCE, TO DREAM, TO LOVE

There are many reasons to take ballet classes for a child, they love movement, they have friends that dance, they enjoy music, they love their teacher, they have a dream to dance on stage... GRISHKO® brand would like to present Future Stars III collection created to be another reason to love your dance class.



Choosing the best for your child — it is important to have safe, high-quality materials. We use only high quality Italian materials to ensure that all GRISHKO® items are made of the finest quality raw materials. We never use any toxic dyes, sprays or cleaners on any of our raw material or finished product.

All the years of expertise of the Nikolay Grishko's factories found their expression in the refined constructions — every detail is placed with the means of comfort for the little dancer. No buttons, zippers, or drawstrings are used in design to make sure a child can put on the garments with ease and not have any distractions.

Rightfully so, kids will be kids — they want their apparel to be not only comfortable, but also beautiful. That's why we offer multiple colors and fashionable details in this collection — mesh, ruffles and tiny bows with crystals.

Every little dancer loves to watch the older students or professionals, they want to look like them. Future Stars III is created to compliment the styles and colors of the Academy, and Senses collections! Uniting the best of colors and patterns, we created a collection that satisfies parents, children, and their teachers. Collection includes leotards, skirts, t-shirts, tunics, and leggings in sizes 4-6Y to 12-13Y making the dreams of the little dancers to be "like an adult ballerina" come true.

FABRIC FEATURES OF GRISHKO® LEOTARDS

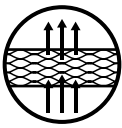
We carefully control the production to make the garment soft to touch like the second skin — because when your body feels comfort, you can concentrate on the main — dance.



The best existing high-tech and soft fabric for the sportswear that guarantees the comfort during any movements.



Super soft like a peach inside makes you feel the garment like the second skin.



Polyamide micro — hi-tech breathable fabric.



Easily absorbs the moisture and looks good even when it's a bit wet.



Fast-dries and doesn't need ironing.



Has UPF 50+ that allows to wear the garment during outdoor classes.



Special bi-stretch technology helps you to feel free during stretching and active exercises.



Keeps the form and doesn't lose it after the numbers of washing cycles.



Colors remain bright after a large number of washes.



CAREFUL PRODUCTION FOR YOUR CONFIDENCE



We use three different types of thread to answer stretching properties of the materials.



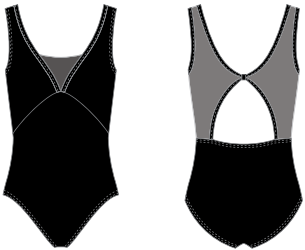
We pay attention to the end of each seam by bunching it. This guarantees longer lifespan of your garment.



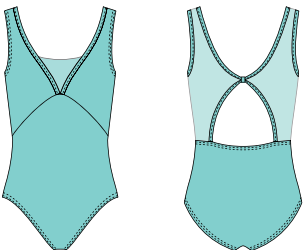


BETH LEOTARD
DAD1975M No lining
DAD1975MP With lining

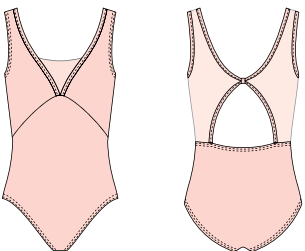
Sizes: 26-38
80% microfiber, 20% elastane



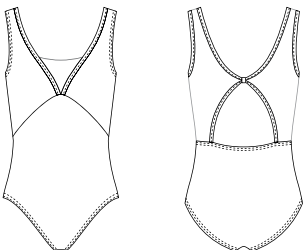
 Black



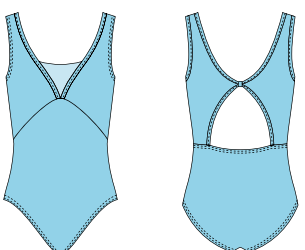
 Tiffany



 Powder



 White



 Light Blue

Launch October 2020

A perfect mix of high quality stretch mesh and Italian microfiber is soft and comfortable on the skin. Tank leotard with a beautiful v-detail on the chest and mid open back with a secure clip closure. Fully front lined. Classic leg cut.

NO POCKETS FOR CUPS

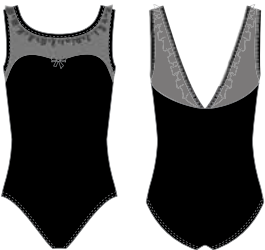
Color/Size	26	28	30	32	34	36	38
Black							
Tiffany							
Powder							
White							
Light Blue							



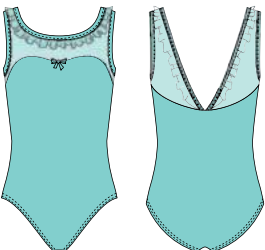


BELKA LEOTARD
DAD1976MP With lining

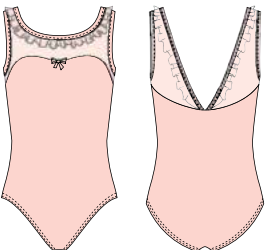
Sizes: 26-38
80% microfiber, 20% elastane



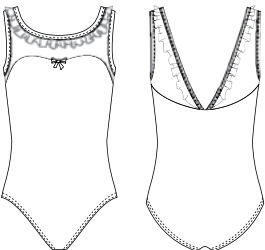
Black



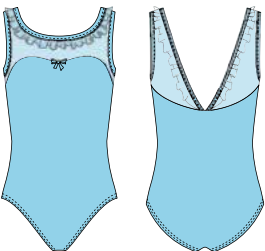
Tiffany



Powder



White



Light Blue

Launch October 2020

Tank leotard with a beautiful edge rouging detail from front to back. Sweetheart neckline. Made with the high-end Italian microfiber and mesh. Very soft and comfortable. Featuring a sparkle rhinestone detail on the chest. Fully front lined. Classic leg cut.

NO POCKETS FOR CUPS

Color/Size	26	28	30	32	34	36	38
Black							
Tiffany							
Powder							
White							
Light Blue							



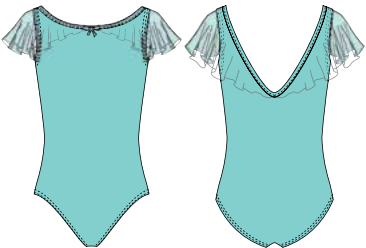


BELLE LEOTARD
DAD1977M No lining
DAD1977MP With lining

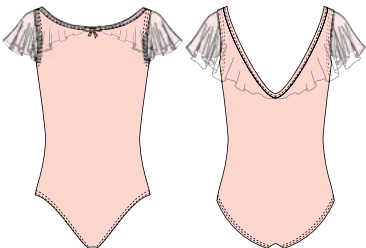
Sizes: 26-38
80% microfiber, 20% elastane



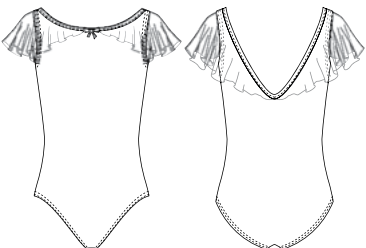
Black



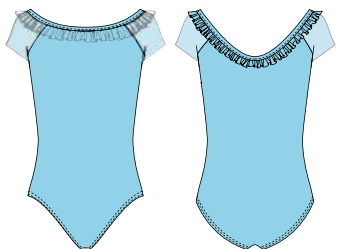
Tiffany



Powder



White



Light Blue

Launch October 2020

A tank style leotard with a gorgeous shoulder overlay detail. High modelst slight v-back. Made with the high-end Italian microfiber and mesh. Very soft and comfortable. Featuring a sparkle rhine-stone detail om the chest. Fully front lined. Classic leg cut.

NO POCKETS FOR CUPS

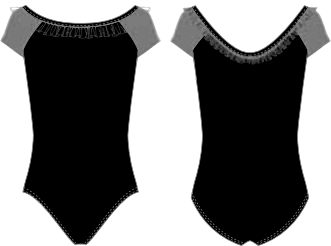
Color/Size	26	28	30	32	34	36	38
Black							
Tiffany							
Powder							
White							
Light Blue							



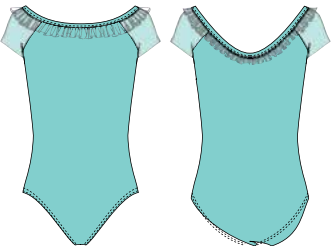


BELINDA LEOTARD
DAD1978M No lining
DAD1978MP With lining

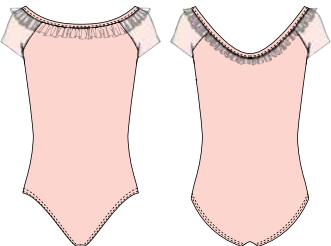
Sizes: 26-38
80% microfiber, 20% elastane



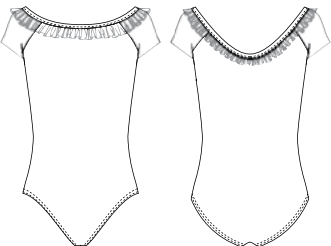
Black



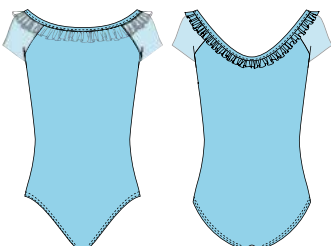
Tiffany



Powder



White



Light Blue

Launch October 2020

A camisole base leotard with a mesh cap-sleeve detail and rousing on the top. High modelst high back. Made with the high-end Italian microfiber and mesh. Very soft and comfortable. Featuring a sparkle rhinestone detail om the chest. Fully front lined. Classic leg cut.

NO POCKETS FOR CUPS

Color/Size	26	28	30	32	34	36	38
Black							
Tiffany							
Powder							
White							
Light Blue							





BLANE HIGH WAIST DRESS

DAD179M No lining

DAD1979MP With lining

Launch October 2020

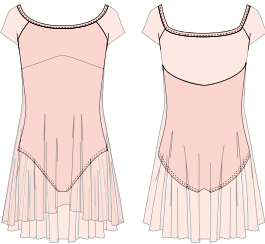
Sizes: 26-38
80% microfiber, 20% elastane



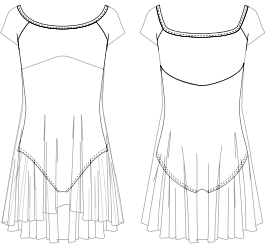
Black



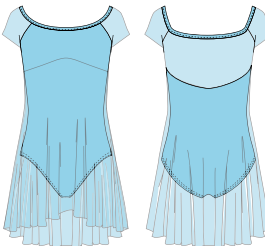
Tiffany



Powder



White



Light Blue

An amazing dress that is just as perfect for the stage as it is for a ballet class. High waist and mesh back create a beautiful look. Unfinished edging on the mesh provide flexibility to shorten the dress at any time. Bust lined. Classic leg cut.

NO POCKETS FOR CUPS

Color/Size	26	28	30	32	34	36	38
Black							
Tiffany							
Powder							
White							
Light Blue							





BRENDA LEOTARD
DAD1980MP With lining

Launch October 2020

Sizes: 26-38
80% microfiber, 20% elastane



 Powder/Flowers



 Tiffany/Flowers



 Black/Flowers

Tank style leotard with a mid drop back featuring multi-color rosette print. Comfortable and soft to the skin. Sweetheart neckline. Bust lined. Classic leg cut.

NO POCKETS FOR CUPS

Color/Size	26	28	30	32	34	36	38
Powder/Flowers							
Tiffany/Flowers							
Black/Flowers							

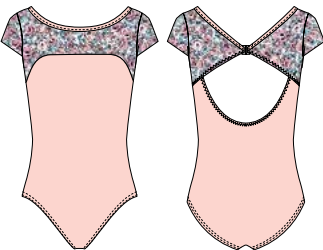




BRYANNA LEOTARD
DAD1981MP With lining

Launch October 2020

Sizes: 26-38
80% microfiber, 20% elastane



 Powder/Flowers



 Tiffany/Flowers



 Black/Flowers

Tank style leotard with a mid drop back featuring multi-color rosette print. Comfortable and soft to the skin. Sweetheart neckline. Bust lined. Classic leg cut.

NO POCKETS FOR CUPS

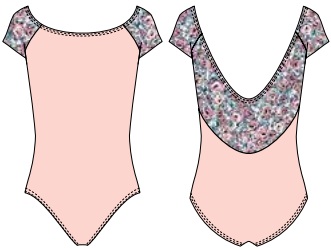
Color/Size	26	28	30	32	34	36	38
Powder/ Flowers							
Tiffany/ Flowers							
Black/ Flowers							



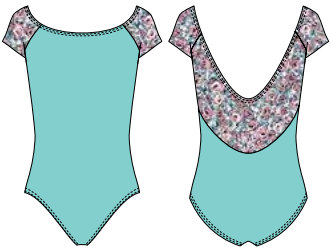


BRADIE LEOTARD
DAD1982M No lining
DAD1982MP With lining

Sizes: 26-38
80% microfiber, 20% elastane



  Powder/Flowers



  Tiffany/Flowers



  Black/Flowers

Launch October 2020

A cap sleeve leotard featuring rosette multi-color print detail and mid to low back drop. High neckline. Fully front lined. Classic leg cut.

NO POCKETS FOR CUPS

Color/Size	26	28	30	32	34	36	38
Powder/Flowers							
Tiffany/Flowers							
Black/Flowers							





BAILIE LEOTARD
DAD1983MP With lining

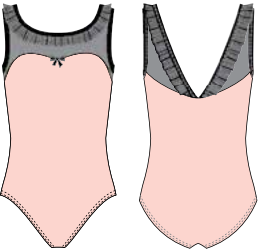
Sizes: 26-38
80% microfiber, 20% elastane



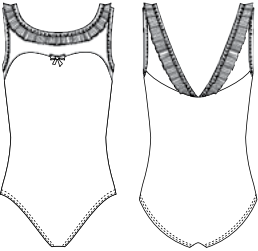
Black



Tiffany/Black



Powder/Black



White

Launch October 2020

A cap sleeve leotard featuring rosette multi-color print detail and mid to low back drop. High neckline. Fully front lined. Classic leg cut.

NO POCKETS FOR CUPS

Color/Size	26	28	30	32	34	36	38
Black							
Tiffany/ Black							
Powder/ Black							
White							



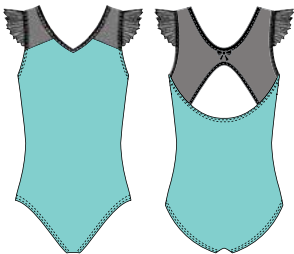


BABETTE LEOTARD
DAD1984M No lining
DAD1984MP With lining

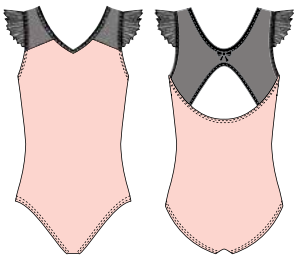
Sizes: 26-38
80% microfiber, 20% elastane



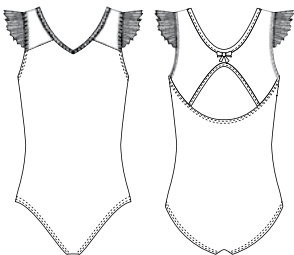
Black



Tiffany/Black



Powder/Black



White

Launch October 2020

A tank style leotard with pleated mesh shoulder detail, as one rhinestone featured on a mesh back with a mid back opening. Fully front lined. Classic leg cut.

NO POCKETS FOR CUPS

Color/Size	26	28	30	32	34	36	38
Black							
Tiffany/ Black							
Powder/ Black							
White							





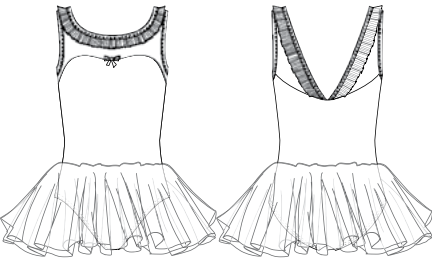
BLAKE LEOTARD WITH SKIRT

DAD1985M No lining
DAD1985MP With lining

Launch October 2020

Sizes: 26-38
80% microfiber, 20% elastane

A tank style dress, with a pleated ruffle detail. Featuring a rhine-stone on the bust. Mid back and most comfortable microfiber in the industry. All Italian tulle attached skirt. Front lined. Classic leg cut.



White



Black

NO POCKETS FOR CUPS

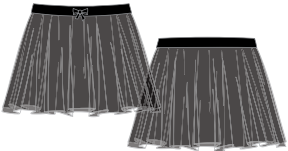
Color/Size	26	28	30	32	34	36	38
White							
Black							



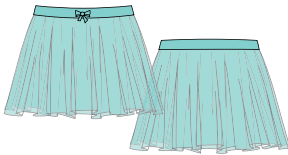


BRYNN MESH SKIRT
DAD1986

Sizes: 26-38
93% microfiber, 7% elastane



 Black



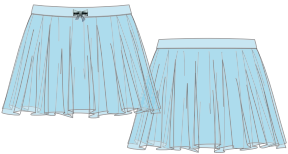
 Tiffany




 Powder



 White



 Light Blue

Launch October 2020

The perfect stretch mesh skirt for children. Pull-on style. Rhine-stone detail on the waist.

Color/Size	26	28	30	32	34	36	38
Black							
Tiffany							
Powder							
White							
Light Blue							





BRIE SKIRT
DAD1986/1

Sizes: 26-38
93% microfiber, 7% elastane



 Flowers

Launch October 2020

Rosette multi color flower print skirt. Light and comfortable.

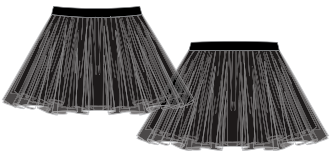
Color/Size	26	28	30	32	34	36	38
Flowers							





BROOKE MESH SKIRT
DAD1987

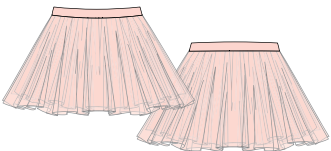
Sizes: 26-38
93% microfiber, 7% elastane



 Black



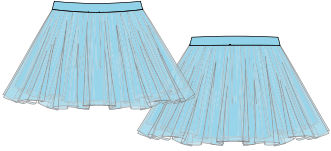
 Tiffany



 Powder



 White



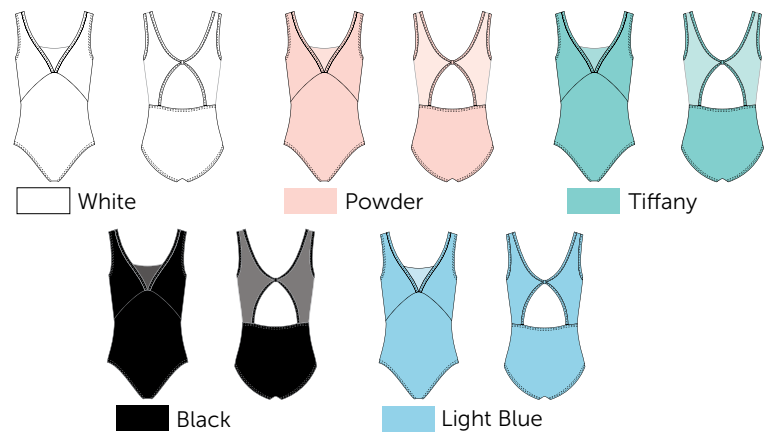
 Light Blue

Launch October 2020

A round pull-on skirt with an elastic band. Two layers of premium Italian tulle with a third layer of stretch mesh.

Color/Size	26	28	30	32	34	36	38
Black							
Tiffany							
Powder							
White							
Light Blue							





Launch October 2020

BETH
LEOTARD
DAD1975M
DAD1975MP
Sizes: 26-38
80% microfiber, 20% elastan
No pockets for cups



BELKA
LEOTARD
DAD1976MP
Sizes: 26-38
80% microfiber, 20% elastane
No pockets for cups



BELLE
LEOTARD
DAD1977M
DAD1977MP
Sizes: 26-38
80% microfiber, 20% elastane
No pockets for cups



BELINDA
LEOTARD
DAD1978M
DAD1978MP
Sizes: 26-38
80% microfiber micro,
20% elastane
No pockets for cups



Launch October 2020

BLANE
LEOTARD WITH MESH TUNIC
DAD1979M
DAD1979MP
Sizes: 26-38
80% microfiber, 20% elastane
No pockets for cups



BRENDA
LEOTARD
DAD1980MP
Sizes: 26-38
80% microfiber, 20% elastane
No pockets for cups



BRYANNA
LEOTARD
DAD1981MP
Sizes: 26-38
80% microfiber, 20% elastane
No pockets for cups

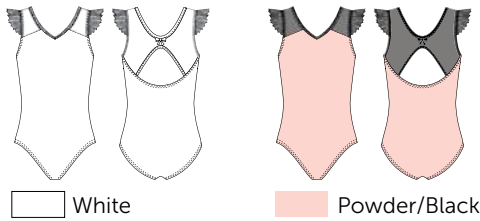


BRADIE
LEOTARD
DAD1982M
DAD1982MP
Sizes: 26-38
80% microfiber, 20% elastane
No pockets for cups

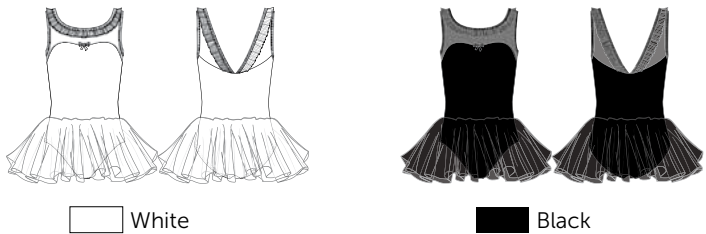


Launch October 2020

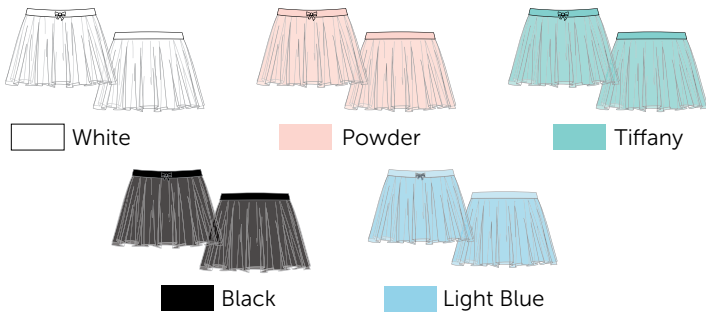
BAILIE
LEOTARD
DAD1983MP
Sizes: 26-38
80% microfiber, 20% elastane
No pockets for cups



BABETTE
LEOTARD
DAD1984M
DAD1984MP
Sizes: 26-38
80% microfiber, 20% elastane
No pockets for cups



BLAKE
LEOTARD WITH SKIRT
DAD1985M
DAD1985MP
Sizes: 26-38
80% microfiber, 20% elastane
No pockets for cups



BRYNN
MESH SKIRT
DAD1986
Sizes: 26-38
93% microfiber, 7% elastane



BRIE
SKIRT
DAD1986/1
Sizes: 26-38
93% microfiber, 7% elastane



BROOKE
MESH SKIRT
DAD1987
Sizes: 26-38
93% microfiber, 7% elastane

GRISHKO® APPAREL SIZE CORRESPONDENCE CHART

All the measurements in chart are based on RU sizes, size range in articles are also in RU sizes.

GIRLS							
Height, cm	110	116–122	128	134	140	146	152
Height, inch	43"	45"–47"	47"-50"	50"-52,7"	52,7"-55"	55"-57.4"	57,4"-59,8"
Chest, cm	52	56	57–60	61–64	65–68	69–72	73-76
Chest, inch	20.4"	22"	22.4"–23.6"	24"–25.1"	25.6"–26.7"	27.1"–28.3"	28.7"–29.9"
Waist, cm	51	52	53–54	55–57	58–59	60	61
Waist, inch	20"	20.4"	20.8"–21.2"	21.6"–22.4"	22.8"–23.2"	23.6"	24"
Hip, cm	60	63	64–68	69–72	73–77	78–81	82-85
Hip, inch	23.6"	24.8"	24"–26.7"	27.1"–28.3"	28.7"–30.3"	30.7"–31.8"	32.2"–33.4"
Age (RU)	3–4 Y	4–5 Y	6–7 Y	8–9 Y	9–10 Y	10–11 Y	12–13 Y
Russia (RU)	26	28	30	32	34	36	38
Age (EU)	-	4 Y	6 Y	8 Y	10 Y	11 Y	12 Y
Europe (EU)	110–116	116–122	122–128	128–134	134–140	140–146	146–152
United States (USA)	4-5	6-7	7-8	8-9	9-10	10-11	12-13
United Kingdom (UK)	5–6	6–7	7–8	8–9	9–10	10–11	11–12
Japan (JP)	110	120	120	130	140	150	160
China (CH)	115	125	125	135	145	155	165



GRISHKO® HEAD OFFICE
Proezd Zavoda Serp i Molot, 2/4
Moscow, 111250, Russia
+7 495 980 91 10
export@grishko.ru

GRISHKO® DISTRIBUTION CENTER
Grishko Dance s.r.o.
Jiřího ze Vtelna 1731 (Areal Pragorent)
193 00 Praha 9 – Horní počernice
+ 420 727 933 480
export@grishko.eu



grishko-world.com



grishkoshop.com

