

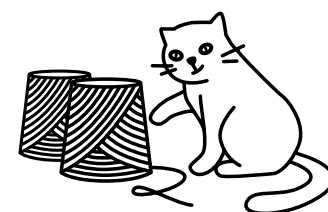
A close-up photograph of a woman's upper body. She is wearing a light-colored, textured knit sweater with a subtle pattern of small, dark spots. Her hands are resting on her chest, and her fingers are slightly spread. The background is a soft, out-of-focus white. The overall mood is warm and cozy.

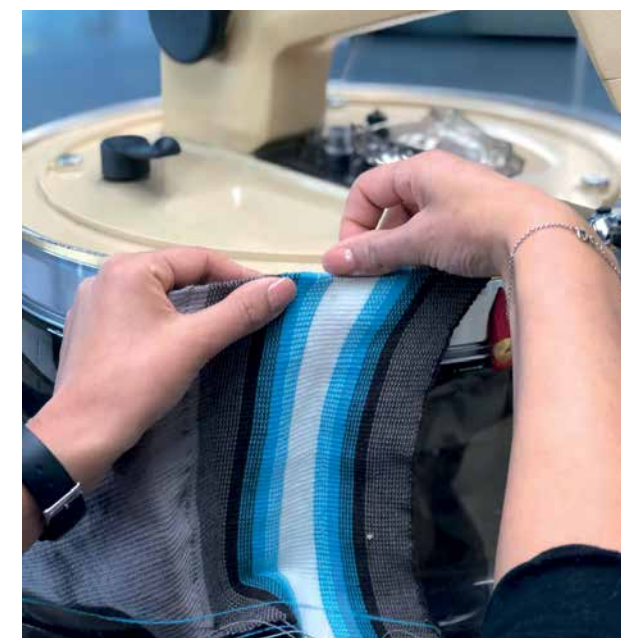
Grishko®

KNITTED WARM-UP



Warm-up is essential before the class or rehearsal, and dancers prefer cozy apparel that will complement their leotards or leggings. We're doing our best to make your dreams come true, that's why this collection is a perfect match to the fashion **Bolshoi stars. SENSES** and basic leotards of classic ballet colors: white, blue, pink and black.



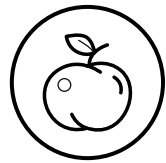


SEEKING THE BEST

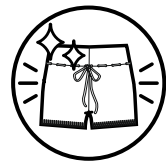
GRISHKO® knitwear collection was a best-seller after the first release, and we're sure this time it will be the same popular, as we saved the best and improved everything possible.

- The premium-quality Italian yarn is tested several times before knitting.
- Modern production allows using pearly knitting technology that makes garments extra flexible.
- Refined form with perfect fit and trendy look.
- The quality department carefully checks each garment during production and when finished. The highest quality is approved by professional dancers and happy ballet moms, who admire the durability.

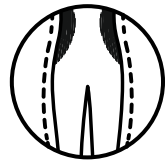
YARN



High-technology production processing makes the ready garment soft and not itchy.



The color stays bright after dozens of washing cycles.



Super comfort due to pearly-knitting technology that allows repeating anatomy of the body even when doing full-leg splits.



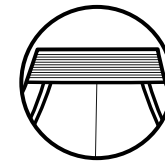
The yarn complies the German, Italian and European Laws regarding the prohibition of the use of toxic substances.



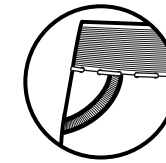
ECO. The yarn is made by a sustainable factory, which uses innovative dyeing on cones that can achieve 50% of water saving compared to conventional dyeing. Also the large part of the energy supplied by the photovoltaic system installed on the roof of the plant.



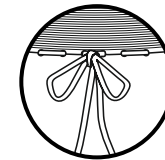
CONSTRUCTION



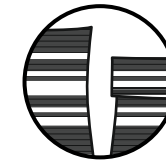
Additional elastic rows emphasize the waistline and fix the garment.



Shorts and pants have useful pockets.



Adjustable drawstrings fix the garment securely.



The waistband is doubled, so you can choose preferable fixing: on the waist or on the hips, and in any case, it will be aesthetically pleasing.





ELE-
GANT
COM-
FORT-
ABLE

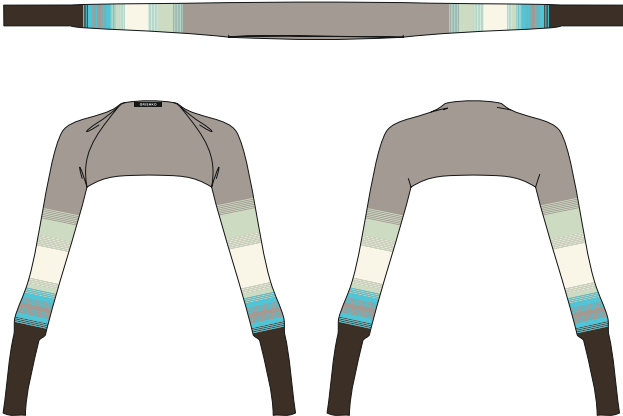


Shoulder & arm warmer Art. 06201/1
 Leotard Art. DA 1930MP
 Skirt Art. DA 1946M
 DreamStretch Art. 03020

06201/1

SHOULDER & ARM WARMER

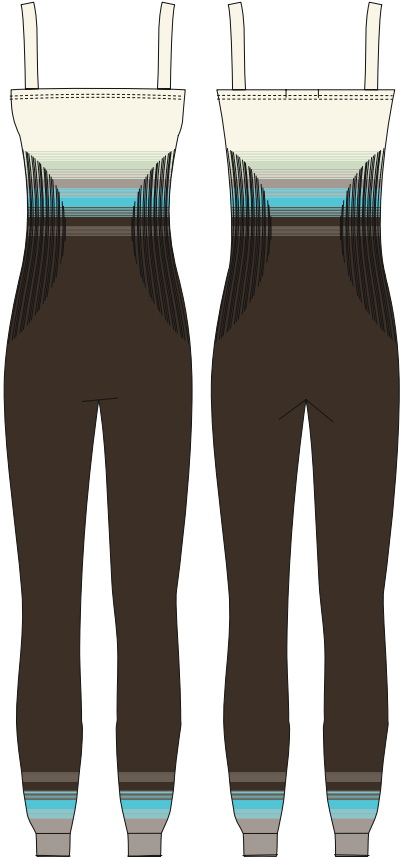
A lot of ballerinas prefer leotards with straps, but it can be really cold at the beginning of the class. We designed bolero-sleeves to warm arms, shoulders and the back of the neck. One size: elastic cuffs securely, but tender fix the sleeve on the wrist or above.



06211/1

UNITARD

Extremely comfortable unitard for full-body warm-up. Easy to put on and off. Additional elastic rows on the waist emphasize the figure and fix the garment. Recommended to wear with warm-up boots - wide cuffs are designed to create a stylish look.





WARM ELAS- TIC



Shorts Art. 06202/1
Leotard Art. DA 1932MP
DreamPointe Art.0528

06202/1

SHORTS

Shorts will help to warm-up the low-back and gluteus. Often bought together with open-work bolero (art.06212/1) Have a double waistband that allows fixing the garment on the hips or waist depending on the preferences.



06206/1

PANTS WITH SIDE POCKETS

Comfortable for full leg-splits due to extra elastic gusset. This item is made with pockets, so pants are very comfortable in between the classes. Together with shoulder and arm warmer (art. 06201/1) create a stylish look.





SILKY TENDER



Striped legwarmer Art. 06209/1
 Leotard Art. DA 1933MP
 Skirt DA 1945
 DreamStretch Art. 03020

06209/1

STRIPED LEGWARMERS 80 CM

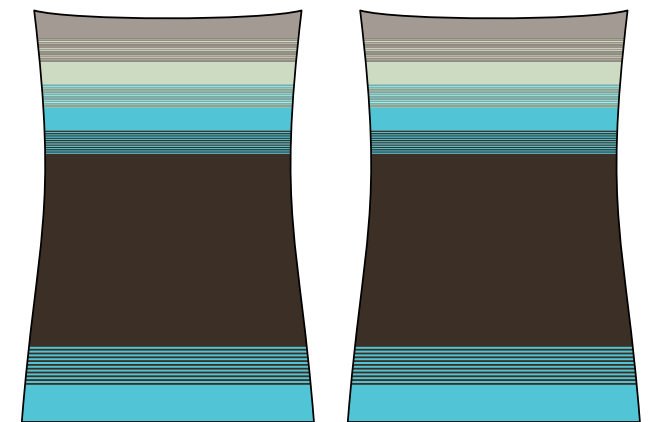
Legwarmers are made in one size: length 80 cm allows to warm the whole leg from the ankle to the hip. Elastic knitting fixes the garment on a preferable level, so dancers can easily put them down to warm only the bottom part of the leg.



06203

BODY WAIST WARMER

Flexible knitted belt warms the muscles of the back and abs. Often used by dancers to protect the low back and gluteus, as this part of the body gets wet during the rehearsals in the first place. It can be easily folded to adjust the length to the height of the dancer.





SOFT RO- MAN- TIC



Jumper "Japan" Art. 06205/1
Leotard Art. DA 1932MP
Skirt DA 1945

06205/1

JUMPER "JAPAN"

The bestselling model of the jumper in 3 new colors - coffee, tiffany and brown. Amazingly soft to touch, being made of the fluffy yarn. It has a casual look and can be easily worn between the classes or in everyday life.



A close-up photograph of a person wearing a grey, textured, open-knit sweater over a brown top. A hand is resting on the person's hip. The background is a soft, out-of-focus white. The text 'COOSY' is in a brown, thin, sans-serif font, and 'BEAU-TIFUL' is in a light blue, thin, sans-serif font, both in all caps.

COOSY BEAU- TIFUL

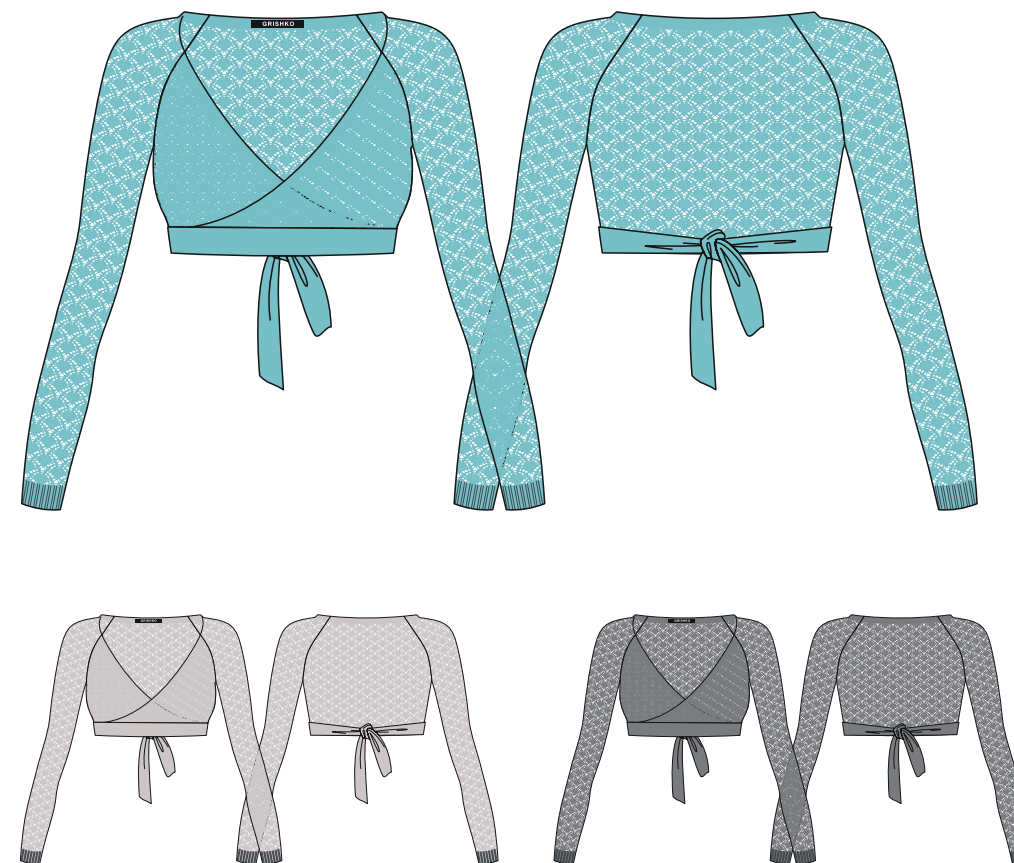


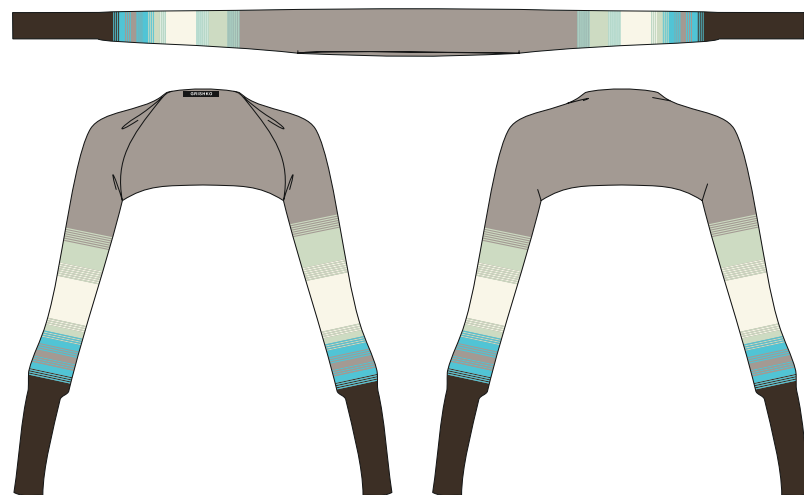
Open-work bolero Art. 06212/1
Leotard Art. DA 1930MP
Skirt DA 1945
DreamStretch Art. 03020

06212/1

OPEN-WORK BOLERO

One of the most loved styles among dancers - it looks amazing on different types of figures, underlying the bust line and making the neck visually longer. Bolero is made of fluffy yarn and perfect to warm up the shoulder blade and arms.





**06201/1
SHOULDER & ARM WARMER**

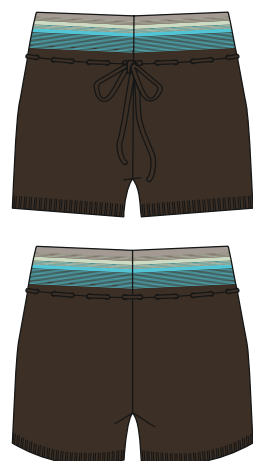
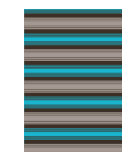
One size
50% Merino Wool
50% Acryl
Multicolor



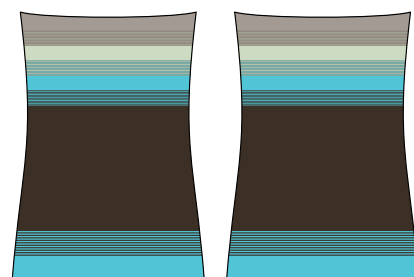
**06206/1
PANTS WITH
SIDE POCKETS**
RU: 32-34/36-38/
40-42/44-46/48-50
50% Merino Wool
50% Acryl
Multicolor



**06209/1
STRIPED LEGWARMERS**
80 cm
50% Merino Wool
50% Acryl
Multicolor



**06202/1
SHORTS**
RU: 36-38/40-42/
44-46/48-50
50% Merino Wool
50% Acryl
Multicolor



**06203
BODY WAIST WARMER**
RU: 32-38/40-48
50% Merino Wool
50% Acryl
Multicolor

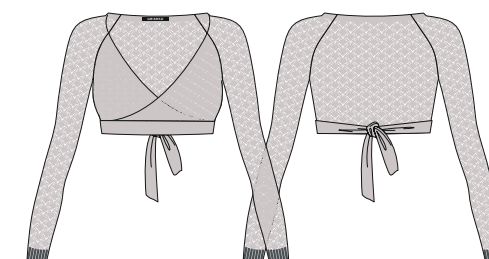


**06211/1
UNITARD**
RU: 32-34/36-38/
40-42/44-46/48-50
50% Merino Wool
50% Acryl
Multicolor



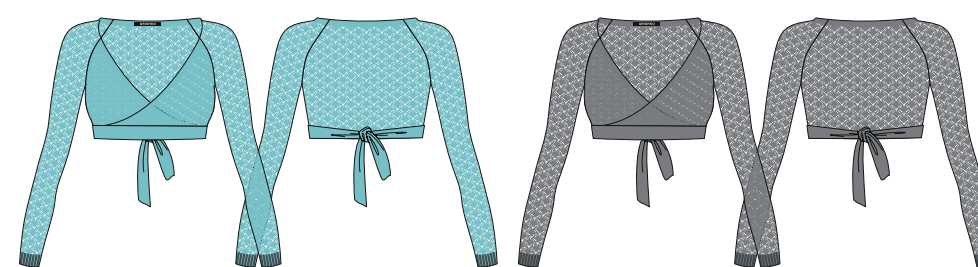
**06205/1
JUMPER "JAPAN"**
RU: 36-38/40-42/44-46/48-50
50% Merino Wool
50% Acryl

Pearl
Tiffany
Grey (melange)



**06212/1
OPEN-WORK BOLERO**
RU: 36-38/40-42/44-46/48-50
60% Acryl
14% Polyamid
10% Polyester
8% Viscose
8% Wool

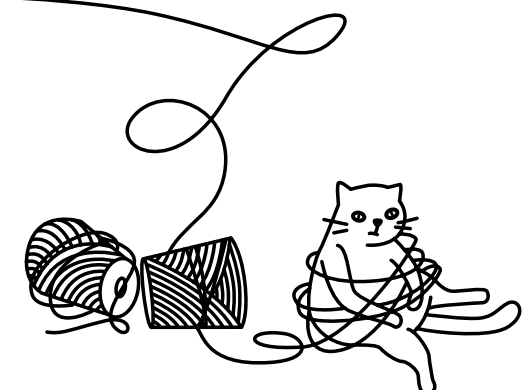
Pearl
Tiffany
Grey (melange)



GRISHKO® KNITWEAR SIZE CORRESPONDANCE CHART

NOTES

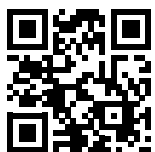
LADIES			
Height, cm	158–164	168–172	168–172
Bust circumference, cm	77–84	85–92	93–100
Waist circumference, cm	61–64	65–72	73–80
Hip circumference, cm	86–92	93–100	101–108
International (S–M–L)	XXS–XS	S–M	L–XL
Russia (RU)	40–42	44–46	48–50
Italy (IT)	40–42	44–46	48–50
France (FR)	36–38	40–42	44–46
Germany (DE)	34–36	38–40	42–44
USA (US)	4–6	8–10	12–14
United Kingdom (UK)	8–10	12–14	16–18
Japan (JP)	7–9	11–13	15–17
China (CH)	155/80A–160/84A	165/88A–179/92A	175/96A–180/100A
GIRLS			
Bust circumference, cm	56–60	61–68	69–76
Waist circumference, cm	52–54	55–59	60–61
Hip circumference,cm	63–68	69–77	78–85
Height, cm	116–128	134–140	146–152
Age (EU size)	4–6 Y	8–10 Y	11–12 Y
Russia (RU)	28–30	32–34	36–38

[illegible]



GRISHKO® HEAD OFFICE
Proezd Zavoda Serp i Molot, 2/4
Moscow, 111250, Russia
+7 (495) 980 91 10
export@grishko.ru

GRISHKO® DISTRIBUTION CENTER
Grishko Dance s.r.o.
Jiřího ze Vtelna 1731 (Areal Pragorent)
193 00 Praha 9 – Horní počernice
+ 420 727 933 480
export@grishko.eu



grishkoshop.com



grishko-world.com



[grishkoworld](https://www.instagram.com/grishkoworld)



[grishkoworld](https://www.facebook.com/grishkoworld)