

Wear Mei

Designed in France

WARM UP & ACTIVE WEAR



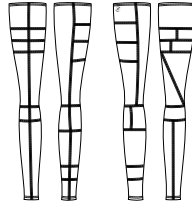
« Made by dancers,  
for dancers »







## SUPERBE



COLOR 6  
BLACK  
GREY  
WHITE



COLOR 7  
PEACOCK BLUE  
OCEAN  
WHITE



COLOR 8  
BLACK  
AMETHISTE  
BYZANTINE

Children : 8/12  
Ladies : XS/S - M/L

Eye-catching patchwork design that offers extreme comfort. These leg warmers are sure to become a favorite.  
Knitted Acrylic Elasthan



## TULIPE



COLOR 6  
BLACK  
GREY  
WHITE



COLOR 7  
PEACOCK BLUE  
OCEAN  
WHITE



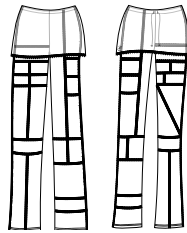
COLOR 8  
BLACK  
AMETHISTE  
BYZANTINE

Children : 8/10 - 10/12  
Ladies : XS - S - M - L

Stylish stretch knit crop-top featuring comfortable patchwork design and scoop neckline.  
Knitted Acrylic Elasthan



## SYRMA



COLOR 6  
BLACK  
GREY  
WHITE



COLOR 7  
PEACOCK BLUE  
OCEAN  
WHITE



COLOR 8  
BLACK  
AMETHISTE  
BYZANTINE

Children : 8/10 - 10/12  
Ladies : XS - S - M - L

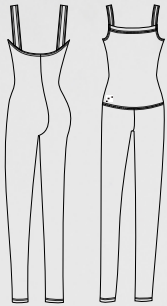
Eye-catching patchwork design that offers extreme comfort and stretch. These fold-over boot-cut pants are perfect from street to studio.  
Knitted Acrylic Elasthan



# CAPELLA

Children : 8/10 - 10/12  
Ladies : XS - S - M - L

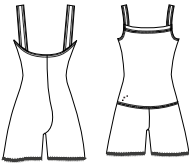
This warm up knit ankle length romper will keep you warm and comfortable in dance class.  
Knitted Acrylic Elasthan



# ALOES

Children : 8/10 - 10/12  
Ladies : XS - S - M - L

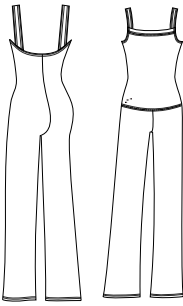
Our knitted romper is a versatile garment that can also be rolled down to the waist and worn as shorts.  
Knitted Acrylic Elasthan



# CALOU

Children : 8/10 - 10/12  
Ladies : XS - S - M - L

Our knit boot-leg pant romper is a perfect addition to your class apparel.  
Knitted Acrylic Elasthan







NAYA 

Children : 8/10 - 10/12

Ladies : XS - S - M - L

Short sleeve crop top sweater with an eye-catching design and comfortable cut.  
Knitted Acrylic Elasthan



SALMON



GREY



BLACK





## TIARA

Children : 8/10 - 10/12  
Ladies : XS - S - M - L

Gorgeous, warm and comfortable fold over shorts including a waist drawstring with a rolled hem. Knitted Acrylic Elasthan



## CEYLAN

Children : 8/10 - 10/12  
Ladies : XS - S - M - L

Acrylic warm-up shorts. Elastic on the waist for a secure fit. Knitted Acrylic Elasthan

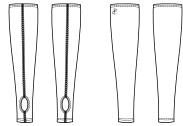




# IZALIA

Children : 8/12  
Ladies : XS/S - M/L

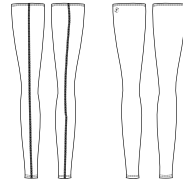
Short stirrup leg warmers.  
Knitted Acrylic Elasthan



# CRISTAL

Children : 8/12  
Ladies : XS/S - M/L

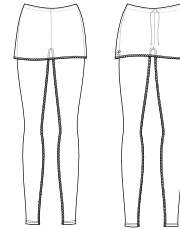
Full length skinny fit leg warmers.  
Soft and comfortable.  
Knitted Acrylic Elasthan



# CRYSALIDE

Children : 8/10 - 10/12  
Ladies : XS - S - M - L

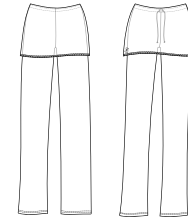
A unique and flattering sweater  
waistband folds over these warm  
tights with a drawstring waist.  
Knitted Acrylic Elasthan



# UTAMI

Children : 8/10 - 10/12  
Ladies : XS - S - M - L

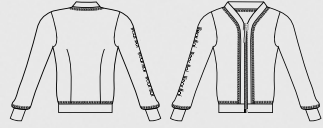
These warm up pants feature a  
boot cut style with a fold over  
waistband.  
Knitted Acrylic Elasthan



# PATIENCE

Ladies : XS - S - M - L

Fitted jacket with zippered front, embellished with silver serigraphy on the right arm. Unlined. Double Viscose Elasthan Jersey



BLACK



# PIVOINE

Ladies : XS - S - M - L



Soft hooded jacket with front zipper, embellished with a silkscreen print on the right arm and patch pockets on the lower center front. Unlined. Double Viscose Elasthan Jersey

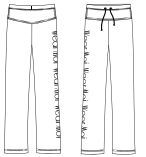


BLACK



# PALOMINO

Ladies : XS - S - M - L



Straight cut pants with front and back hip yokes, wide elastic waistband, and a drawstring waist for greater comfort. Topstitched hem finish at the bottom and silkscreen print on the entire side of the right leg. Double Viscose Elasthan Jersey



BLACK



# PANDORE

Ladies : XS - S - M - L



Wide jogging pants tightened at the ankles, finished with a lapel band at the waist, crossed by a drawstring, with silkscreen print centered on the right leg. Double Viscose Elasthan Jersey

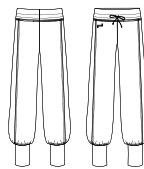


BLACK





## OPUS



Children : 6/8 - 8/10 - 10/12 - 12/14  
Ladies : XS - S - M - L

Four-way stretch warm-up pants with fitted ankle and a drawstring for secure fit. Perfect for a dancer that wants to stay warm or can be used as a team uniform warm-up. Pair with Iliade jacket for a complete look. Double Viscose Elasthan Jersey



NAVY



BLACK



## PENELOPE



Children : 6/8 - 8/10 - 10/12 - 12/14  
Ladies : XS - S - M - L

Warm-up pants with elastic waist band and drawstring. Wide leg for a more relaxed and comfortable fit. Double Viscose Elasthan Jersey



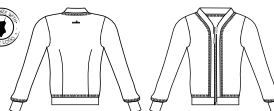
NAVY



BLACK



## ILIADE



Children : 6/8 - 8/10 - 10/12 - 12/14  
Ladies : XS - S - M - L

Ladies cut four-way stretch warm-up jacket with a front zip and double dart seams. This jacket is perfect for staying warm between rehearsals, or for use as a team uniform warm-up. Pair with Opus pants for a complete look. Double Viscose Elasthan Jersey



NAVY



BLACK



ILIADE



Collection PREMIÈRE  
Knitwear







## MENUET

Children : 4/6 - 6/8 - 8/10 - 10/12  
Ladies : XS - S - M - L - XL



This classic knitted full-sleeved wrap-around top secures with adjustable self-ties for a snug fit. This is a must-have piece in the studio: layer the wrap-around top over your favorite leotard before you warm up. Our soft knitted fabric delivers maximum comfort and a perfect fit.

Knitted acrylic elastane



## SONATE

Children : 4/6 - 6/8 - 8/10 - 10/12

Ladies : XS - S - M - L - XL

\* Only available in adult sizes

\*\* Only available in child sizes



These soft and cozy shorts fit snugly with a ribbed, fold-over waistband. They add warmth and texture to your rehearsal outfits. This piece is specially designed to retain its elasticity over time! Our soft knitted fabric delivers maximum comfort and a perfect fit.

Knitted acrylic elastane



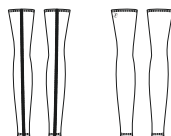
## ATTITUDE

Children : 4/8 - 8/12

Ladies : XS/S - M/L

\* Only available in adult sizes

\*\* Only available in child sizes



At the barre or in the air, your legs will be cozy in these classic leg warmers. The soft elastic cuff around the thighs helps keep them in place, even during your most intense rehearsals. Our soft knitted fabric delivers maximum comfort and a perfect fit.

Attitude child: 12'' - 30 cm  
Attitude adult: 18'' - 45 cm

Knitted acrylic elastane





## GIPSY



Children : 4/6 - 6/8 - 8/10 - 10/12  
 Ladies : XS - S - M - L - XL\*\* - XXL\*\*  
 \* Not available in sizes 4/6 and 6/8  
 \*\* Available in black only

Gipsy short features soft microfiber elastane fabric and a comfortable elastic waistband.  
 Microfiber



## MACARON



Children : 6/8 - 8/10 - 10/12  
 Ladies : XS - S - M - L

These hotpant shorts provide a flattering silhouette in the studio or on stage.  
 Microfiber



## ARIELLE



Children : 6/8 - 8/10 - 10/12  
 Ladies : XS - S - M - L

Booty shorts that fit at the natural waistline. Perfect for any dance style.  
 Microfiber



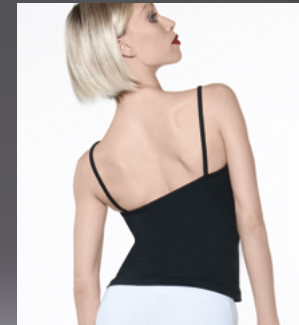
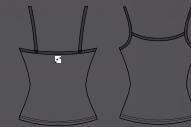
# ACTIVE WEAR

## ANA



Children : 4/6 - 6/8 - 8/10 - 10/12  
 Ladies : XS - S - M - L

Simple, soft, microfiber  
 camisole.  
 Microfiber - Front lining







## IKITA

Children : 4/6 - 6/8 - 8/10 - 10/12  
Ladies : XS - S - M - L

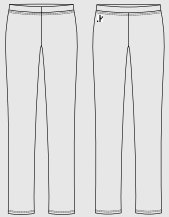
Simple, elegant, classic short  
camisole top with comfortable  
waistband.  
Microfiber- Front lining



## IRIS

Children : 4/6 - 6/8 - 8/10 - 10/12  
Ladies : XS - S - M - L

Classic U-cut jazz pants.  
Comfortable elastic waist  
band and soft microfiber.  
Microfiber



MORE COLOR CHOICE

Boost your dance attire selection with our More Color Choice program! Wear Moi invites you to choose from a wide range of current designs for children, women, and men in a spectrum of colors beyond those in our catalog.

Learn more about the program!

- Order quantity: multiples of 3 units per size and color
- Only apply to options not already available in our catalog
- Delivery: 3 to 4 weeks
- Wide selection of men’s and women’s styles

Choose Color & Choose style - Microfiber

WHITE

BEIGE

MOKA

WALNUT

CHOCOLATE

SKY

PACIFIC

FRENCH BLUE

AZUR BLUE

ROYAL BLUE

NAVY

LILAC

PURPLE

PRUNE

PEACH

CORAL

BALLET PINK

PINK

ROSE

FUSHIA

RED

BURGUNDY

MIMOSA

MINT

EMERALD

FOREST GREEN

LIGHT GREY

DARK GREY

BLACK

	ABBIE ARABESQUE ANGELIQUE CABRIOLE CANDIDE CAPRICE* CONCERTO CYPRES* DOLORES* EMERAUDE FAUSTINE GALATE	GENTIANE HARLOW* LAVANDE LOVINA MARIE MAUVE MELISSE* NEOMA* PAGE PIROUETTE THALLIA		ARDESIA* AZUREA* BAGATELLE* BALKALA* BALLERINE* FANTASIE*		
	ALEGRO* APOLO* DELIA* DOLLY* DAPHNE* MAGDA* MELINA*	ANA IKITA NAYA		IRIS		DIV42
	DAPHNE* MAGDA* MELINA*	ARIELLE GIPSY MACARON				DIV117
	ALPIN CONRAD HAXO MERCURY	MARCEAU ODEON		ATLAS CAPRI TANGO		CENTAUR HORACIO IGOR JASON LUPIN OBERON VERSAO

(\*) Not available in walnut and chocolate

Choose Color & Choose style - Cotton

WHITE

WALNUT

NAVY

SKY

LILAC

BALLET PINK

GREY

BLACK

	ETUDE GLUSSADE OPERA PAVANE PRELUDE REVERENCE SARABANDE		ADAGE* ENTRECHAT*
--	---	--	----------------------

(\*) Not available in walnut



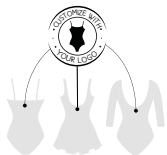


## YOUR LOGO YOUR WAY



Wear Moi allow you to help dance schools to customize their uniforms by incorporating their logos onto a curated selection of iconic Wear Moi products, available in a diverse range of styles, sizes, and colors for children, women, and men.

**Wear Moi**



- Order minimum: multiples of 3 units per size and color
- No setup fee
- School logo will replace the Wear Moi logo
- One silkscreen color print



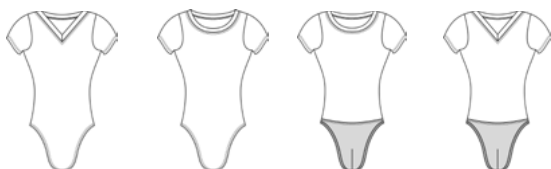
*Abbie*      *Concerto*      *Cabriole*      *Emeraude*      *Faustine*      *Candide*



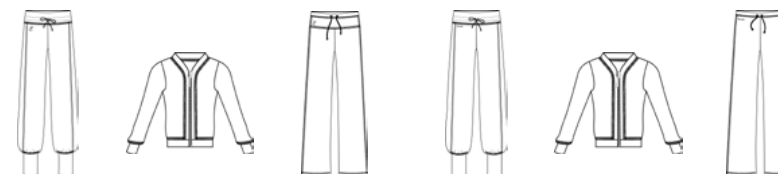
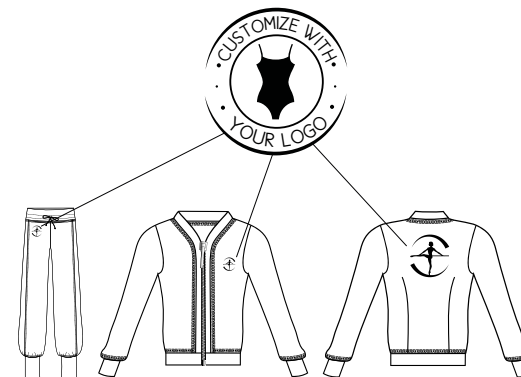
*Pirouette*      *Bagatelle*      *Ballerine*      *Balkala*      *Ardesia*



*Mercury*      *Conrad*      *Alpin*      *Haxo*



*Centaur*      *Lupin*      *Jason*      *Horacio*



*Opus*      *Illade*      *Penelope*      *Belem*      *Malone*      *Preston*

## HOW TO ORDER:

1 - Choose the product(s) you want to personalize from the eligible styles.

2 - Contact your sales representative and provide them with the following details:

- Studio/School name
- Product: Specify the style name and color.
- Artwork: Submit in either .jpg or .pdf format.
- Color: Choose single-color printing. Preferred options are White, Black, or Silver.

For additional colors, include a Pantone color number. Learn more about Pantone colors at their website.

<https://www.pantone.com/articles/color-palettes/convergence-color-palette/>

3 - You will receive a PDF file with all the details from our customer service

4 - Please review and approve it to confirm your order

SIZE	PRODUCT TYPE	MAXIMUM DIMENSION	PRICE IN EUR € / LOGO	PRICE IN US \$ / LOGO	PRICE IN CAD \$ / LOGO
SMALL LOGO	LEOTARDS, DRESSES, T-SHIRTS	1 inch / 25 mm	0,75€	\$ 0.75	\$ 1.00
MEDIUM LOGO (Front)	JACKETS	2 inch / 55 mm	1,50€	\$ 1.50	\$ 2.00
	PANTS	2 inch / 55 mm			
LARGE LOGO (Back)	JACKETS (Child)	4 inch x 7 inch 100 mm x 180 mm	3,00€	\$ 3.00	\$ 4.00
	JACKETS (Adult)	5 inch x 10 inch 130 mm x 260 mm			



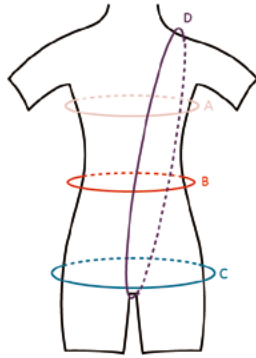
## INDEX

ALOES	p 7
ANA	p 23
ARIELLE	p 22
ATTITUDE	p 20
CALOU	p 7
CAPELLA	p 6
CEYLAN	p 11
CRISTAL	p 12
CRYSALIDE	p 13
GIPSY	p 22
IKITA	p 24
ILIADE	p 16
IRIS	p 24
IZALIA	p 12
MACARON	p 22
MENUET	p 20
NAYA	p 9
OPUS	p 16
PALOMINO	p 15

PANDORE	p 15
PATIENCE	p 14
PENELOPE	p 16
PIVOINE	p 15
SONATE	p 20
SUPERBE	p 4
SYRMA	p 4
TIARA	p 10
TULIPE	p 4
UTAMI	p 13
MORE COLOR CHOICE	p 26-27
YOUR LOGO YOUR WAY	p 28-29
SIZE CHART	p 32-33



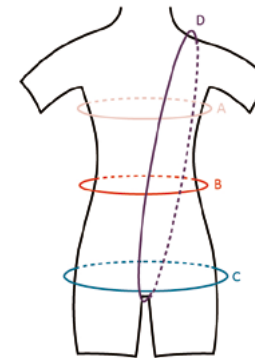
## SIZE CHART - METRIC MEASUREMENT



GIRL SIZES	AGE 2/4	AGE 4/6	AGE 6/8	AGE 8/10	AGE 10/12	AGE 12/14
Height (Size)	90 - 105 cm	100 - 115 cm	110 - 125 cm	120 - 135 cm	130 - 145 cm	140 - 155 cm
WEIGHT:	10 - 15 kg	15 - 20 kg	17 - 27 kg	25 - 35 kg	30 - 40 kg	35 - 45 kg
A : Chest Width	50 - 55 cm	55 - 60 cm	60 - 65 cm	65 - 70 cm	70 - 75 cm	75 - 80 cm
B : Waist	45 - 50 cm	49 - 54 cm	50 - 55 cm	52 - 57 cm	53 - 58 cm	55 - 60 cm
C : Hips	50 - 55 cm	55 - 60 cm	60 - 65 cm	65 - 70 cm	72 - 78 cm	78 - 83 cm
D : Girth	80 - 90 cm	90 - 100 cm	100 - 110 cm	110 - 120 cm	115 - 125 cm	125 - 135 cm

WOMEN SIZES	XS	S	M	L	XL	XXL
Height (Size)	150 - 165 cm	160 - 175 cm	165 - 175 cm	165 - 180 cm	165 - 180 cm	165 - 185 cm
WEIGHT:	40 - 50 kg	45 - 55 kg	50 - 60 kg	60 - 70 kg	70 - 80 kg	80 - 90 kg
A : Chest Width	80 - 85 cm	85 - 90 cm	90 - 95 cm	95 - 100 cm	100 - 105 cm	105 - 110 cm
B : Waist	55 - 60 cm	60 - 65 cm	65 - 70 cm	70 - 75 cm	75 - 80 cm	80 - 85 cm
C : Hips	82 - 88 cm	87 - 92 cm	92 - 97 cm	95 - 100 cm	100 - 105 cm	105 - 110 cm
D : Girth	132 - 140 cm	140 - 148 cm	148 - 156 cm	155 - 164 cm	164 - 172 cm	168 - 176 cm

## SIZE CHART - IMPERIAL MEASUREMENT



GIRL SIZES	AGE 2/4	AGE 4/6	AGE 6/8	AGE 8/10	AGE 10/12	AGE 12/14
Height (Size)	3'1" - 3'5"	3'3" - 3'9"	3'7" - 4'1"	3'11" - 4'5"	4'3" - 4'9"	4'7" - 5'1"
WEIGHT:	22 - 33 lbs	33 - 44 lbs	37 - 59 lbs	55 - 77 lbs	66 - 88 lbs	77 - 99 lbs
A : Chest Width	19 - 21"	21 - 23"	23 - 25"	25 - 27"	27 - 29"	29 - 31"
B : Waist	18 - 20"	19 - 21"	20 - 22"	21 - 23"	21 - 23"	22 - 24"
C : Hips	20 - 22"	22 - 24"	24 - 26"	26 - 28"	29 - 31"	31 - 33"
D : Girth	31 - 35"	35 - 39"	39 - 43"	43 - 47"	45 - 49"	49 - 53"

WOMEN SIZES	XS	S	M	L	XL	XXL
Height (Size)	4'11" - 5'5"	5'3" - 5'9"	5'5" - 5'9"	5'5" - 5'11"	5'5" - 5'11"	5'5" - 6'
WEIGHT:	88 - 110 lbs	99 - 121 lbs	110 - 132 lbs	132 - 154 lbs	154 - 176 lbs	176 - 198 lbs
A : Chest Width	31 - 33"	33 - 35"	35 - 37"	37 - 39"	39 - 41"	41 - 43"
B : Waist	21 - 24"	24 - 26"	26 - 28"	28 - 30"	30 - 32"	32 - 34"
C : Hips	33 - 35"	35 - 37"	37 - 39"	38 - 40"	39 - 41"	41 - 43"
D : Girth	52 - 55"	55 - 58"	58 - 62"	62 - 65"	65 - 68"	66 - 69"

### Wear Moi

375 Avenue St Just  
83130 La Garde - FRANCE  
Phone : +33 (0) 498 01 6000 - Fax : +33 (0) 498 01 6001  
Email : [info@wearmoi.com](mailto:info@wearmoi.com)

### Wear Moi (North, Central and South America)

3352 N Broadway - Chicago IL 60657 - USA  
Phone : +1 (773) 850 3119 - Fax : +1 (773) 901 2167  
Email : [usa@wearmoi.com](mailto:usa@wearmoi.com)

Wear Mei

Designed in France