



# 2023 Dress Code Solutions

Select the perfect combination of styles, colors, and accessories to create a studio dress code that is as unique as your studio.

Please refer to the Ballet Rosa 2022  
Academy Catalog for full photos  
and additional information.

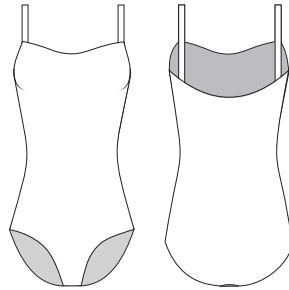
# Choose your Styles

Select the perfect leotard styles for your studio dress code by choosing from a range of high quality leotards. Our **Modern Classics** are suitable for all ages, whereas our **Aspire Collection** styles are best for more advanced levels.

# Modern Classics Camisole Leotards

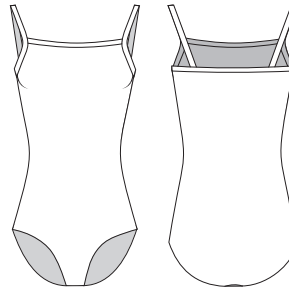
Sizes:  
Child 4 > 12  
Adult 36 > 44

**Gilliane**  
Page 56



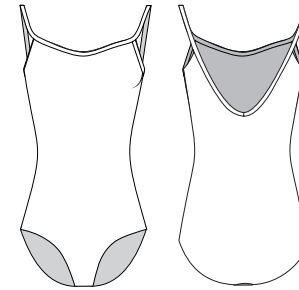
Camisole leotard with gently scooped mid-back, delicate scoop front, and satiny elastic straps.

**Valérie**  
Page 57



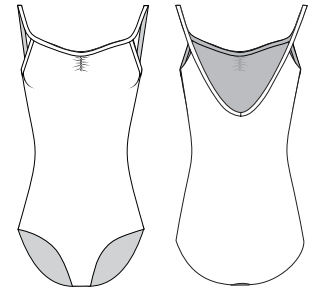
Camisole leotard with modest straight neckline, straight mid-back, and fine straps.

**Candice**  
Page 52



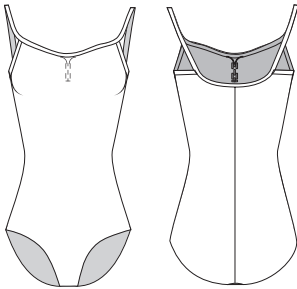
Camisole leotard with subtle scoop front and V-back.

**Capucine**  
Page 59



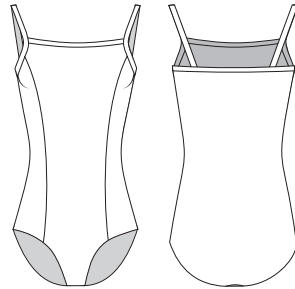
Camisole leotard with ruched front and V-back.

**Alodia**  
Page 58



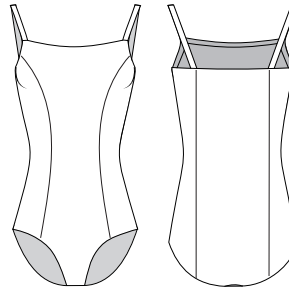
Camisole leotard with scooped front, adjustable front ruche and square mid-back with center back seam.

**Anaya**  
Page 60



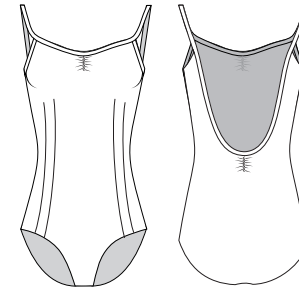
Camisole leotard with square neckline, straight mid-back, and front princess seams.

**Aube**  
Page 61



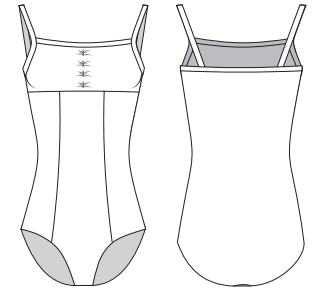
Camisole strap leotard with front and back princess seams, scooped front, and straight mid-back.

**Jia**  
Page 54



Adjustable front and back pinch camisole leotard with double princess seams that extend from the legline to bust.

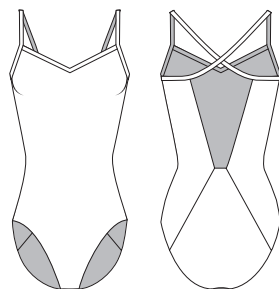
**Grazia**  
Page 63



Camisole leotard with front princess seams, a straight mid-back, and an empire panel with gather. Adult sizes feature removable bust padding.

Sizes:  
Child 8 > 12  
Adult 36 > 44

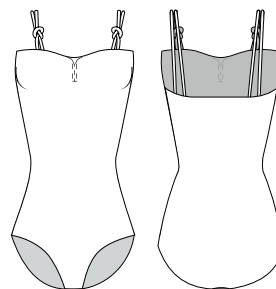
**Eliette**  
Page 27



**Maya Legline**  
Standard high cut

Camisole leotard with cross straps at the back and delicate V-front. The seamless open back finishes with diagonal seams and a squared off line at the mid-low back.

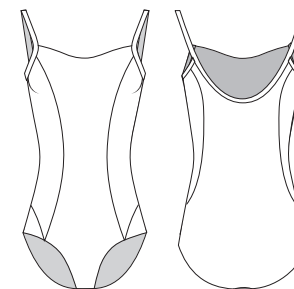
**Zella**  
Page 31



**Alina Legline**  
Standard ballet cut

Knotted double camisole strap leotard with adjustable front ruche and straight mid back.

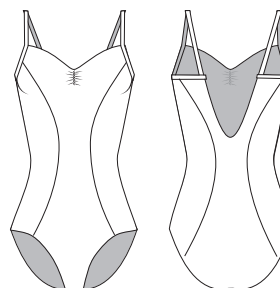
**Kali**  
Page 18



**Polina Legline**  
Converging seams connect to a point at the hip

Camisole leotard with seamless scooped neckline and scooped mid-low back. Front princess seams meet seams wrapped from the back at the hip bone.

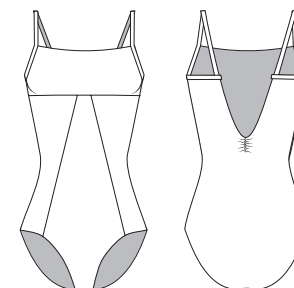
**Jania**  
Page 13



**Margot Legline**  
High cut, seamless, squared off

Camisole leotard with twisted front ruche, seamless neckline, a delicately scooped back, and violin-shaped princess seams on the front and back.

**Lovette**  
Page 10



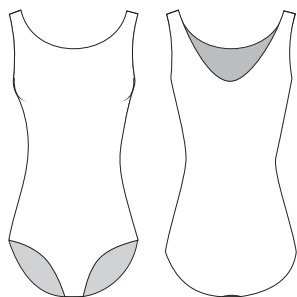
**Margot Legline**  
High cut, seamless, squared off

Camisole leotard with ruched back and inverted diagonal front seams extending from the empire waistline to the top of the high cut, squared off legline.

# Modern Classics Tank Leotards

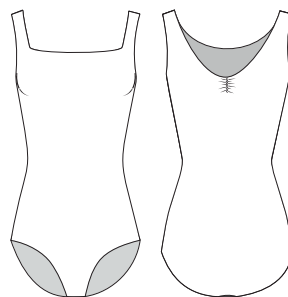
Sizes:  
Child 4 > 12  
Adult 36 > 44

**Maité**  
Page 46



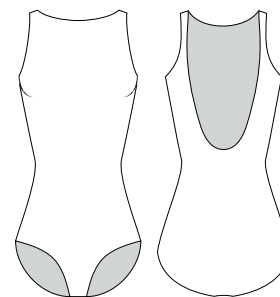
Round neck, scoop mid-high back tank leotard.

**Delphine**  
Page 50



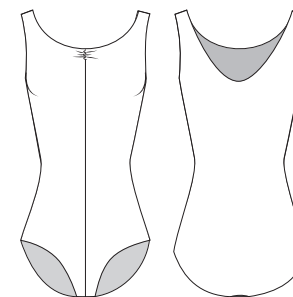
Square neck tank leotard with mid-back ruche.

**Belle**  
Page 42



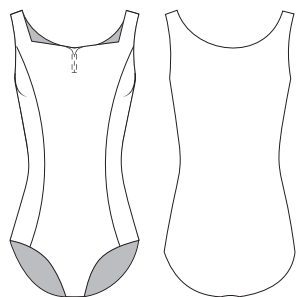
Boatneck tank leotard with a mid-low scoop back.

**Elyane**  
Page 47



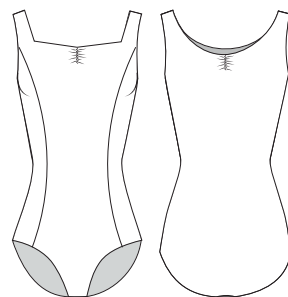
Scoop front and round mid-high back tank leotard with a central front seam and twist front ruching accent.

**Isla**  
Page 51



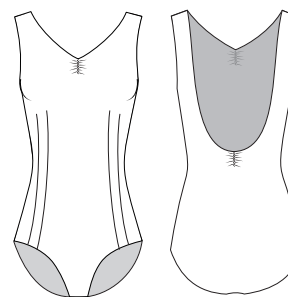
Tank leotard with adjustable ruched front, front princess seams, and mid-high scooped back.

**Luana**  
Page 48



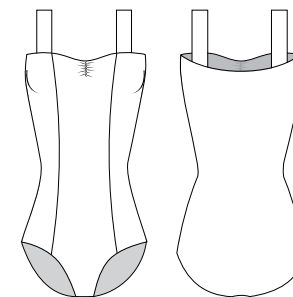
Tank leotard with adjustable front and back ruche, and front princess seams.

**Dorah**  
Page 44



Tank leotard with adjustable front and back ruche, and double princess seams on the front.

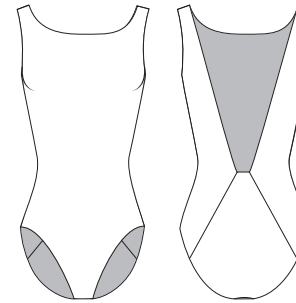
**Arya**  
Page 40



Wide strap leotard with pinch front, square mid-back, and full front princess seams.

Sizes:  
Child 8 > 12  
Adult 36 > 44

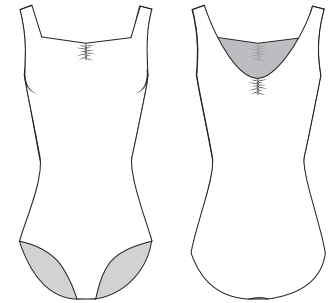
**Darie**  
Page 26



**Maya Legline**  
Standard high cut

Seamless boatneck tank leotard with silhouette seam lines on the back and a seamless square mid-low back cut.

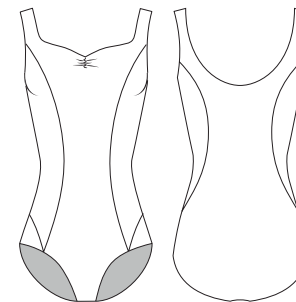
**Yolanda**  
Page 32



**Alina Legline**  
Standard ballet cut

Classic tank leotard with a ruched front and back.

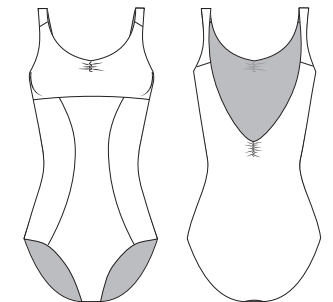
**Riva**  
Page 19



**Polina Legline**  
Converging seams connect to a point at the hip

Scooped neck, swirl ruche, tank leotard with broad scooped mid-back. Front princess seams meet seams wrapped from the back at the hip bone.

**Cannelle**  
Page 12



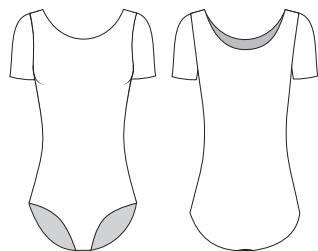
**Margot Legline**  
High cut, seamless, squared off

Fine tank strap leotard with a seamless V-front pinch neckline, princess seams on the front and a wide medium-low back finished with ruche.

# Modern Classics Sleeved Leotards

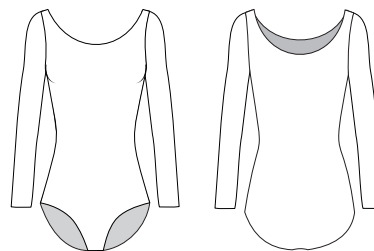
Sizes:  
Child 4 > 12  
Adult 36 > 44

**Haline**  
Page 64



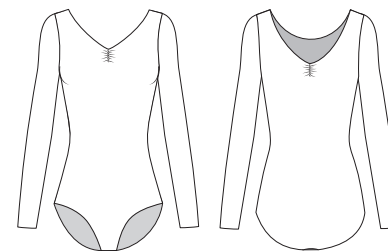
Short sleeve leotard with round neckline, scoop mid-high back, and ballet cut leg line.

**Evelyn**  
Page 66



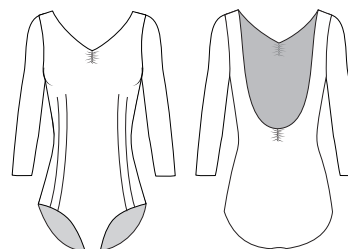
Long sleeve leotard with a scoop front and back.

**Armel**  
Page 65



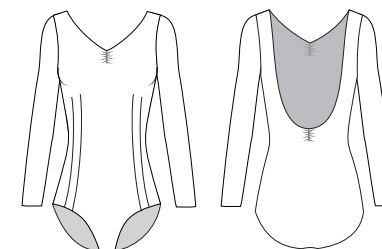
Ruched front and back long sleeve leotard.

**Binna**  
Page 69



3/4 sleeve leotard with double princess seams, and adjustable front and back pinch.

**Jae**  
Page 68

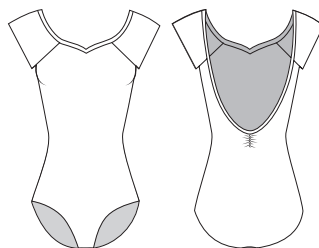


Long sleeve leotard with double princess seams, and adjustable front and back pinch.



Sizes:  
Child 8 > 12  
Adult 36 > 44

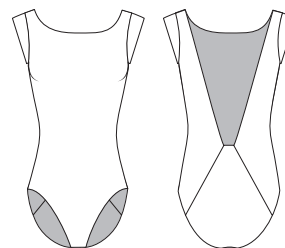
**Frida**  
Page 30



**Alina Legline**  
Standard ballet cut

Cap sleeve leotard with raglan sleeve, a broad V-front neckline, and wide medium-low back finished with ruche.

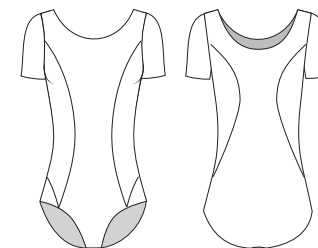
**Fauve**  
Page 22



**Maya Legline**  
Standard high cut

Seamless boatneck cap sleeve leotard with seamless mid-low squared cut and flattering back seam detail.

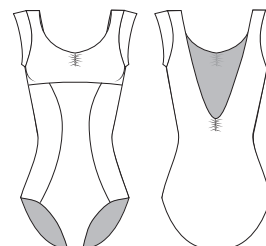
**Tori**  
Page 17



**Polina Legline**  
Converging seams connect to a point at the hip

Short sleeved leotard with broad, seamless, scooped neckline and square mid-back. Front princess seams join back seams that wrap to the hip.

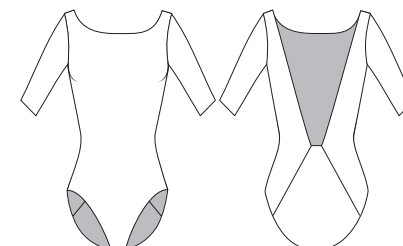
**Itzel**  
Page 11



**Margot Legline**  
High cut, seamless, squared off

Ruched front and back leotard with empire waist, seamless sweetheart neckline, and princess seams.

**Azora**  
Page 25



**Maya Legline**  
Standard high cut

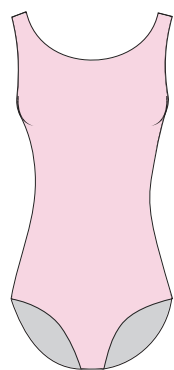
1/2 sleeve boatneck leotard with square mid-low back and silhouetted back seams.

# Choose your Colors

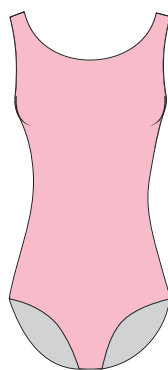
Ballet Rosa offers over 20 carefully chosen Italian microfiber colors to help you create a dress code with an attractive range of hues.

Additional colors may be requested at no additional cost

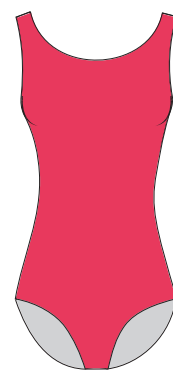
# Modern Classics Microfiber Colors



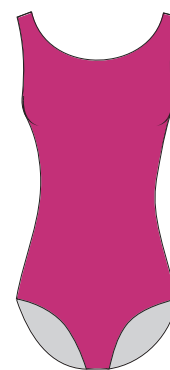
French Rose 93



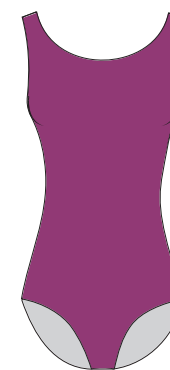
Rose Ballet 90



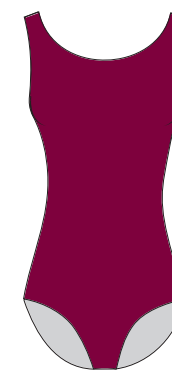
Poppy 84



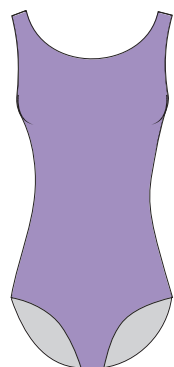
Cyclamen 57



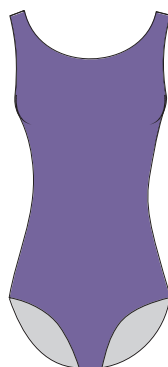
Medium Orchid 96



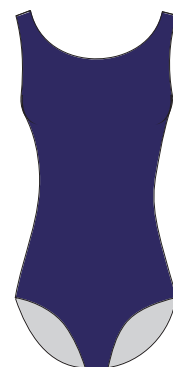
Ruby 82



Iris 86



True Lavender 81



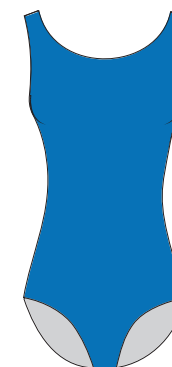
Purple 80



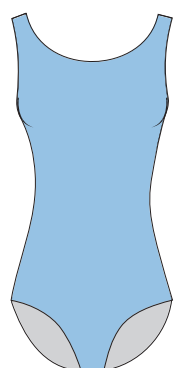
Marine 07



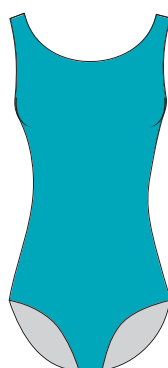
Snorkel Blue 83



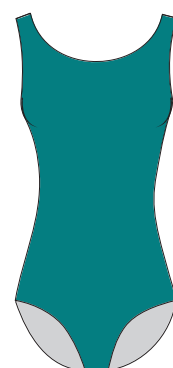
French Blue 95



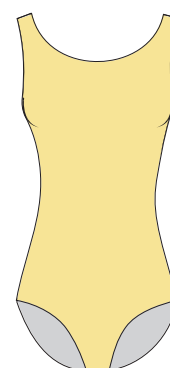
Angel Blue 88



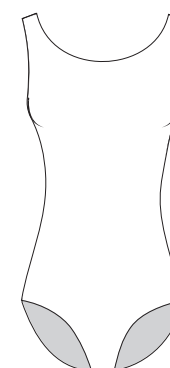
Turquoise 38



Teal 74



Buttercup 94



Blanc 02

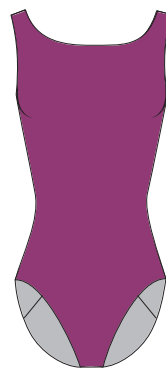


Noir 01

Our Modern Classics microfiber is made in Italy and is offered in 18 colors, so that dancers from beginner to advanced can look their best.

All colors come fully front lined, and our lighter shades come fully lined in the front and back (French Rose, Rose Ballet, Iris, Angel Blue, Buttercup, and Blanc).

# Aspire Collection Microfiber Colors



Medium Orchid 96



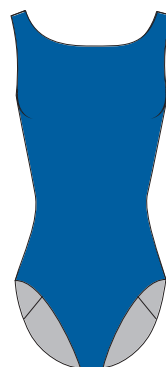
Ruby 82



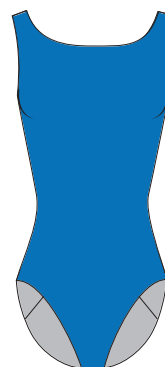
Viola 73



Marine 07



Snorkel Blue 83



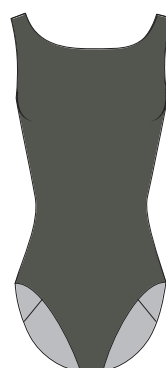
French Blue 95



Encre Bleu 77



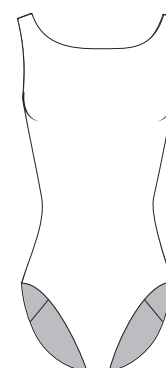
Teal 74



Olive 89



Gris 47



Blanc 02



Noir 01

All Aspire Collection styles are available in a sophisticated range of 12 microfiber colors, made in Italy.

All colors come fully front lined, and our blanc fabric comes fully lined in the front and back.

## Pair with a Skirt

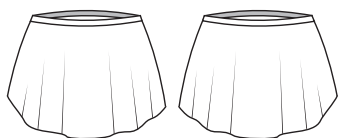
Complement your leotard choice with a skirt!  
Choose from either mesh or chiffon styles,  
depending on your colors and desired look.

## Stretch Mesh Skirts

Our soft four-way stretch mesh is made in Spain and comes in an impressive range of 27 gorgeous colors.

### Skylar

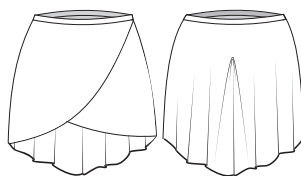
Page 72



Pull-on skirt with matching fabric stretch waistband and a rolled hem.

### Bethanie

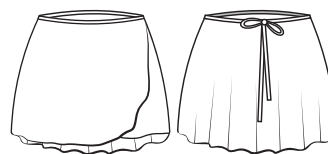
Page 78



Pull-on mock wrap skirt with stretch waistband and a rolled hem.

### Tomomi

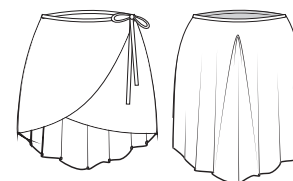
Page 76



Wrap skirt with rolled hem.

### Stella

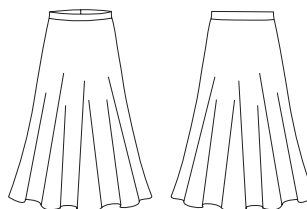
Page 77



High-low wrap skirt with rolled hem.

### Faith

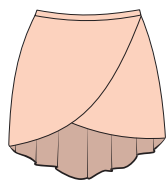
Page 75



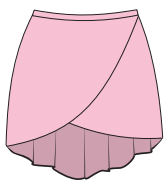
Pull-on, mid-calf length skirt with stretch waistband.

The Faith skirt is available in Noir only.

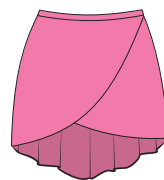
# Skirts Stretch Mesh Colors



Poudré 60



Rose 03



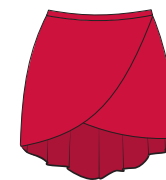
Azalée 29



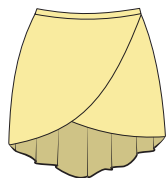
Orchidée 13



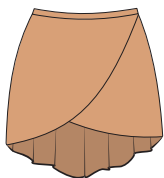
Bordeaux 26



Rojo 17



Jaune Paille 06



Chair 30



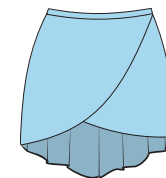
Café au Lait 72



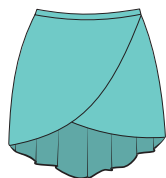
Olive 89



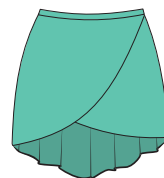
Encre Bleu 77



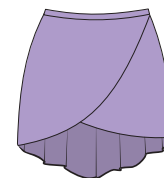
Ciel 04



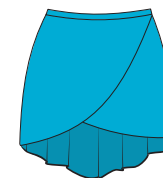
Aqua 15



Vert Emeraude 28



Parme 12



Lagon 23



Royal 16



Marine 07



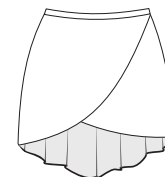
Viola 73



Prunus 08



Gris 47



Blanc 02



Noir 01

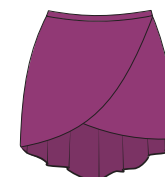
## New Colors



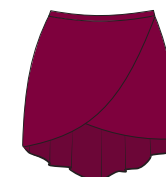
French Blue 95



Teal 74



Medium Orchid 96



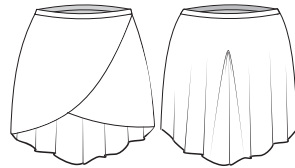
Ruby 82

## Chiffon Skirts

Our high quality chiffon is made in Portugal and adds a sweet and delicate touch to any dress code.

### Alyssa

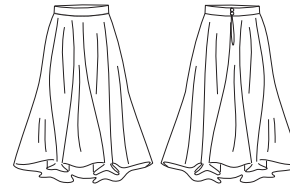
Page 74



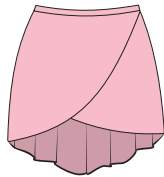
Tulip front pull-on skirt with stretch waistband.

### Kumi

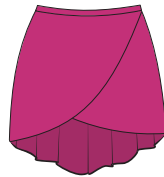
Page 79



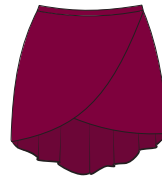
3/4 length skirt with adjustable two button waist.



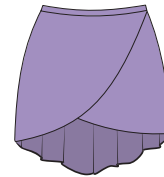
Rose Ballet 90



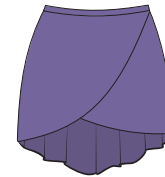
Cyclamen 57



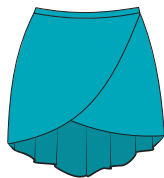
Ruby 82



Iris 86



True Lavender 81



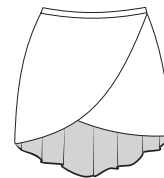
Turquoise 38



Snorkel Blue 83



Marine 07



Blanc 02



Noir 01



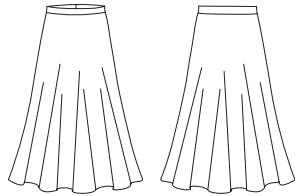
## Character Skirts

Our character skirts are made of fabrics that create the weight and quality needed for beautiful movement. For this reason, our Matte Lycra and Interlock skirts are not meant to be a color match to our microfiber leotards. Choose basic black (noir) or accessorize with other colors if desired.

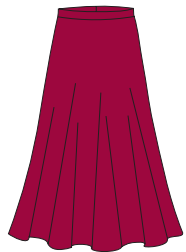
### Matte Lycra

**Alix**

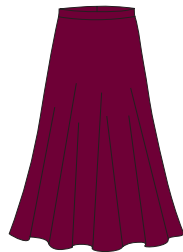
Page 81



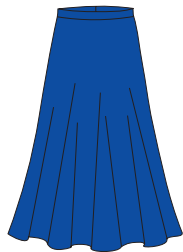
3/4 length rehearsal/character skirt  
with stretch waistband.



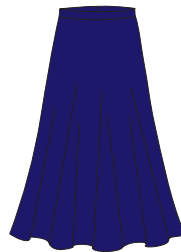
Acero 14



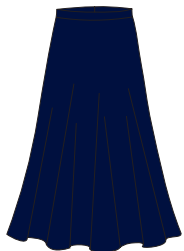
Bordeaux 26



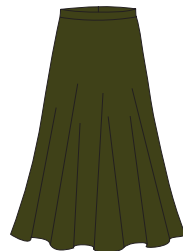
Royal 16



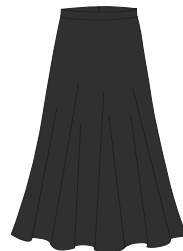
Indaco 44



Marine 07



Kakhi 19

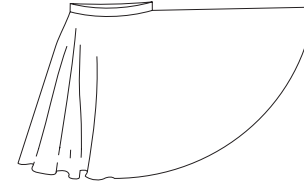


Noir 01

### Interlock

**Masako**

Page 80



3/4 length character skirt  
with elastic waist band



Noir 01

# Additional Accessories

Add our most popular dress code accessories to your classes, such as a matching microfiber wrap top for chilly days, an elastic belt to help teach alignment, or a pair of shorts for coverup and other genres of dance.

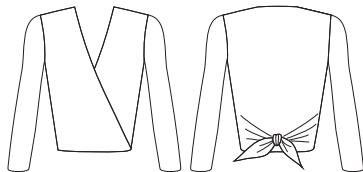
Additional products and accessories are pictured in our Academy Catalog, such as leggings, tights, warm-ups, legwarmers, etc.

## Microfiber

---

**Josée**

Page 96



Waist-length 3/4 sleeve  
wrap top

**Malika**

Page 106



V-front booty shorts

## Polyamide Lycra

---

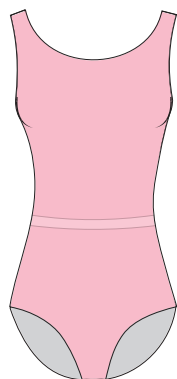
**Cibelle**

Page 110

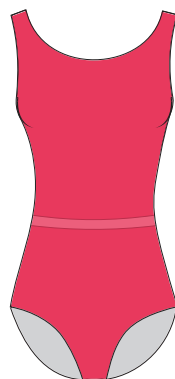


Stretchy elastic belts ideal  
for class uniforms

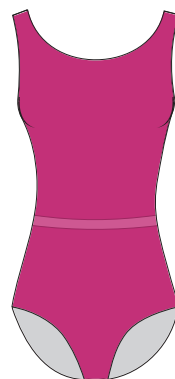
## Belt (Cibelle) Color Options



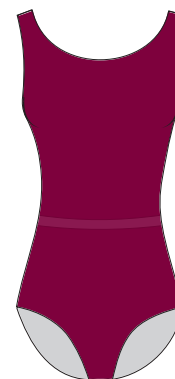
Rose Ballet 90



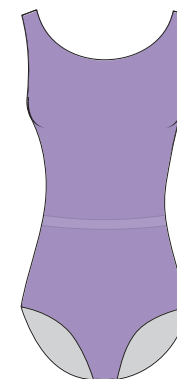
Poppy 84



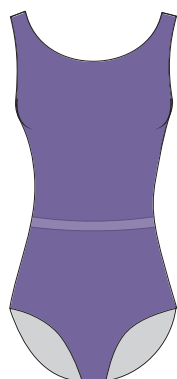
Cyclamen 57



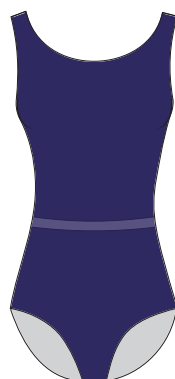
Ruby 82



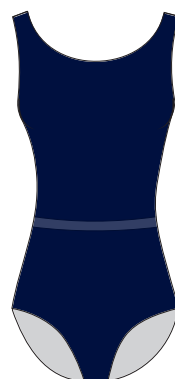
Iris 86



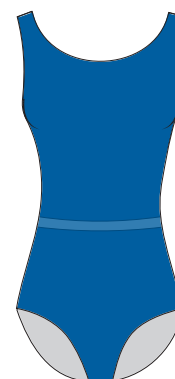
True Lavender 81



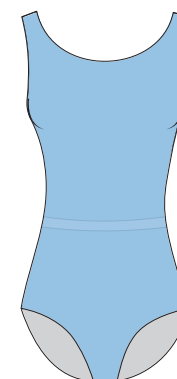
Purple 80



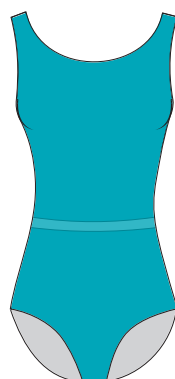
Marine 07



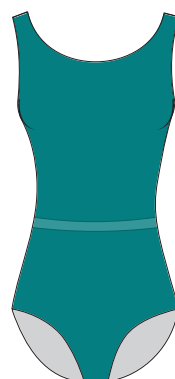
Snorkel Blue 83



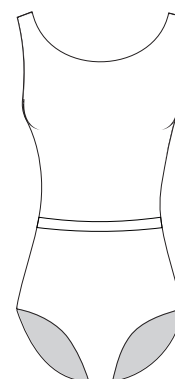
Angel Blue 88



Turquoise 38



Teal 74



Blanc 02



Noir 01

Our stretch elastic waistband is a beautiful matching accessory for 14 of our regulation-color microfiber fabrics. Our belts are satiny on one side and matte on the other and come in 6 sizes.

# Color Matching Chart

In order to see if you can match a mesh skirt, chiffon skirt, or elastic belt with your leotard color, use our color matching chart.

Microfiber Color	Matching Mesh Color	Coordinating Mesh Color *	Matching Chiffon Color	Matching Belt Color
01 Noir	01 Noir		01 Noir	01 Noir
02 Blanc	02 Blanc		02 Blanc	02 Blanc
07 Marine	07 Marine		07 Marine	07 Marine
38 Turquoise			38 Turquoise	38 Turquoise
47 Gris	47 Gris			
57 Cyclamen			57 Cyclamen	57 Cyclamen
73 Viola	73 Viola			
74 Teal	74 Teal <span>new</span>			74 Teal
77 Encre Bleu	77 Encre Bleu			
80 Purple		08 Prunus		80 Purple
81 True Lavender			81 True Lavender	81 True Lavender
82 Ruby	82 Ruby • <span>new</span>		82 Ruby	82 Ruby
83 Snorkel Blue			83 Snorkel Blue	83 Snorkel Blue
84 Poppy				84 Poppy
86 Iris			86 Iris	86 Iris
88 Angel Blue		04 Ciel		88 Angel Blue
89 Olive	89 Olive			
90 Rose Ballet			90 Rose Ballet	90 Rose Ballet
93 French Rose		03 Rose		
94 Buttercup		06 Jaune Paille		
95 French Blue	95 French Blue <span>new</span>			
96 Medium Orchid	96 Medium Orchid <span>new</span>			

\* Coordinating mesh is not an exact match to microfiber but does still work well. If choosing a “coordinating mesh” color we recommend choosing an elastic waistband skirt such as Bethanie, Tomomi, or Stella. This is because our Skylar skirts are made with a fabric waistband that will match the mesh color, rather than the microfiber leotard.

## Get inspired by finished dress codes

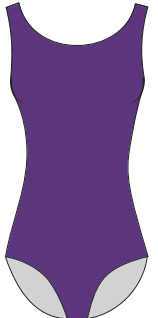
Want to see how others have done it? We've included three different versions of studio dress codes: one with leotards only, one with leotards plus skirts, and a third with leotards and matching waist belts.

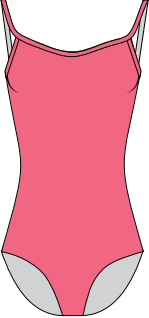
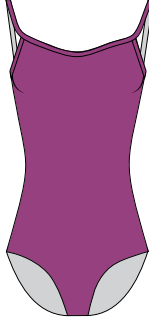
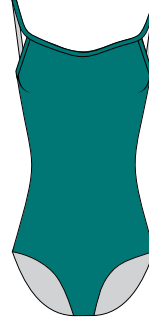
Ballet Rosa products are available exclusively from our authorized retailers who can assist you in creating the perfect dress code for your studio!

# Leotards Only

## Studio Dress Code Example

<b>Tots 1</b> Rose Ballet 90	<b>Tots 2</b> Blanc 02	<b>Pre-Ballet 1</b> Buttercup 94	<b>Pre-Ballet 2</b> Iris 86
			
Haline Short Sleeve Leotard			

<b>Ballet 1A</b> Angel Blue 88	<b>Ballet 1B</b> Cyclamen 57	<b>Ballet 2A</b> Purple 80	<b>Ballet 2B</b> Ruby 82
			
Maité Tank Leotard			

<b>Ballet 3</b> Poppy 84	<b>Ballet 4</b> Medium Orchid 96	<b>Ballet 5</b> Teal 74
		
Candice Camisole Leotard		

<b>Academy 1</b> French Blue 95	<b>Academy 2</b> Olive 89	<b>Academy 3</b> Viola 73
		
Frida Cap Sleeve Leotard	Kali Camisole Leotard	Lovette Camisole Leotard

<b>Advanced</b> Noir 01

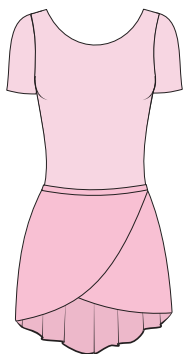
Jania Camisole Leotard

# Leotards + Skirts

## Studio Dress Code Example

### Tots 1

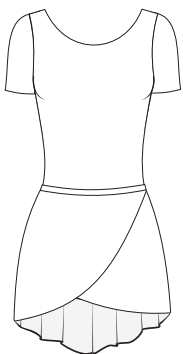
Haline Leotard  
French Rose 93



Bethanie Skirt  
Rose 03

### Tots 2

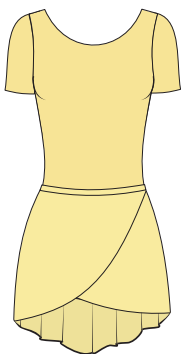
Haline Leotard  
Blanc 02



Bethanie Skirt  
Blanc 02

### Pre-Ballet 1

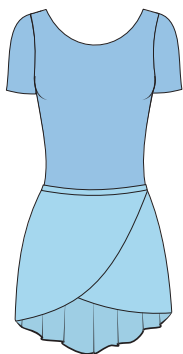
Haline Leotard  
Buttercup 94



Bethanie Skirt  
Jaune Paille 06

### Pre-Ballet 2

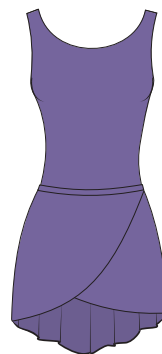
Haline Leotard  
Angel Blue 88



Bethanie Skirt  
Ciel 04

### Ballet 1A

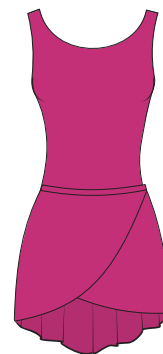
Maité Leotard  
True Lavender 81



Alyssa Skirt  
True Lavender 81

### Ballet 1B

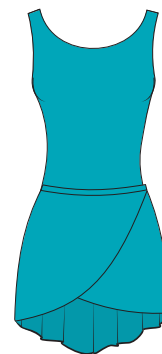
Maité Leotard  
Cyclamen 57



Alyssa Skirt  
Cyclamen 57

### Ballet 2A

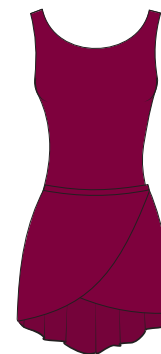
Maité Leotard  
Turquoise 38



Alyssa Skirt  
Turquoise 38

### Ballet 2B

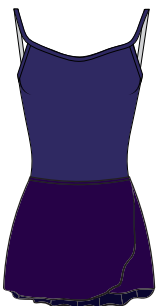
Maité Leotard  
Ruby 82



Alyssa Skirt  
Ruby 82

### Ballet 3

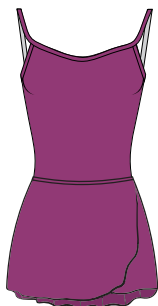
Candice  
Purple 80



Tomomi Skirt  
Prunus 08

### Ballet 4

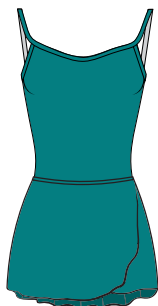
Candice  
Medium Orchid 96



Tomomi Skirt  
Medium Orchid 96

### Ballet 5

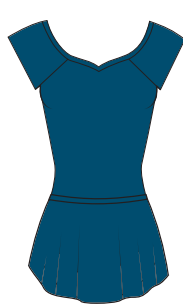
Candice  
Teal 74



Tomomi Skirt  
Teal 74

### Academy 1

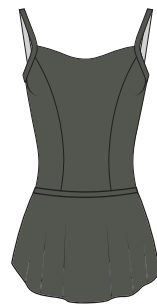
Frida  
Encre Bleu 77



Skylar Skirt  
Encre Bleu 77

### Academy 2

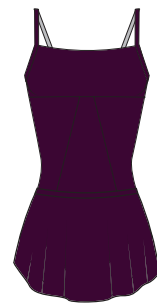
Kali  
Olive 89



Skylar Skirt  
Olive 89

### Academy 3

Lovette  
Viola 73



Skylar Skirt  
Viola 73

### Advanced

Jania  
Noir 01



Skylar Skirt  
Noir 01

# Leotards + Belts

## Studio Dress Code Example

**Tots 1**  
Rose Ballet 90

**Tots 2**  
Blanc 02

**Pre-Ballet**  
Iris 86



Haline Short Sleeve Leotard

**Ballet 1A**  
Angel Blue 88

**Ballet 1B**  
Cyclamen 57

**Ballet 2A**  
Purple 80

**Ballet 2B**  
Turquoise 38

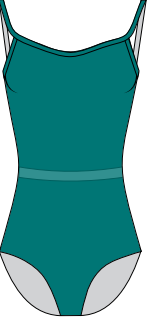
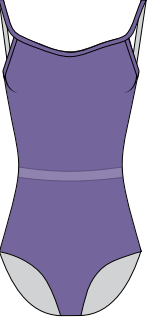
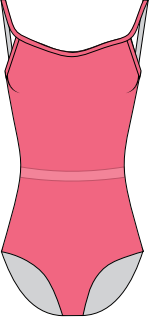


Maité Tank Leotard

**Ballet 3**  
Poppy 84

**Ballet 4**  
True Lavender 81

**Ballet 5**  
Teal 74



Candice Camisole Leotard

**Academy 1**  
Snorkel Blue 83

**Academy 2**  
Ruby 82

**Academy 3**  
Marine 07



Elyane Tank Leotard

**Academy 2**  
Ruby 82

**Academy 3**  
Marine 07

**Advanced**  
Noir 01



Gilliane Camisole Leotard

**Academy 3**  
Marine 07



Anaya Camisole Leotard





Ballet Rosa®

# Logo

## PROGRAM

**Customize your studio dress code  
with your own studio logo!**

Please contact your local Ballet Rosa  
retailer to learn how to add your logo  
to your dress code.





**BALLETROSA.COM**