

### LOVE MY SHOES BAG

Centre ribbon pull closure creates two separate chambers for either, one, or two pairs of shoes. Leave the centre ribbon untied and the bag transforms into a stylish satin yoga mat bag. Patent pending.

**B1241** Size: One Size  
9.5"W x 30.5"H  
(24.1cm x 77.5cm)  
Colours: BLK, IMT, PBH, PIC  
Content: 100% Polyester, exclusive of trim



**RECYCLED TOTE**  
**B172** Content: 100% Recycled Polyester  
Sizes: One Size (14.5" x 13.5")  
(36.83cm x 34.29cm)  
Colours: GRY/Grey

### TOTALLY CHARMING DANCE DUFFLE

**B158** Soft and dynamic with interior mesh pockets. Exterior front and side pockets. Pleated ends to maximise space. Ombre printed lining. Charms adorn zipper pulls.  
Size: One Size (22" x 12 1/2" x 12 1/2")  
(55.9cm x 31.7cm x 31.7cm)  
Colours: PPG/Poppin Grey  
Content: 100% Polyester, exclusive of trim



**FREEBIRD TOTE**  
**B119U** Cotton canvas exterior.  
Size: One Size (22" W x 16" H x 8" D)  
(55.8cm x 40.6cm x 20.3cm)  
Colours: BGY/Black/Grey  
Content: Cotton canvas/Polyester lining/  
Nylon Spandex & Polyurethane PU trim.

## DANCE ACCESSORIES



### SLIPPERS BACKPACK

**B122C** Insulated throughout.  
"This bag belongs to" ID tag.  
Size: One Size  
(7.25" W x 9" H x 4.75" D)  
(18.4cm W x 22.9cm H x 12.1cm D)  
Colours: BAL/Ballerina,  
PSK/Pink Sparkle  
Content: 100% Polyester



### POINTE SHOE BAG

**B185** Keeps your pointe shoes and accessories safely in one place. Sleek and stylish, this soft ventilated bag protects your shoes while keeping them dry. You can also use it for hair accessories, tights, socks, or keeping track of all those tiny lyrical shoes. Soft fabric is non-abrasive and washable.  
Size: One Size  
Colours: WHT/White  
Content: 100% Polyester, exclusive of trim



### SLOUCH HOBO BAG

**B113** Full length shoulder straps with metallic hardware, exterior grab handle and deep bucket interior.  
Size: One Size (18" W x 19.5" H x 8" D)  
(45.7cm x 49.5cm x 20.3cm)  
Colours: BLK/Black  
Content: 100% Nylon



### 'DANCE' DUFFLE BAG

**B81** Black webbing trim and handles with jacquard 'Love, Peace, Dance' pattern. Short handles with Velcro® keeper. Detachable padded shoulder strap.  
Size: One Size (18" W x 8" H x 5.5" D)  
(45.7cm x 20cm x 14cm)  
Colours: BLK/Black, HPK/Hot Pink  
Content: 100% Nylon



### MULTI-COMPARTMENT GEAR BAG

**B122** Sporty, multi-functional studio bag with multiple storage compartments for accessories. Silver hardware. Features hand-held and shoulder strap options.  
Size: One Size (17" W x 14.5" H x 7" D)  
(43.2cm x W 36.8cm H x 17.8cm D)  
Colours: BLK/Black  
Content: 100% Polyester



### SMOOTH OPERATOR SACK PACK

**B163** Side mesh pockets stretch. External back pocket. The top and front of the bag has a section of unlined mesh allowing for ventilation of contents.  
Size: One Size (15" x 10 1/2" x 5 3/4")  
(38.1cm x 26.7cm x 14.6cm)  
Colours: BRD/Black/Red  
Content: 100% Polyester exclusive of trim



### CHILDREN'S DANCE BAG

**B46C** Dance embroidery and piping trim on a bowling style bag for children.  
Size: One Size (14" W x 10" H x 6" D)  
(35.5cm x 25.5cm x 15.5cm)  
Colours: BLK/Black, PNK/Pink  
Content: 100% Polyester



### CHILDREN'S DUFFLE BAG

**B52C** With silk-screened 'Leaping Lena' logo. Includes 2 zip-close side compartments, 2 inside shoe pockets, adjustable shoulder strap and star shaped hardware.  
Size: One Size (15" W x 8" H x 8" D)  
(38.1cm x 20.3cm x 20.3cm)  
Colours: PNK/Pink  
Content: 100% Polyester



### 'DANCE' BOWLING BAG

**B80** 'Dance' print with contrast webbing trim. Includes zip-top opening with front external zip pocket and shoulder straps. Black PVC with bright pink lining.  
Size: One Size (16" W x 12" H x 5.75" D)  
(40.6cm x 30.5cm x 14.6cm)  
Colours: BLK/Black  
Content: PVC



### DANCE-HEART BAG

**B97C** Features sheer ruffles, heart shaped rhinestones and embroidered elements. 'Dance' lettering in embroidered heart. Heart shape zipper pulls.  
Size: One Size (11.5" W x 8.5" H x 6.25" D)  
(29.2cm x 21.6cm x 15.9cm)  
Colours: PNK/Pink  
Content: 100% Polyester



### PRIMA SHOPPER

**B165/B1651**  
Size: One Size (15" W x 12.5" H x 5" D)  
(38.1cm x 31.7cm x 12.7cm)  
Colours: B165 GRY/Grey, B1651 PRO/Pro Pink  
Content: 100% Nylon



### BREATH OF MESH AIR

**B186U**  
Size: One Size (37.5" Diameter x 3.5" D)  
(95.25cm Diameter x 8.89cm D)  
Colours: GRY/Grey  
Content: 100% Nylon, exclusive of trim




---

*New*

---

**HANAMI DUFFLE**

**B176C** Main compartment zips wide open to provide space for up to 4 pairs of shoes while dual-handles allow for convenient shoulder carry. Details include: front pocket, water holder, printed lining, name tag, and lace ruffle detail.

Sizes: One Size (14" x 12 ½" x 8")

(35.6cm x 31.7cm x 20.3cm)

Colours: Capezio Pink/Violet/CZV

Content: 100% Nylon, exclusive of trim




---

*New*

---

**HANAMI DUFFLE**

**B177C** Main compartment provides space for up to 4 pairs of shoes while dual-handles allow for convenient shoulder carry. Includes: front pocket, water holder, printed lining, name tag, and lace ruffle detail.

Sizes: One Size (14" x 12 ½" x 8")

(35.6cm x 31.7cm x 20.3cm)

Colours: BLK/Black

Content: 100% Nylon, exclusive of trim




---

*New*

---

**TECHNIQUE DUFFLE BAG**

**B180U** Super soft, stain resistant, diamond quilted with snap closure.

Transitions from duffle to shoulder silhouette.

Size: One Size (24" x 14.5" x 9")

(61cm x 36.8cm x 22.9cm)

Colours: NOI/Noir

Content: 100% Nylon, exclusive of trim





**NYLON SATIN RIBBON**  
7/8" Size: 3 yards (per order)  
Colours: EUR/European Pink



**SUEDE POINTE COVERS**  
A piece of suede for individual attachment on pointe shoes.  
2 pieces per package.  
SC1 Sizes: One Size  
Colours: EUR/European Pink



**LAMBSWOOL TOE PADS**  
Luxurious lambswool toe pads not only cushion your feet but keep them comfortable and snug as you dance.  
LWPAD Sizes: S, M, L



**FOAM RUBBER TOE PADS**  
Foam rubber toe pads designed to protect your feet. Cushioning your toes with protective foam to prevent any harm or injury.  
FRPAD Sizes: S, M, L



**BALLET KEYCHAIN**  
Content: Leather exclusive of trim.  
KCB1U Sizes: One Size  
Colours: LPK



**KNEE PADS**  
Protects knees from strenuous workouts.  
KP01 Size: S, M, L  
Colours: BLK/Black  
Content: Shell - 60% Polyester/25% Rubber/15% Nylon. Filling - 100% Polyester



**RUCANOR KNEE PADS**  
Pull on padded knee pads protect and support the knees whilst still offering full movement.  
RUCANOR Size: S, M, L  
Colours: BLK/Black  
Content: 52% Polyester/27% Hi-Density sponge/21% Elastic



**TELE TONE® TOE TAP**  
Aluminium toe taps designed for Capezio traditional character shoes and K360 oxfords. Taps, fibreboard, nails and screws included. Please refer to fitting guide for proper tap.  
1 pair per package.  
TTT Sizes: 1 (Large) - 5 (Small)  
Style: TTT1, TTT2, TTT3, TTT4, TTT5



**TELE TONE® HEEL TAP**  
Aluminium heel taps designed for Capezio leather sole oxford and larger heel character shoes. Taps, fibreboard, nails and screws included. Please refer to tap fitting guide for proper fit.  
1 pair per package.  
TTH Sizes: 1 (Large) - 6 (Small)  
Style: TTH1, TTH2, TTH3, TTH4, TTH5, TTH6



**DUO TONE™ HEEL TAP**  
Aluminium heel tap designed for Capezio traditional character shoes. Taps, fibreboard, nails and screws included. Please refer to tap fitting guide for the proper fit.  
1 pair per package.  
DT Sizes: 1 (Large) - 10 (Small)



**TELETONE XL TOE TAP**  
100% Aluminum toe tap. Taps, fibreboard, nails and screws included. Fits larger sizes 12 and up.  
1 pair per package.  
TTTX1 Sizes: One size



**TELETONE XL HEEL TAP**  
100% Aluminum heel tap. Taps, fibreboard, nails and screws included. Fits larger sizes 12 and up.  
1 pair per package.  
TTHX1 Sizes: One size



A woman with long brown hair in a high ponytail is shown from the back, wearing a magenta backless dress with crisscrossing straps. The background is a plain, light gray.

BUNHEADS®  
ACCESSORIES





#### OUCH POUCH®

Thin layer of gel material inside a fabric pouch. Cushioning covers the ball of foot, toes, and bunion areas. Deep cut vamp matches line of pointe shoe. Sleek shape hugs foot and keeps pad from sliding or bunching. Soft seams flatten on pointe. Best suited for narrow to medium, or tapered foot, or for the dancer who prefers more padding. Made in the USA. 1 pair per package.

**BH1054** Sizes: S (1-5)  
Colours: NUD/Nude  
Content: Gel/Polyester  
**BH1055** Sizes: L (6-10)  
Colours: NUD/Nude  
Content: Gel/Polyester



#### OUCH POUCH JR.®

Crescent-shaped pad with a thin layer of gel material inside a fabric pouch. Cushioning covers toe and bunion areas. Deep cut vamp hugs foot and keeps pads from sliding and bunching. Soft seams flatten on pointe. Best suited for wider foot or for the dancer who prefers a little less padding than the Ouch Pouch. Made in the USA. 1 pair per package.

**BH1094** Sizes: S (1-6)  
Colours: NUD/Nude  
Content: Gel/Polyester  
**BH1095** Sizes: L (7-10)  
Colours: NUD/Nude  
Content: Gel/Polyester



#### PRO PAD®

A layer of gel inside a fabric covered pouch cushions the tops and tips of the toes with no gel under the foot. Deep cut vamp. Sleek shape hugs foot and keeps pads from sliding and bunching. Most suitable for the dancer who prefers minimal padding or for wide feet. Made in the USA. 1 pair per package.

**BH1205** Sizes: S (1-5)  
Content: Gel/Polyester  
**BH1215** Sizes: L (6-10)  
Content: Gel/Polyester



#### ORIGINAL OUCH POUCH®

Thin layer of gel material inside a fabric pouch. Cushioning covers ball of foot and toes. Soft seams flatten on pointe. Made in the USA. 1 pair per package.  
**BH005** Sizes: One Size  
Content: Gel/Polyester



#### EXERCISE BANDS

Latex resistance bands help dancers of all levels to condition and strengthen. Excellent for preparation of pointe work. 1 band per package.

**BH511** Sizes: Medium Weight  
Colours: VIO/Violet  
Content: 100% Latex

**BH512** Sizes: Heavy Weight  
Colours: ROY/Royal Blue  
Content: 100% Latex

**BH513** Sizes: Super Heavy Weight  
Colours: CRN/Cranberry  
Content: 100% Latex



### TOE TAPE

Reduces friction and prevents chafing that causes blisters. 60 yards per roll. 1 per package. **BH370** Sizes: One Size Content: 100% Crepe w/ Adhesive



### ROCK ROSIN

Bulk or personal sized bagged rosin. Easy storage features zip closure. **BH408** Sizes: 4 oz. **BH409** Sizes: 12 oz. Content: Rosin



### SPUN SILVER™ LAMBSWOOL

Treated with SmartSilver™, a natural anti-microbial that guards against odour. Made in the USA. **BH400** Sizes: 1 oz. Colours: NAT/Natural Content: 100% Wool



### RAINBOW LAMBSWOOL

Beautiful top wool is colourfast and super soft. Lightly cushions toes. **BH401** Sizes: 1 oz. Colours: SOR/Sorbet Content: 100% Wool



### FOOTSIE ROLLER

Relieves tension under arches, helps smooth knots and soothes tired feet. 1 per package. **BH500** Sizes: One Size Content: Wood/Silicone



### BLOTTING PAPERS

All natural blotting papers remove excess oil. Sold in pre-packs of 6. **BH610** Sizes: One Size (50 sheets per pack) Content: Hemp/Flax



### STITCH KIT™

Contains 75 yards of super-strong thread, two large-eye needles and detailed sewing instructions. 1 per package. **BH350** Sizes: One Size Colours: PNK/Pink Content: 100% Nylon



### THERMA WRAP

**BH1503U** Sizes: One Size Colours: BLK/Black Content: 100% Nylon | Gel pack fabric content: 65% Polyester, 35% Cotton



### JELLY TOES

Elasticised fabric tube lined with gel strip on one side. Cut to size and place over any toe to help reduce pressure that causes blisters and corns. 2 per package. **BH1025** Sizes: One Size Content: Gel/Polyester



### THE BIG TIP®

Elasticised fabric tubes knitted to create perfectly seamless toe socks. Gel-coated inside alleviates pressure that causes bruised toenails. Effective on longer toes and for "building up" a toe so weight is more evenly distributed. 2 per package. **BH1051** Sizes: One Size Content: Gel/Polyester



### GEL KNEE PADS

Constructed of soft but sturdy bamboo knit fabric. Contoured silicone kneepads provide maximum pressure relief without bulk of common kneepads. Nude fabric. **BH1650** Sizes: S **BH1651** Sizes: L Content: Bamboo, Spandex, Gel



### GEL METATARSAL PADS

Metatarsal cushioning. Patterned gel surface grips the shoe without adhesive. Anti-microbial top cover absorbs and reduces odour. 2 per package. **BH1420** Sizes: One Size Content: Gel/Polyester





#### PACKAGED REHEARSAL RIBBON

$\frac{7}{8}$ "/2.22cm wide, single-faced satin ribbon measures 2  $\frac{1}{2}$  yards/228.6cm long. Enough ribbon for one pair of shoes. 6 per package.

**BH311LPP** Sizes: One Size  
Colours: LPP/Light Professional Pink  
Content: 100% Satin



#### RIBBON & ELASTIC PACK

Pre-packaged ribbon and elastic cut to length needed for a pair of pointe shoes. 2  $\frac{3}{4}$ " yards/251.5cm of  $\frac{7}{8}$ "/2.22cm ribbon and 18"/45.7cm of  $\frac{3}{4}$ "/1.9cm elastic per set. 1 set per package.

**BH315LPP** Sizes: One Size  
Colours: LPP/Light Professional Pink  
Content: Satin/Elastic



#### STRETCHING THE POINTE™

Mesh Elastic. 50cm per pack.

**BH317** Sizes: One Size  
Colours: LPP/Light Professional Pink  
Content: 50% Polyester, 50% Rubber



#### FLEXERS® REHEARSAL

$\frac{7}{8}$ "/2.22cm wide rehearsal ribbon designed to alleviate pressure that causes Tendinitis. Snug and secure ribbons stretch with movement of the ankle. 4 per package.

**BH310LPP** Sizes: One Size  
Colours: LPP/Light Professional Pink  
Content: Satin/Elastic



#### SMOOTHIES™

Gel nipple concealers offer a smooth look under leotards, costumes, and everyday clothing. Includes compact case for storage and travel. Washable, reusable and comfortable.

1 pair per package.  
**BH3671** Sizes: One Size  
Content: 100% Gel  
Colours: NUD



#### SPACEMAKERS™ II

Soft, gel toe separator with sleeve that can be placed between the first two toes. It aligns the big toe joint to aid in the treatment and prevention of bunions. This helps alleviate pressure and reduce inflammation of the bursa. The soft tubing slips over your toe to keep the spacemaker in place. 2 per package.

**BH1049** Sizes: One Size  
Colours: NAT/Natural  
Content: Gel, Polyester



#### SPACE PACK™

2 Spacers and 2 Spacemakers per package.

**BH1045** Sizes: One Size  
Content: 100% Gel



#### BUNION GUARD™

Bunion and toe spreader in one. Eases bunion pain and provides proper toe alignment. Reduces pressure on MP joint. Provides protection between Hallux toe and shoe. 2 per package.

**BH1048** Sizes: One Size  
Content: 100% Mineral Oil Gel



#### PINKY PAD™

Conical pad can be worn on any of the small toes. Helps provide relief from corns or blisters. 6 per package.

**BH1040** Sizes: One Size  
Content: 100% Polymer Gel



#### CLEARSTRETCH™ TIPS

Provides cushioning, protection and relief for corns, calluses, nails, hammer toes and other problem spots. Thin gel tips provide durable shield for sensitive toes. Unique comfort vent eliminates sweat. 2 per package.

**BH1450U** Sizes: SM  
**BH1451U** Sizes: ML  
**BH1452U** Sizes: LXL  
Content: 100% Gel



#### BUTTERFLY HAIR PIN

2 per package.

**BH4010** Sizes: One Size

Colours: SCL/Silver Clear

Content: 100% Metal, exclusive of decoration



#### DAISY HAIR PIN

2 per package.

**BH4014** Sizes: One Size

Colours: SCL/Silver Clear

Content: 100% Metal, exclusive of decoration



#### CROWN JEWEL HEADBAND

1 per package.

**BH4003** Sizes: One Size

Colours: SCL/Silver Clear

Content: 100% Metal, exclusive of decoration



#### SHOOTING STAR HEADBAND

1 per package.

**BH4004** Sizes: One Size

Colours: SCL/Silver Clear

Content: 100% Metal, exclusive of decoration



#### JEWELLED FLAMINGO CLIP

1 per package.

**BH4002** Sizes: One Size

Colours: SCL/Silver Clear

Content: 100% Metal, exclusive of decoration



#### BUN FROSTING HAIR COMB

1 per package.

**BH4007** Sizes: One Size

Colours: SCL/Silver Clear

Content: 100% Metal, exclusive of decoration



#### GLITTER GLAM BOBBY PINS

12 per package

(4 silver, 4 pink glitter, 4 dark pink glitter)

**BH4000** Sizes: One Size

Colours: SPN/Silver Pink

Content: 100% Metal, exclusive of decoration



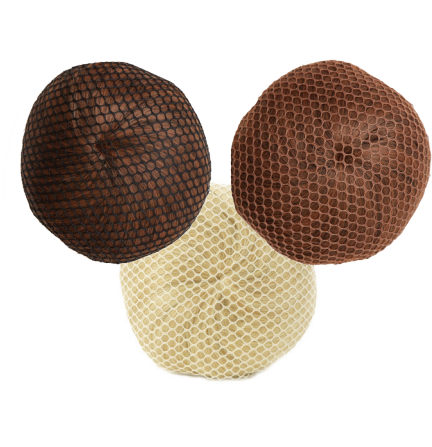
#### SPARKLE BOBBY PINS

2 per package.

**BH4001** Sizes: One Size

Colours: SCL/Silver Clear

Content: 100% Metal, exclusive of decoration



#### HAIR NET BUN COVER

1 per package.

**BH428** Sizes: One Size

Colours: BLK/Black, CGB/Champagne

Blonde, LBR/Light Brown

Content: 100% Nylon





**BOBBY PINS**  
Double coated.  
25 per package.

**BH446** Sizes: One Size  
Colours: Blonde (BLD)  
Content: Metal

**BH447** Sizes: One Size  
Colours: Light Brown (LBR)  
Content: Metal

**BH448** Sizes: One Size  
Colours: Dark Brown (DBR)  
Content: Metal

**BH449** Sizes: One Size  
Colours: Black (BLK)  
Content: Metal



**BUN BUILDER MINI**  
2 per package.

**BH1506U** Sizes: One Size  
Colours: BLD/Blonde, BLK/Black, BRN/Brown  
Content: 100% Nylon



#### HAIR NETS

Invisible hair nets keep hair looking neat and tidy.  
3 per package.

**BH420** Sizes: One Size  
Colours: BLD/Blonde  
Content: 100% Nylon

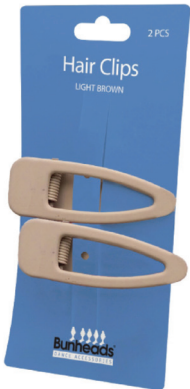
**BH421** Sizes: One Size,  
Colours: LBR/Light Brown  
Content: 100% Nylon

**BH422** Sizes: One Size  
Colours: MBR/Medium Brown  
Content: 100% Nylon

**BH423** Sizes: One Size,  
Colours: DBR/Dark Brown  
Content: 100% Nylon

**BH424** Sizes: One Size,  
Colours: BLK/Black  
Content: 100% Nylon

**BH425** Sizes: One Size,  
Colours: ABN/Auburn  
Content: 100% Nylon



**HAIR CLIPS**  
2 per package.

**BH1507U** Sizes: One Size  
Colours: BLD/Blonde, BLK/Black, DBR/Dark Brown, LBR/Light Brown  
Content: Metal



**HAIR TIES**  
Metal-free.  
4 per package.

**BH1505U** Sizes: One Size  
Colours: BLD/Blonde, BLK/Black, DBR/Dark Brown, LBR/Light Brown  
Content: Rubber with Nylon cover

#### HAIR PINS

Super heavyweight hairpins designed for dancers.  
12 per package.



**BH434** Sizes: 2"/5.08cm  
Colours: BLD/Blonde  
Content: Steel

**BH435** Sizes: 2"/5.08cm  
Colours: BRN/Brown  
Content: Steel

**BH436** Sizes: 2"/5.08cm  
Colours: BLK/Black  
Content: Steel

**BH437** Sizes: 2 1/2"/6.35cm  
Colours: BLD/Blonde  
Content: Steel

**BH438** Sizes: 2 1/2"/6.35cm  
Colours: BRN/Brown  
Content: Steel

**BH439** Sizes: 2 1/2"/6.35cm  
Colours: BLK/Black  
Content: Steel

**BH440** Sizes: 3"/7.62cm  
Colours: BLD/Blonde  
Content: Steel

**BH441** Sizes 3"/7.62cm  
Colours: BRN/Brown  
Content: Steel

**BH442** Sizes 3"/7.62cm  
Colours: BLK/Black  
Content: Steel



# BODYWEAR

WOMEN					
	Extra Small (XS)	Small (S)	Medium (M)	Large (L)	Extra Large (XL)
Bust	30 – 32 in	32 – 34 in	34 – 36 in	36 – 38 in	39 – 41 in
Waist	22 – 24 in	24 – 26 in	26 – 28 in	28 – 30 in	31 – 33 in
Hips	32 – 34 in	35 – 37 in	37 – 39 in	39 – 41 in	41 – 43 in
Girth	54 – 56 in	57 – 59 in	59 – 61 in	61 – 63 in	62 – 65 in
Size	2 – 4	4 – 6	8 – 10	10 – 12	14 – 16

CHILDREN						
	Tots (T)	Small (S)	Intermediate (I)	Medium (M)	Large (L)	(XL)
Chest	20 – 21 in	22 – 23 in	24 – 25 in	26 – 28 in	29 – 31 in	33 – 35 in
Waist	19 – 20 in	20 – 21 in	21 – 23 in	23 – 25 in	26 – 28 in	30 – 32 in
Hips	21 – 23 in	23 – 25 in	25 – 27 in	27 – 29 in	30 – 32 in	34 – 36 in
Girth	35 – 38 in	39 – 42 in	43 – 46 in	47 – 50 in	50 – 53 in	53 – 56 in
Size	2 – 4	4 – 5	6 – 6x	7 – 8	10 – 12	14 – 16

MEN							
	Boys Small (YM)	Boys (M)	Boys (L)	Small (S)	Medium (M)	Large (L)	Extra Large (XL)
Chest	26 – 28 in	28 – 30 in	30 – 32 in	34 – 36 in	36 – 38 in	38 – 40 in	40 – 42 in
Waist	23 – 24 in	25 – 26 in	26 – 28 in	28 – 30 in	30 – 32 in	32 – 34 in	34 – 36 in
Inseam	26	28	30	28	30	32	34

Size charts are for general fitting only and will vary according to individual products.

# FOOTWEAR

Adult's Size Standard Conversion Chart															
US	3	3.5	4	4.5	5	5.5	6	6.5	7	7.5	8	8.5	9	9.5	10
UK	1	1.5	2	2.5	3	3.5	4	4.5	5	5.5	6	6.5	7	7.5	8
EURO	33.5	34	34.5	35	35.5	36	36.5	37	38	38.5	39	40	40.5	41	42

US	10.5	11	11.5	12	12.5	13	13.5	14
UK	8.5	9	9.5	10	10.5	11	11.5	12
EURO	42.5	43	43.5	44	45	45.5	46	47

Children's Size Standard Conversion Chart															
US	5	5.5	6	6.5	7	7.5	8	8.5	9	9.5	10	10.5	11	11.5	12
UK	4.5	5	5.5	6	6.5	7	7.5	8	8.5	9	9.5	10	10.5	11	11.5
EURO	21	22	22.5	23	23.5	24	25	25.5	26	27	27.5	28	29	29.5	30

US	12.5	13	13.5	1	1.5	2	2.5	3
UK	12	12.5	13	13.5	1	1.5	2	2.5
EURO	30.5	31	32	32.5	33	34	34.5	35

Daisy Size Conversion Chart															
US	6X	6.5X	7X	7.5X	8T	8.5T	9T	9.5T	10C	10.5C	11C	11.5C	12C	12.5C	13C
UK	5.5	6	6.5	7	8	9	9.5	10	10.5	11	11.5	11.5	12	12.5	12.5
EURO	22.5	23.5	24	25	26	27	27.5	28	28.5	29	29.5	30	30.5	31	31.5

US	13.5C	1C	1.5C	2C	2.5C	3B	3.5B	4B	4.5B	5B	5.5B	6B	6.5B	7B	7.5B
UK	13	13.5	1	1.5	2	2	2.5	2.5	3	3.5	4	4.5	5	5.5	6
EURO	32	32.5	33	33.5	34	34.5	35	35.5	36	36.5	37	37.5	38	38	39

US	8B	8.5B	9B	9.5B	10B
UK	6.5	7	7.5	8	8.5
EURO	39.5	40	40.5	41	41.5

Men's Dancesport Shoes				
US	EUROPE	UK	HEEL TYPE	
			STANDARD	CUBAN
6	38	5	24.9	24.6
6.5	38.5	5.5	25.3	25.0
7	39	6	25.7	25.4
7.5	40	6.5	26.1	25.9
8	40.5	7	26.6	26.3
8.5	41	7.5	27.0	26.7
9	42	8	27.4	27.1
9.5	42.5	8.5	27.8	27.5
10	43	9	28.2	27.9
10.5	44	9.5	28.6	28.3
11	44.5	10	29.1	28.8
11.5	45	10.5	29.5	29.2
12	46	11	29.9	29.6
12.5	46.5	11.5	30.4	30.0
13	47	12	30.8	30.5
13.5	48	12.5	31.2	30.9
14	48.5	13	31.6	31.3

Women's Dancesport Shoes				
US	EUROPE	UK	SMOOTH & BALLROOM	LATIN SANDALS
5	35	2.5	23.6	21.9
5.5	35.5	3	24.0	22.3
6	36	3.5	24.4	22.8
6.5	37	4	24.9	23.2
7	37.5	4.5	25.3	23.6
7.5	38	5	25.7	24.0
8	39	5.5	26.1	24.4
8.5	39.5	6	26.5	24.8
9	40	6.5	26.9	25.3
9.5	41	7	27.4	25.7
10	41.5	7.5	27.8	26.1

\*Measurements for men's & women's dancesport shoes are in centimetres.

ADULT					
	Petite	Small	Medium	Large	X-Large
FootUndeez™	UK 2-3	UK 4-5	UK 6-7	UK 8-9	UK 10-11

\*Half sizes or extreme feet go up to next size.

Use the Standard / Daisy conversion chart for all styles with the exception of styles listed below

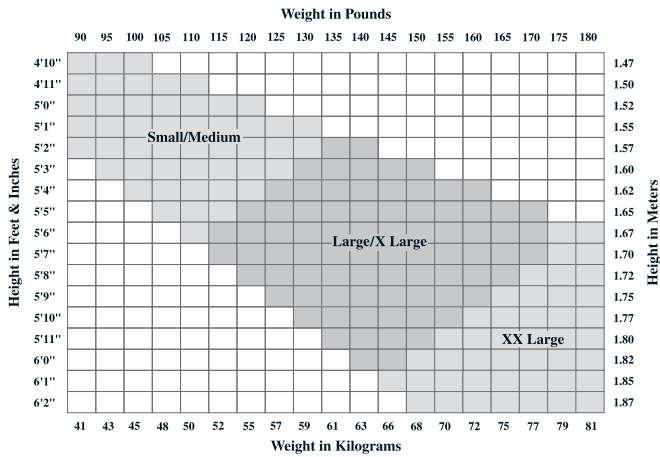
102/102MS	Glissé/Glissé MS	+ 3 Sizes from EUR/UK
129/129MS	Bella/Bella MS	+ 3 Sizes from EUR/UK
176	Contempora™	EUR/UK = US
191	Aerial™	EUR/UK = US
197	Plié II	+ 3 Sizes from EUR/UK
443C/443B	Tic Tap Toe	EUR/UK = US
446	Overture Oxford	+ 1 Size from EUR/UK
457C	Academy Character 1"	EUR/UK = US
601W	Rebel	+ 3 Sizes from EUR/UK
1116/1118	Demi Pointe	+ 3 Sizes from EUR/UK
1121/1122	Studio Pointe	+ 3 Sizes from EUR/UK
1126W/1127W/1128W/1129W	Cambré	+ 3 Sizes from EUR/UK
1130/1131/1132/1133/1134/1135	Airess	+ 3 Sizes from EUR/UK
1136W/1137W	Développé	+ 3 Sizes from EUR/UK
1142W	Ava	+ 3 Sizes from EUR/UK
2022M	Mr James Whiteside	EUR/UK = US
2030C	Canvas Cobra	+ 2 Sizes from EUR/UK
2037C	Hanami	+ 2 Sizes from EUR/UK
2037W	Hanami	+ 2.5 – 3 Sizes from EUR/UK
2039	Pro Canvas Ballet	+ 3 Sizes from EUR/UK
BR02	Standard Oxford	+ 1 Size from EUR/UK
CG06	Split Sole Tap	+ 1.5 Sizes from EUR/UK
CG26	Full Sole Jazz	+ 3 Sizes from EUR/UK
CP05	Show Stopper	+ 2.5 Sizes from EUR/UK
CP05C	Show Stopper	+ 1.5 Sizes from EUR/UK
DS19C	Web Dansneaker®	+ 2 Sizes from EUR/UK
DS33/DS33A	Spira Dansneaker®	+ 3 Sizes from EUR/UK
DS34	Battle Boot	+ 3 Sizes from EUR/UK
EM1	Agility Gym	+ 2 Sizes from EUR/UK
EM1C	Agility Gym	EUR/UK = US
FREE1/FREE2	Freedom	S (UK 3 – 4) M (UK 5 – 6) L (UK 7 – 8)
H062	Leather Pirouette II	S (UK 4 – 5.5) M (UK 6 – 7.5) L (UK 8 – 9.5)
H15	Scrunch Bootie	S (UK 4 – 5) M (UK 6 – 7) L (UK 8 – 9)
K543	Capezio® Classic Tap	+ 2.5 Sizes from EUR/UK
U625T/U625C	Pu Jr Tyette™	EUR/UK = US
U825C	Canvas Jr Tyette™	EUR/UK = US
U925T/U925C	Pu Jr Tyette™	EUR/UK = US



# TIGHTS

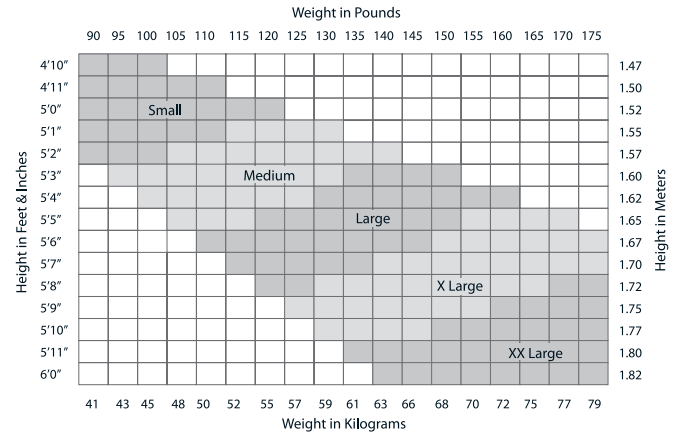
## WOMEN'S

- ULTRA SOFT™
- MESH
- MICROFIBRE
- PROFESSIONAL FISHNET
- STUDIO BASICS
- STUDIO BASICS FISHNET



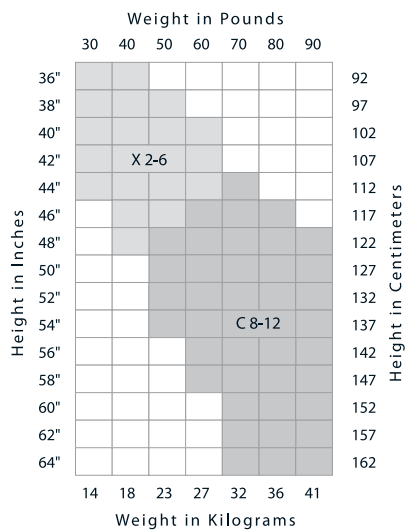
## WOMEN'S

- HOLD & STRETCH®
- ULTRA SHIMMERY



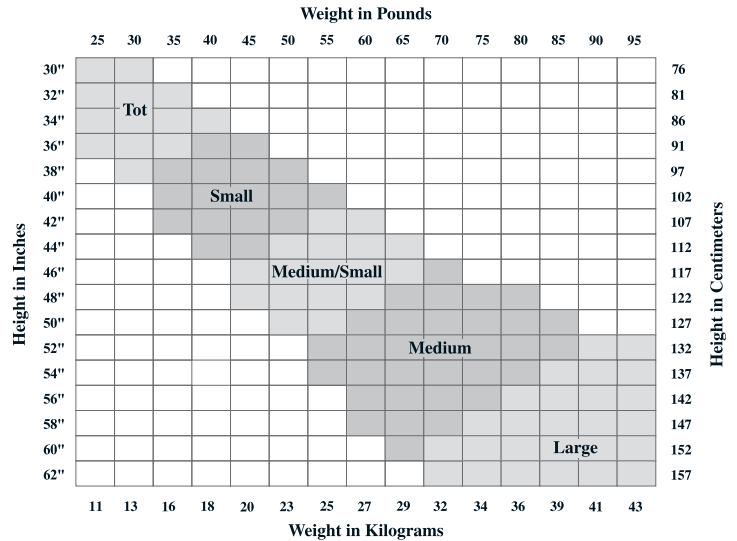
## CHILDREN'S

- ULTRA SOFT™
- STUDIO BASICS
- MESH
- STUDIO BASICS FISHNET

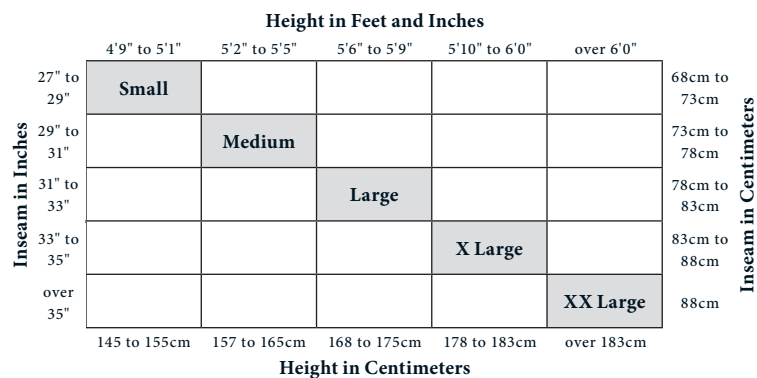


## CHILDREN'S

- HOLD & STRETCH®
- ULTRA SHIMMERY



## MEN'S



Size charts are for general fitting only and will vary according to tight products.

# IMPORTANT INFORMATION

## How to Order by Phone

Capezio Europe: +44 (0) 370 350 0073

Before placing an order over the telephone, it is important that you have your account number ready for the customer service representative. You will receive an automated email order confirmation (this is not an indication of stock availability).

## How to Order by Fax

Capezio Europe: +44 (0) 370 350 0074

Fax your order to the Customer Service Department. All orders must be legible and complete with your account number, ship to and bill to address, date and authorised signature. Orders should state Capezio style number, colour, quantity and purchase order number if applicable.

## How to Order by Email

Email your order to [eusales@capezio.com](mailto:eusales@capezio.com), with the subject line 'Orders'. Please include your account number in your email.

## Packing Information

Tights (packs of 3) - Any order placed for less than an indicated packing quantity will be increased to the designated packing quantities. The customer shall be responsible for any additional cost.

## In-Stock Service

It is our policy to ship your in-stock merchandise within 48 hours of receiving your order (\*subject to credit approval).

## Customer Service

Our Customer Service Representatives are here to assist you:

- Mon – Fri 8:45am – 5:15pm UK time
- Customer Service: +44 (0) 370 350 0073

Look for announcements extending Customer Service hours during peak periods.

You can place your orders, obtain product and shipping information, adjust open orders, request return authorisations and product delivery information.

## Backorders/Open orders

Unless otherwise specified, your backorders will be consolidated with other open orders. Any backorders older than 3 months will automatically be cancelled (Excluding Swings and Seasonals). Backorders will not be kept for pro-forma customers. Any cancellation requests must be made in writing.

## Invoicing

Invoices are sent direct via e-billing. Hard copies or additional invoice copies requested will be charged at a fee of £1/€1 per invoice.

## Credit and Returns - Phone, Mail or Fax

Goods will not be accepted for return without prior authorisation. A return authorisation can be obtained by contacting the Customer Service Department and quoting your account number, the style number, colour, size and quantity returning and the reason for the return. For defective items, please indicate the nature of the defect.

All returned merchandise must be accompanied by a return authorisation form. Return authorisations are valid for 4 weeks from the issue date.

Requests to return items reportedly shipped in error must be made within 7 days of the invoice date. The request must specify the order and invoice numbers and must also include style number, colour, size and quantity of the items ordered and of the items received.

For defective merchandise: After carefully inspecting the merchandise at your store, if you find a defective item you should request a return authorisation.

All defective returns will be inspected by our Returns Department for excessive wear or misuse and credit is subject to approval. Worn merchandise returned and found to not be defective but presenting evidence of excessive wear and tear will be denied credit and merchandise will be retained by Capezio unless otherwise requested by the customer on the return authorisation form. Any return of rejected items will be at customer's expense.

Customer returns due to a customer ordering error or items no longer required are subject to a 20% restocking fee.

Any authorised returns which contain price tags, stickers or other identification affixed by the customer or without original packaging will not be accepted for return (excludes defective items).

Non authorised returns will not be considered for credit or exchange and merchandise will be held for customer collection for a maximum of 4 weeks.

## Footwear Sizing

Please note, footwear sizes are displayed in Capezio sizes. For conversions please see fitting guides at the back of the catalogue and price list.

## UK VAT

For footwear styles with a suffix of C, X, or T, UK VAT will be charged at zero rate. For all other style code suffixes, UK VAT liability will be determined by the size guidelines in HMRC VAT Notice 714.

## Terms & Conditions

Full Terms & Conditions available on request.

Capezio retains the right to change terms and conditions without prior notice. Style and colour availability are subject to change throughout the year.









CAPEZIOEUROPE.COM

**CAPEZIO**  
95 WHIFFLER ROAD  
NORWICH, NORFOLK  
NR3 2AW  
T: +44 (0)370 350 0073

**CAPEZIO LONDON**  
33 ENDELL ST  
LONDON  
WC2H 9BA  
T: +44 (0)20 7379 6042